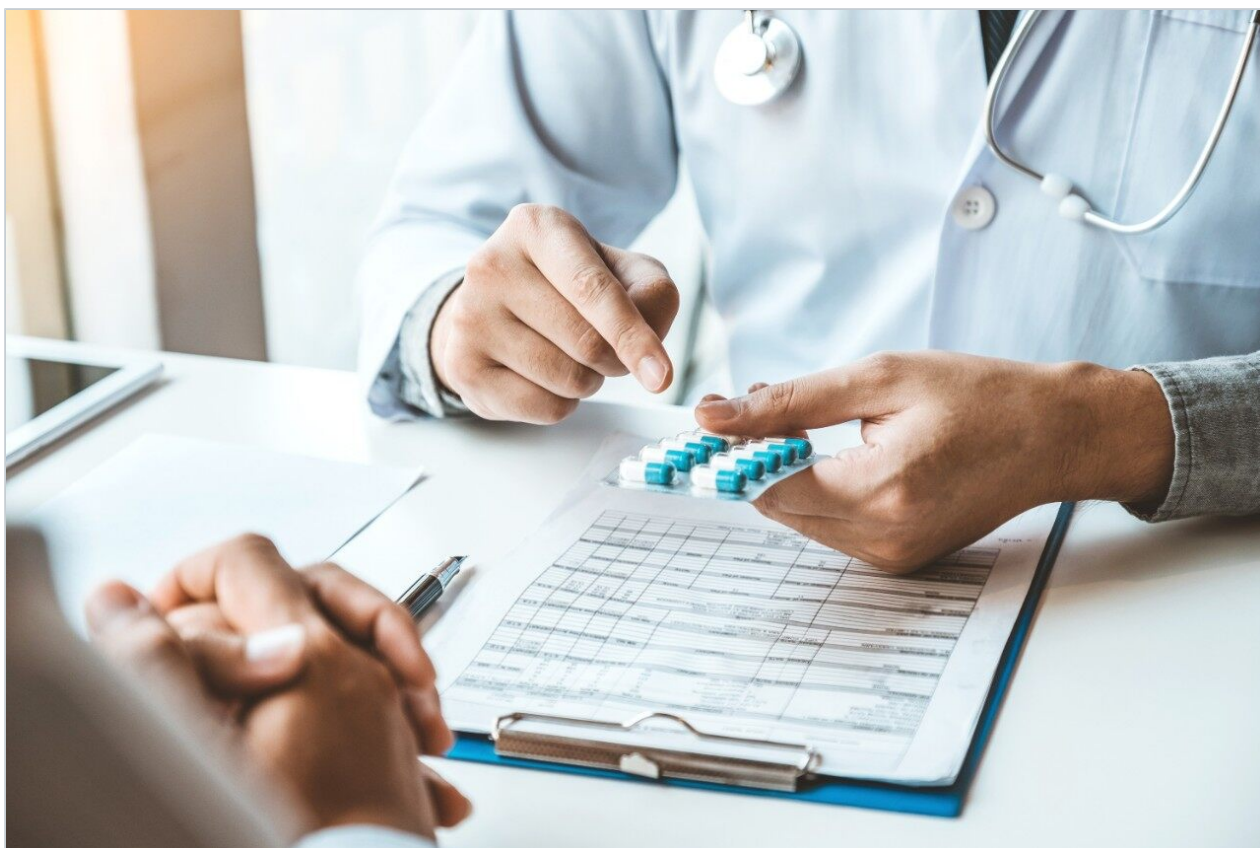


응용 자료

## Tricyclic Antidepressants - Symmetry C18 Column

---

Waters Corporation



This is an Application Brief and does not contain a detailed Experimental section.

---

### Abstract

This application brief demonstrates analysis of tricyclic antidepressants.

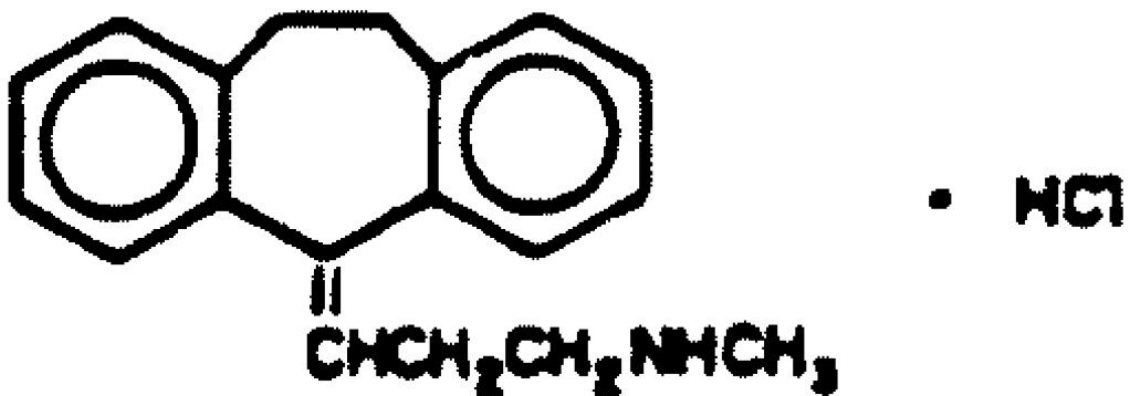
---

## Introduction

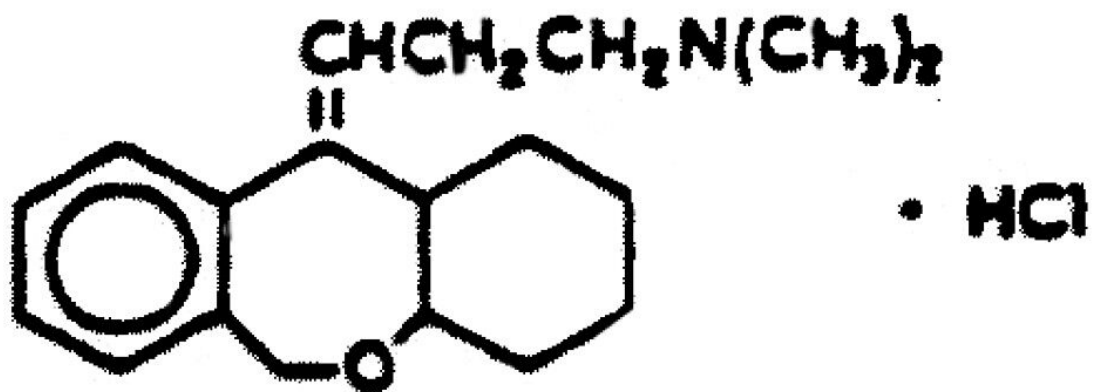
The compounds used in this study are –



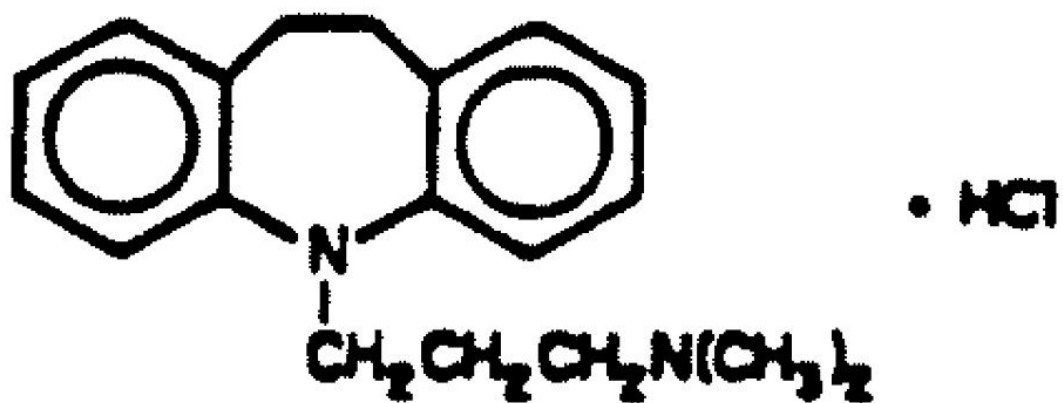
## 1. Protriptyline HCl



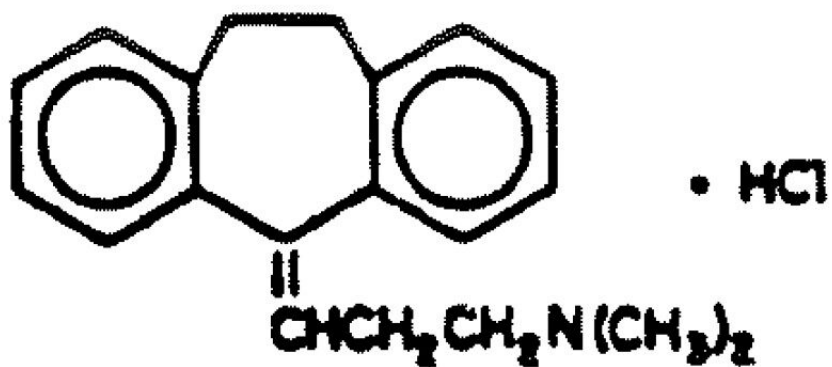
## 2. Nortriptyline HCl



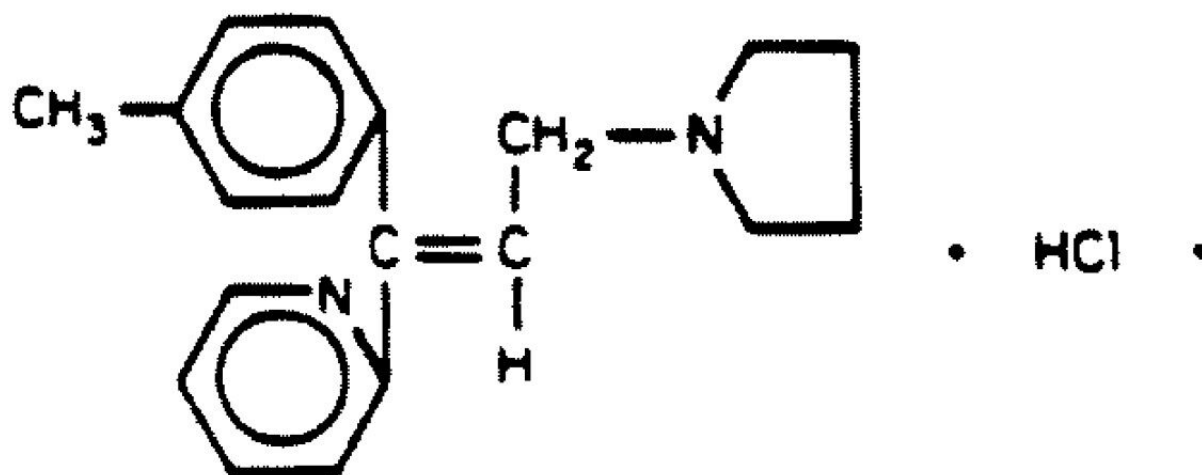
### 3. Doxepin HCl



### 4. Imipramine HCl



## 5. Amitriptyline HCl



## 6. Trimipramine

---

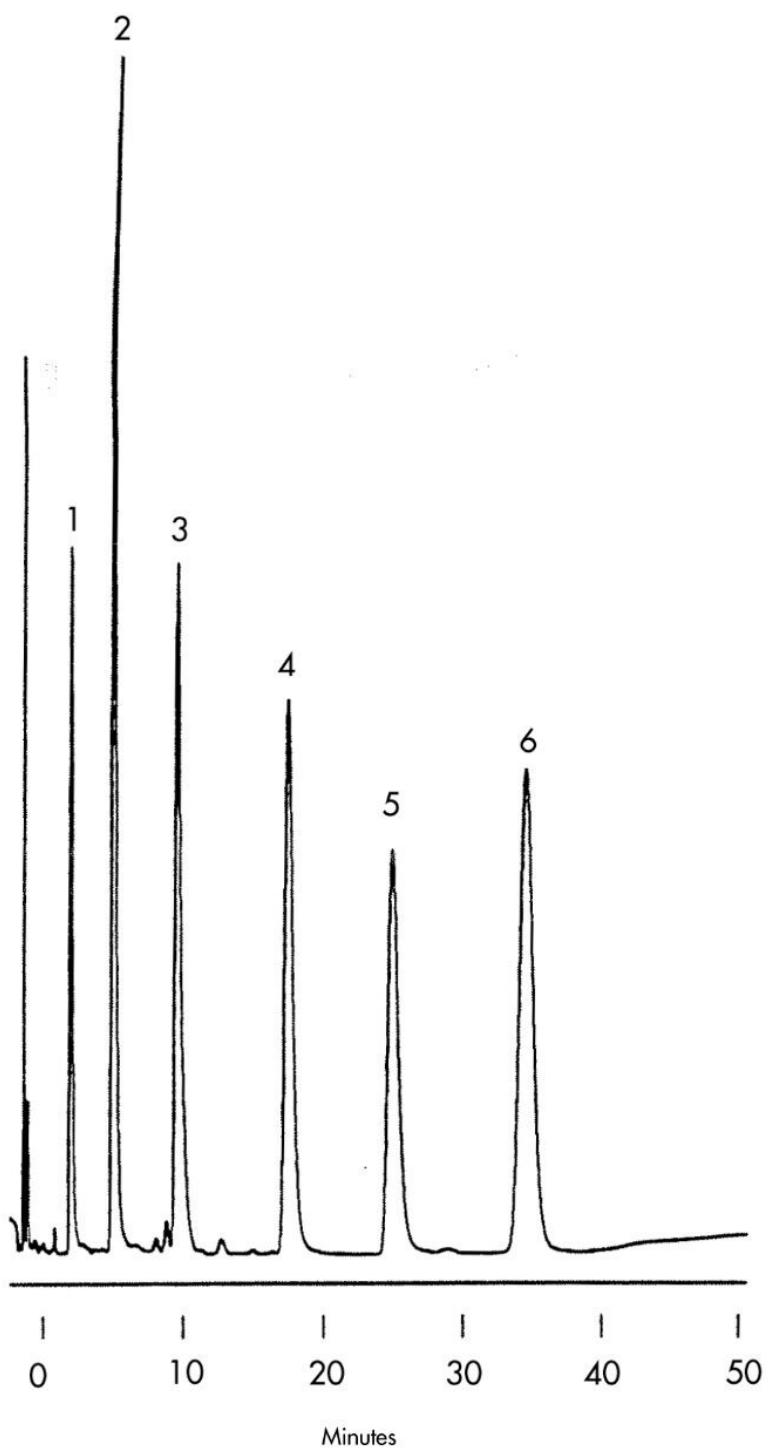
Experimental

HPLC Method

Column:	Symmetry C <sub>18</sub> , 3.9 x 150 mm, 5 μm
Part numbers:	WAT046980
Mobile phase:	20 mM potassium phosphate, pH 7/methanol 35:65
Flow rate:	1.0 mL/min
Injection volume:	20 μL of 100 μg/mL sample
Detection:	UV @ 254 nm

---

## Results and Discussion



---

Featured Products

WA31763.173, June 2003

© 2021 Waters Corporation. All Rights Reserved.