

Albuterol (Salbutamol)

Waters Corporation



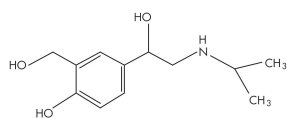
This is an Application Brief and does not contain a detailed Experimental section.

Abstract

This application brief highlights the analysis of Albuterol using Symmetry columns.

Introduction

Albuterol has been studied in this application brief.



1. Salbutamol

Experimental

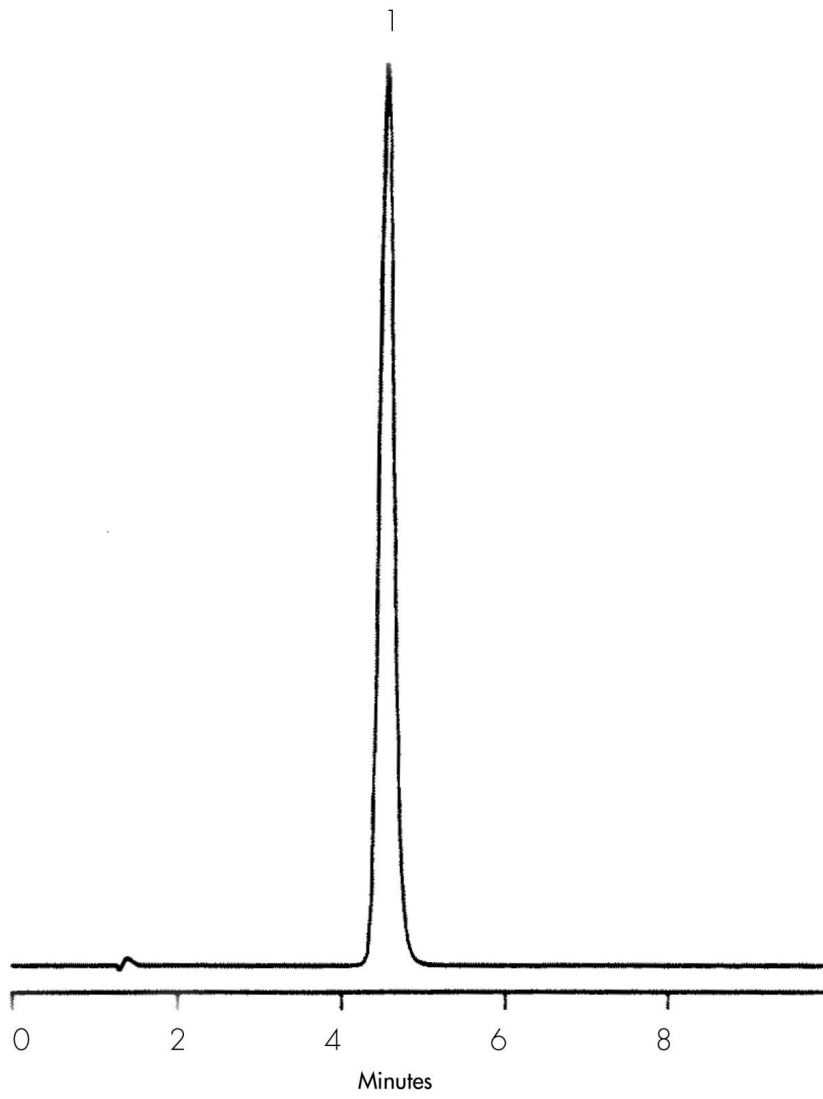
HPLC Method

Column:	Symmetry C ₁₈ , 3.9 x 150 mm, 5 μm (p/n: WAT046980)
Mobile phase:	Water/methanol/glacial acetic acid 69:30:1 with 5 mM sodium 1-hexanesulfonate
Flow rate:	1.0 mL/min
Injection volume:	10 μL of 200 μg/mL salbutamol
Detection:	UV @ 276 nm

USP Tailing Factors

1. 1.2

Results and Discussion



Featured Products

WA31763.18, June 2003



© 2021 Waters Corporation. All Rights Reserved.