

Nota de aplicación

## Amphetamines in Human Urine

---

Waters Corporation

This is an Application Brief and does not contain a detailed Experimental section.

---

### Abstract

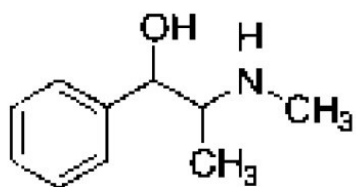
This application brief details on the analysis of amphetamines in human urine using Symmetry Columns.

---

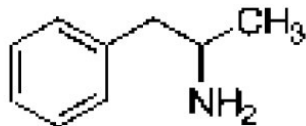
### Introduction

The compounds analyzed in this study are:

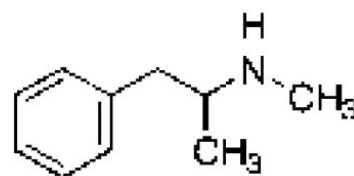
1. Ephedrine
  2. Amphetamine
  3. Methamphetamine
-



**1. Ephedrine (I.S.)**



**2. Amphetamine**



**3. Methamphetamine**

---

## Experimental

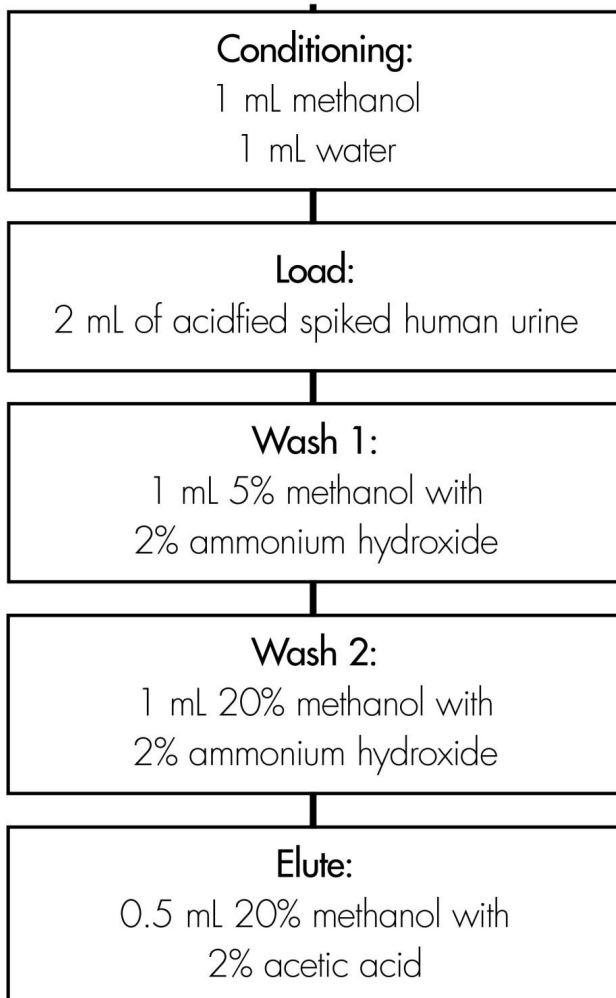
### HPLC Method

Column:	Symmetry Shield RP <sub>18</sub> , 3.9 x 150 mm, 5 µm
Guard column:	Symmetry Guard Column, 3.9 x 20 mm, 5 µm
Part numbers:	Column - 186000108, Guard - 186000107
Mobile phase:	0.1% TFA in Water/Acetonitrile 90:10
Flow rate:	1.0 mL/min
Injection volume:	50 µL
Temperature:	30° C
Detection:	UV @ 214 nm (0.14 AUFS)

# Oasis® HLB Extraction Method

Oasis® HLB Extraction Plate, 30 mg/96-well

Part Number WAT058951

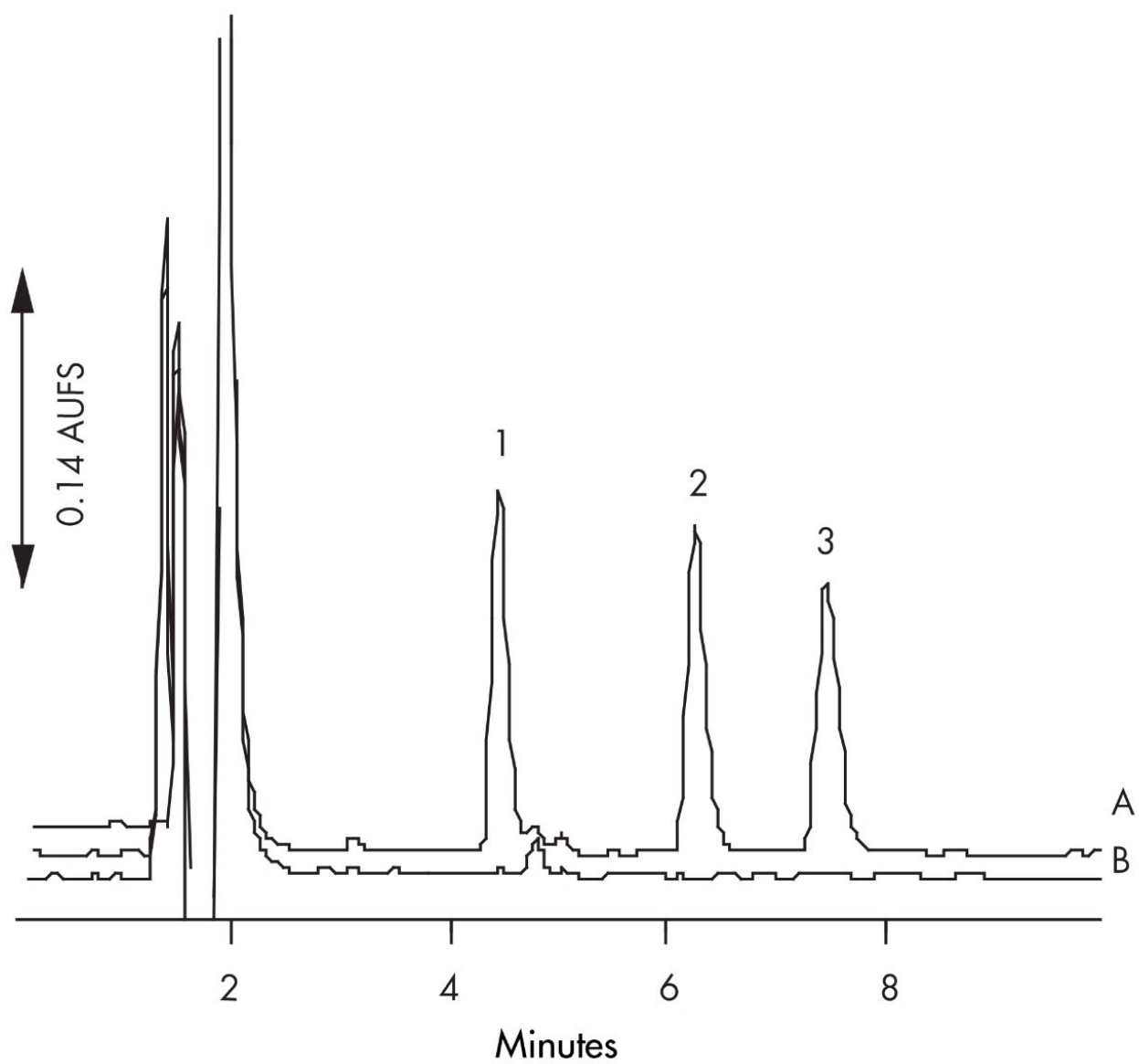


---

## Results and Discussion

---

<b>Spike Levels</b>	<b>%Recovery 0.7 µg/mL</b>	<b>%RSD 3.5 µg/mL</b>
Amphetamine (n=8)	99.3 (4.9)	104.7 (1.8)
Methamphetamine (n=8)	105.5 (5.8)	100.9 (4.4)
Amphetamine Interday (n=16)		102.8 (2.7)
Amphetamine Interperson (n=16)	98.8 (6.2)	101.8 (3.3)
Methamphetamine Interday (n=16)		98.5 (5.4)
Methamphetamine Interperson (n=16)	96.4 (11.5)	99.4 (6.3)
Ephedrine (I.S.) (n=8)		89.5 (1.4)



*Chromatogram of A) Spiked Urine, B) Blank Urine.*

## Featured Products

WA31763.27, June 2003

© 2022 Waters Corporation. All Rights Reserved.