

Note d'application

## Captopril

---

Waters Corporation



This is an Application Brief and does not contain a detailed Experimental section.

---

### Abstract

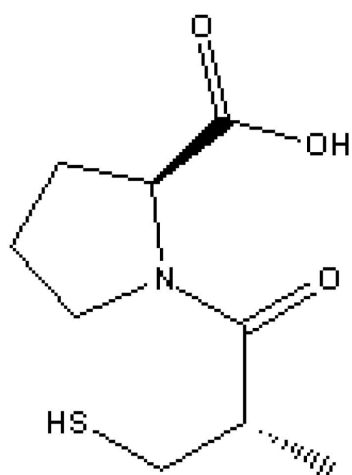
This application brief demonstrates analysis of captopril.

---

## Introduction

The compound analyzed in this study is captopril.

Compounds	USP Tailing Factors
Captopril	1.0
Captopril Disulfide	1.2



### 1. Captopril

---

## Experimental

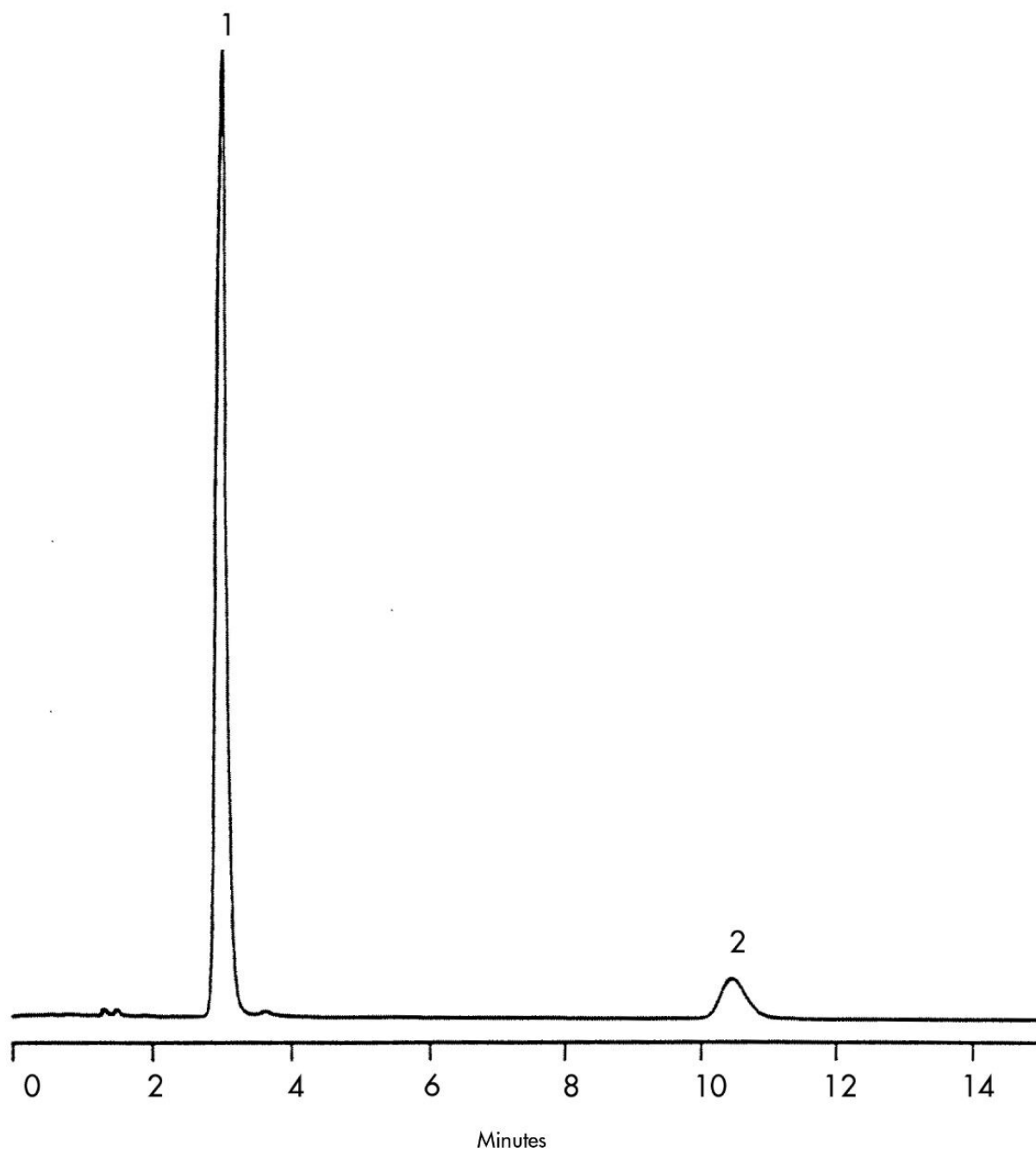
### HPLC Method

Column: Symmetry C<sub>18</sub>, 3.9 x 150 mm, 5 μm

Part number:	WAT046980
Mobile phase:	0.1% phosphoric acid in water/methanol 60:40
Flow rate:	1.0 mL/min
Injection volume:	10 $\mu$ L of 200 $\mu$ g/mL captopril and 20 $\mu$ g/mL of captopril disulfide
Temperature:	40 $^{\circ}$ C
Detection:	UV @ 220 nm

---

## Results and Discussion



---

## Featured Products

WA31763.46, June 2003

© 2021 Waters Corporation. All Rights Reserved.