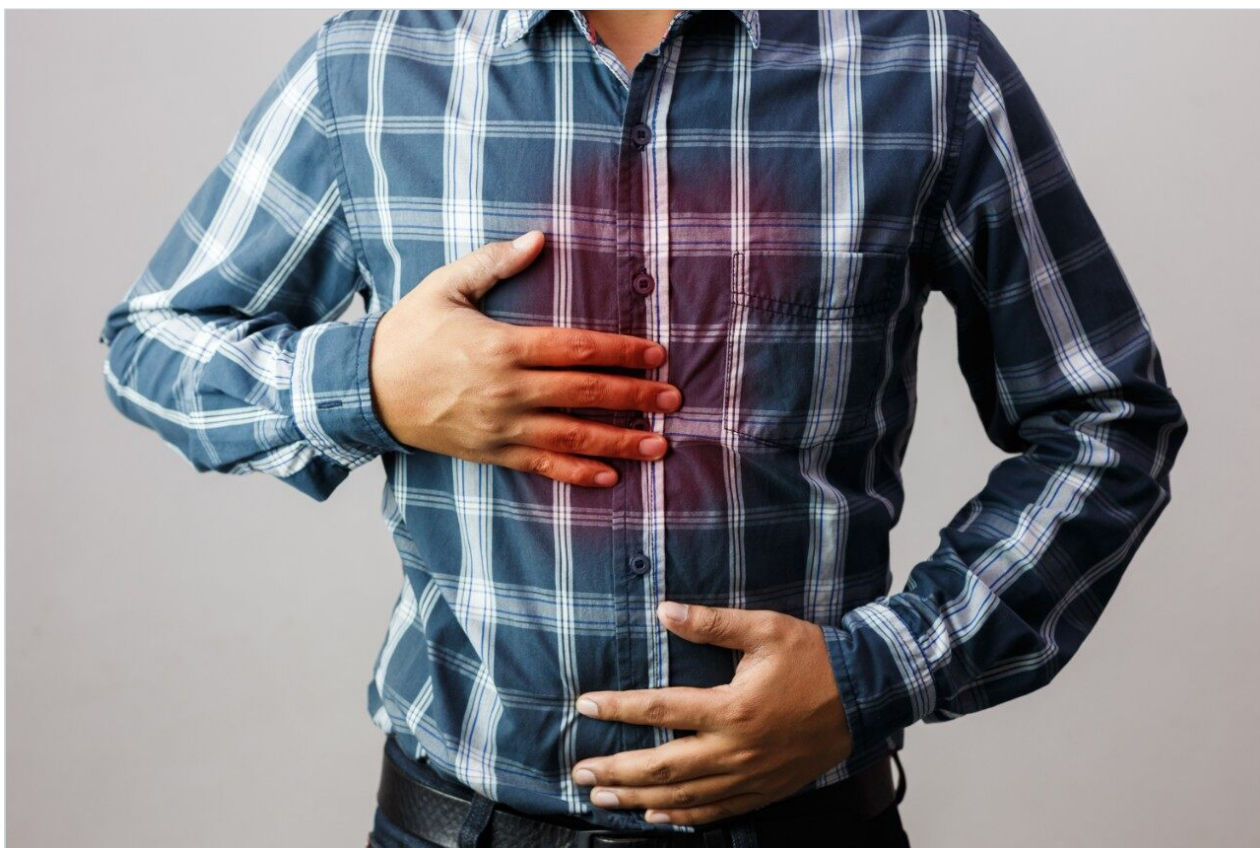


## Cimetidine – (Symmetry C<sub>18</sub>)

---

Waters Corporation



This is an Application Brief and does not contain a detailed Experimental section.

---

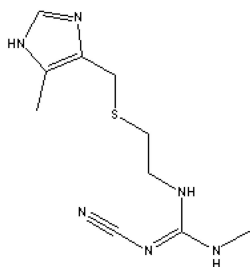
### Abstract

This application brief highlights the analysis of cimetidine using Symmetry C<sub>18</sub> columns.

---

# Introduction

Cimetidine has been analyzed in this application brief.



**1. Cimetidine**

---

# Experimental

## HPLC Method

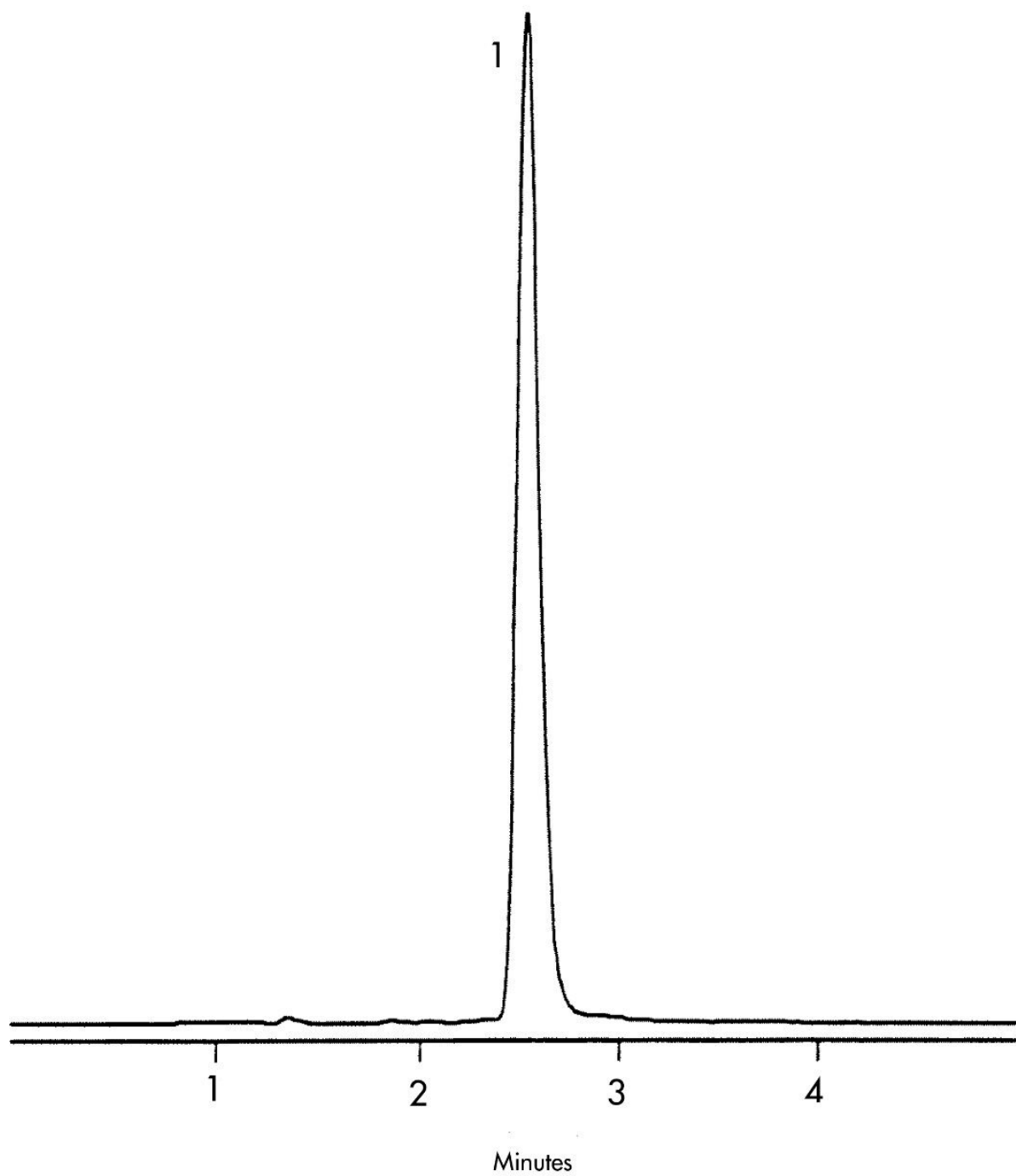
Column:	Symmetry C <sub>18</sub> , 3.9 x 150 mm, 5 μm (p/n: WAT046980)
Mobile phase:	0.03% Phosphoric acid in water/methanol 90:10
Flow rate:	1.0 mL/min
Injection volume:	10 μL injection of 10 μg/mL
Detection:	UV @ 220 nm

## USP Tailing Factors

1. 1.2

---

## Results and Discussion



---

## Featured Products

Alliance HPLC <<https://www.waters.com/514248>>

WA31763.58, June 2003

© 2021 Waters Corporation. All Rights Reserved.