

Cimetidine – (Symmetry C₁₈)

Waters Corporation



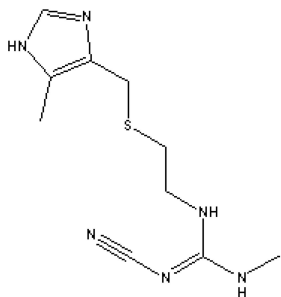
This is an Application Brief and does not contain a detailed Experimental section.

Abstract

This application brief highlights the analysis of cimetidine using Symmetry C₁₈ columns.

Introduction

Cimetidine has been analyzed in this application brief.



1. Cimetidine

Experimental

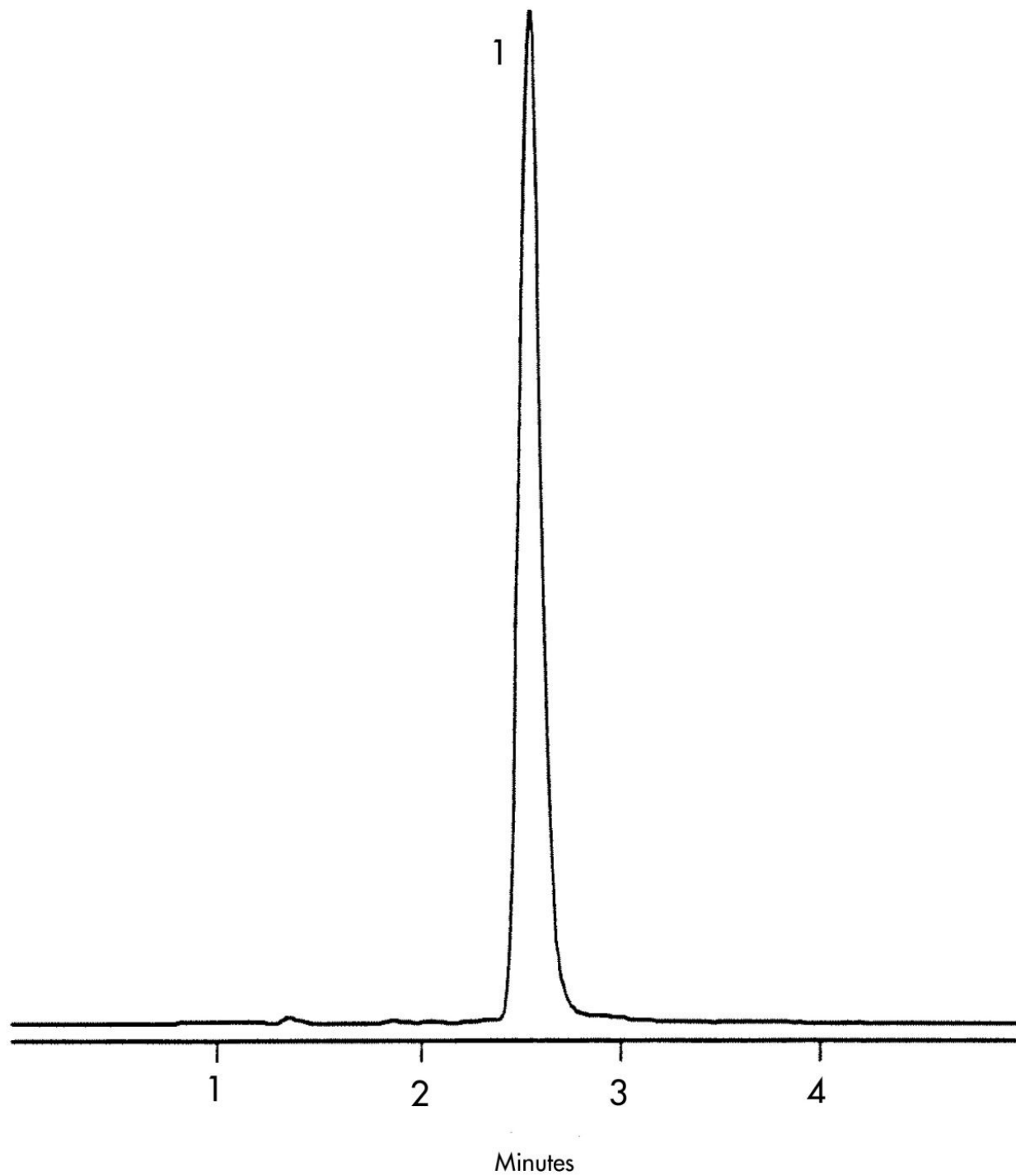
HPLC Method

Column:	Symmetry C ₁₈ , 3.9 x 150 mm, 5 μm (p/n: WAT046980)
Mobile phase:	0.03% Phosphoric acid in water/methanol 90:10
Flow rate:	1.0 mL/min
Injection volume:	10 μL injection of 10 μg/mL
Detection:	UV @ 220 nm

USP Tailing Factors

1. 1.2

Results and Discussion



Featured Products

· [Alliance HPLC <https://www.waters.com/514248>](https://www.waters.com/514248)

WA31763.58, June 2003



© 2021 Waters Corporation. All Rights Reserved.