

응용 자료

Clobetasol and Related Compound

Waters Corporation



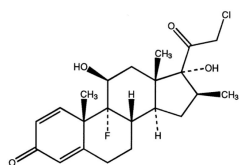
This is an Application Brief and does not contain a detailed Experimental section.

Abstract

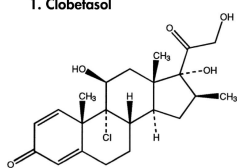
This application brief highlights the analysis of clobetasol using SymmetryShield RP₁₈ columns.

Introduction

Clobetasol is analyzed in this application brief.



1. Clobetasol



2. Beclomethasone

Experimental

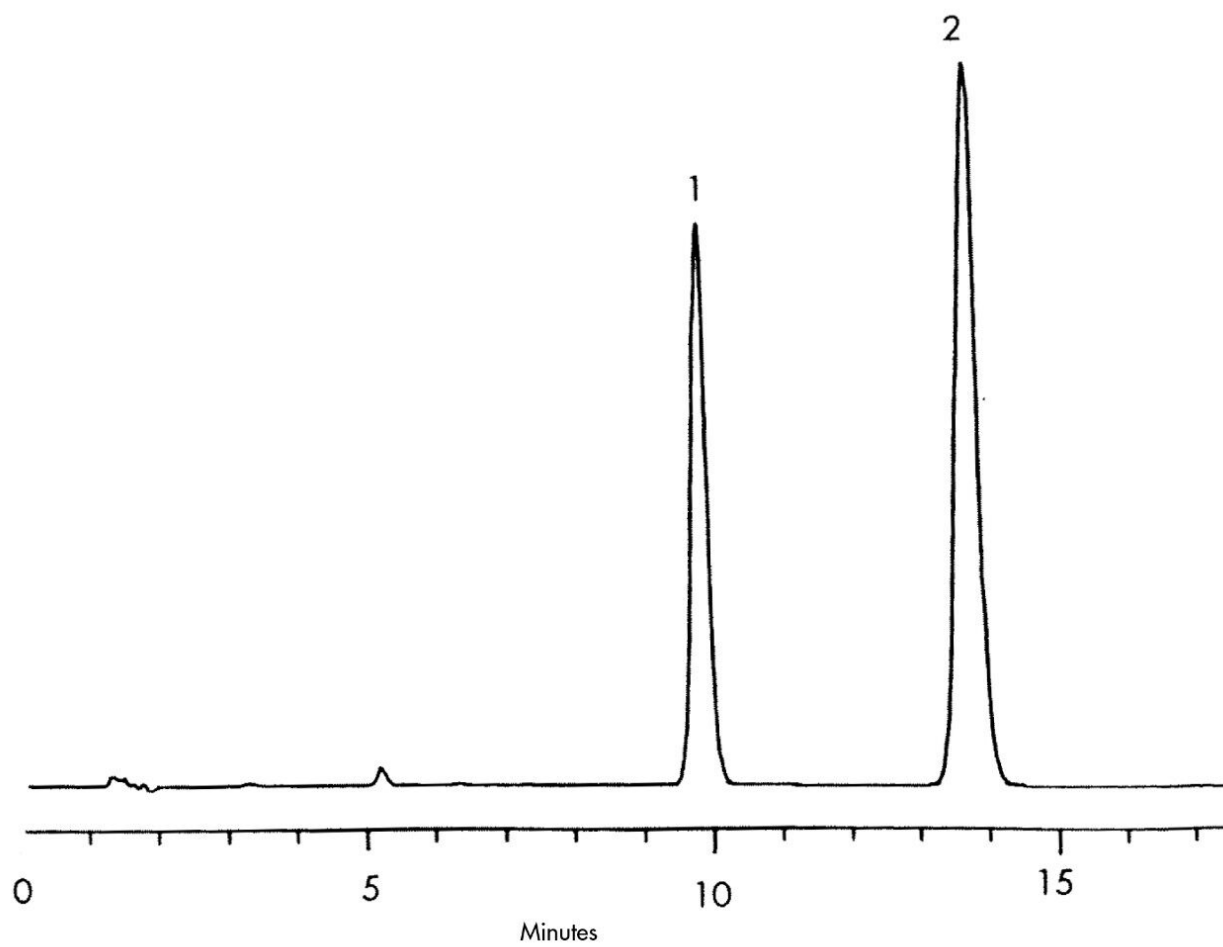
HPLC Method

Column:	SymmetryShield RP ₁₈ , 4.6 x 150 mm, 5 μm (p/n: 186000109)
Mobile phase:	Acetonitrile/water/methanol 48:42:10
Flow rate:	1.0 mL/min
Injection volume:	10 μL
Detection:	UV @ 240 nm

USP Tailing Factors

1. 1.07

Results and Discussion



Featured Products

© 2021 Waters Corporation. All Rights Reserved.