

Application Note

## Clobetasol and Related Compound

---

Waters Corporation



This is an Application Brief and does not contain a detailed Experimental section.

---

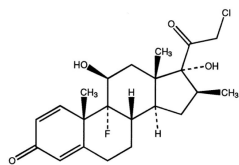
### Abstract

This application brief highlights the analysis of clobetasol using SymmetryShield RP<sub>18</sub> columns.

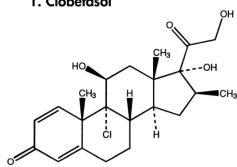
---

## Introduction

Clobetasol is analyzed in this application brief.



1. Clobetasol



2. Beclomethasone

---

## Experimental

### HPLC Method

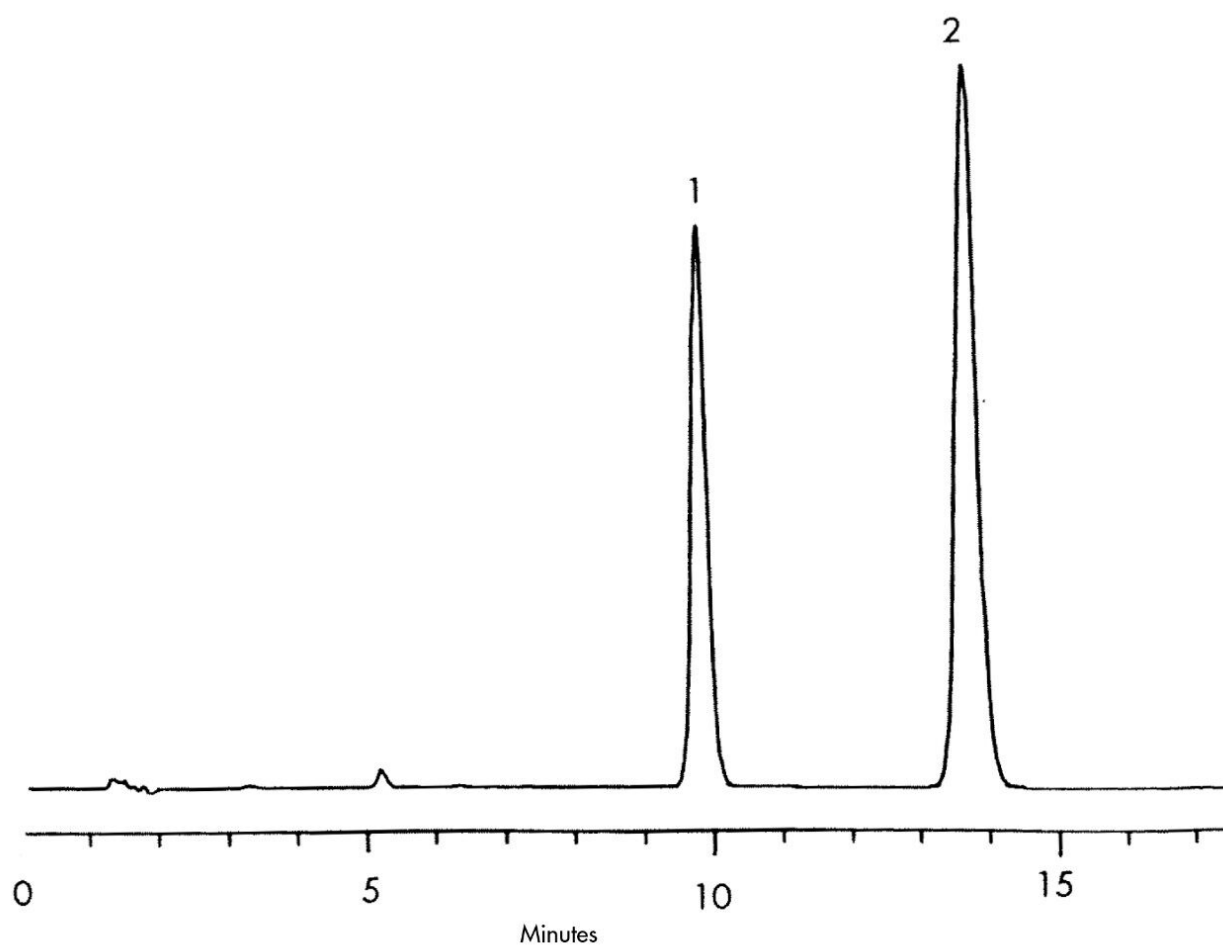
Column:	SymmetryShield RP <sub>18</sub> , 4.6 x 150 mm, 5 μm (p/n: 186000109)
Mobile phase:	Acetonitrile/water/methanol 48:42:10
Flow rate:	1.0 mL/min
Injection volume:	10 μL
Detection:	UV @ 240 nm

### USP Tailing Factors

1. 1.07

---

## Results and Discussion



---

## Featured Products

© 2021 Waters Corporation. All Rights Reserved.