

## Cyclizine and Chlorcyclizine

---

Waters Corporation

This is an Application Brief and does not contain a detailed Experimental section.

---

### Abstract

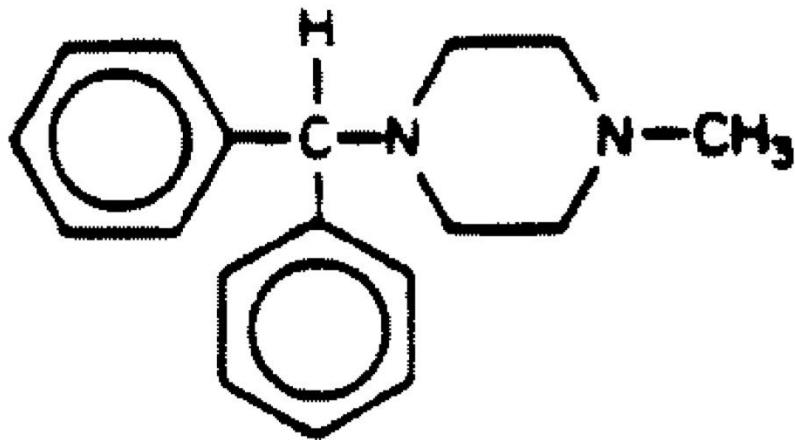
This application brief details on analysis of cyclizine and chlorcyclizine using Symmetry Columns.

---

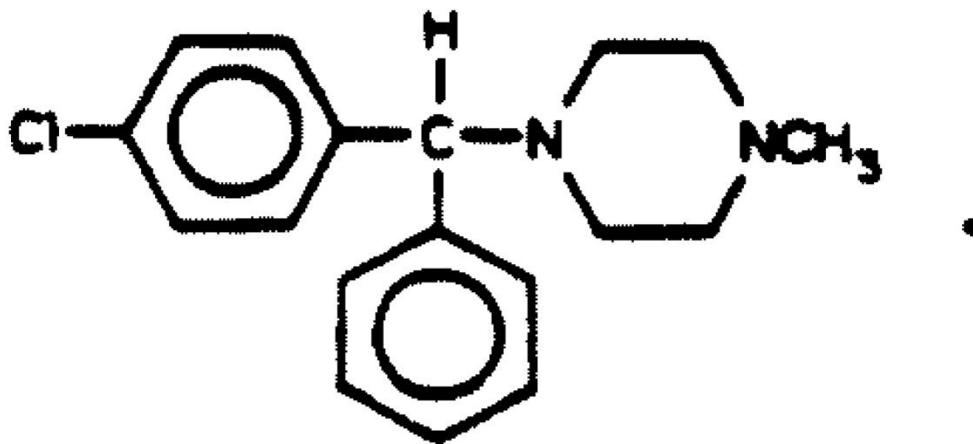
### Introduction

The compounds analyzed in this study are:

1. Cyclizine
2. Chlorcyclizine HCL



**1. Cyclizine**



**2. Chlorcyclizine HCL**

---

## Experimental

### HPLC Method

Column:	Symmetry C <sub>8</sub> , 3.9 x 150 mm, 5 μm
Guard column:	Symmetry Guard Column 3.9 x 20 mm, 5 μm
Part numbers:	Column - WAT046970, Guard - WAT054250
Mobile phase:	7.4 mM sodium 1-heptanesulfonate in water/acetonitrile 65:35
Flow rate:	1.0 mL/min
Injection volume:	8 μL of 100 μg/mL sample
Detection:	UV @ 230 nm

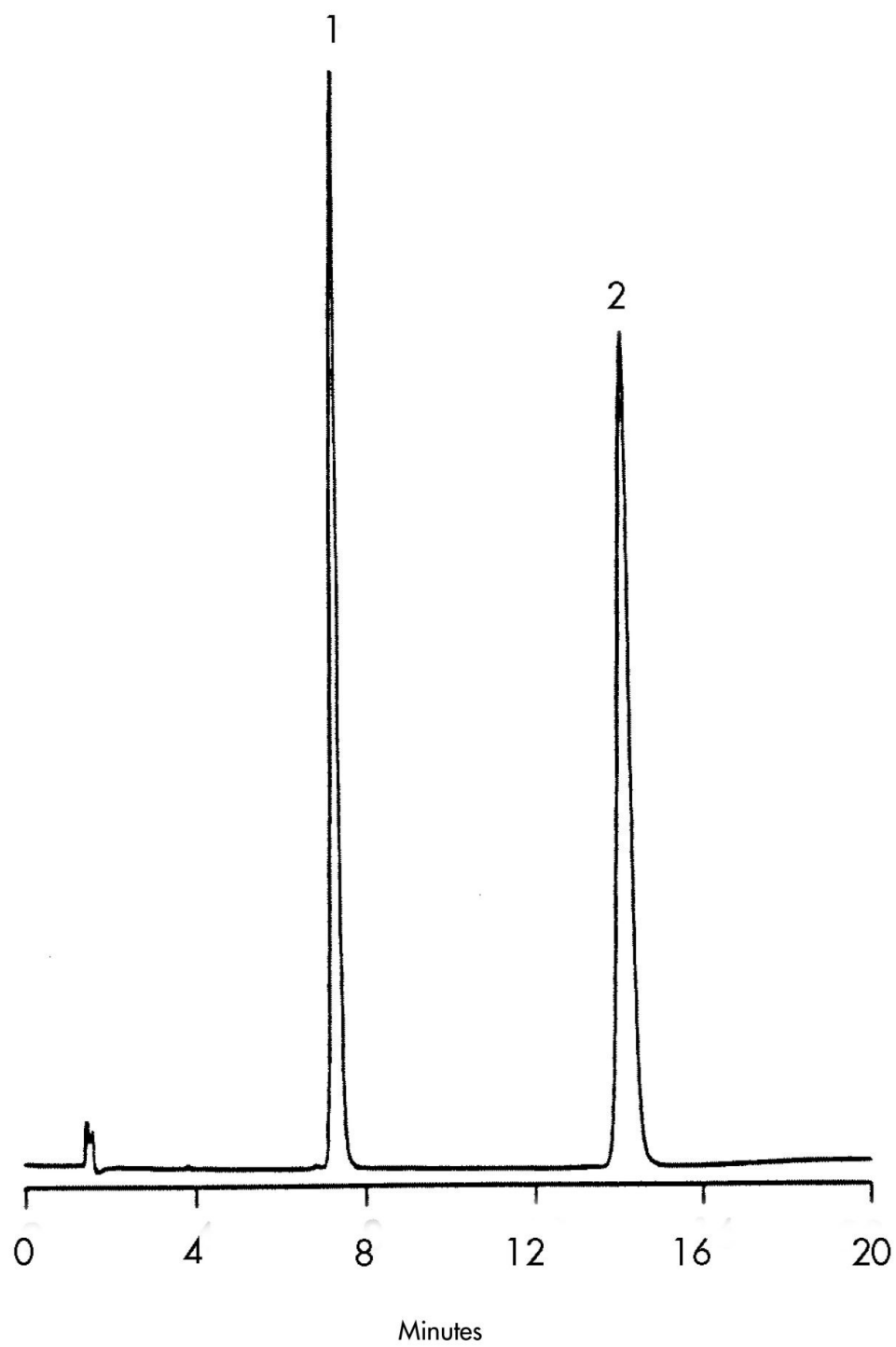
### USP Tailing Factors

1. 1.28

2. 1.28

---

## Results and Discussion



---

## Featured Products

WA31763.65, June 2003

© 2022 Waters Corporation. All Rights Reserved.