

Nota de aplicación

Cyclizine and Chlorcyclizine

Waters Corporation

This is an Application Brief and does not contain a detailed Experimental section.

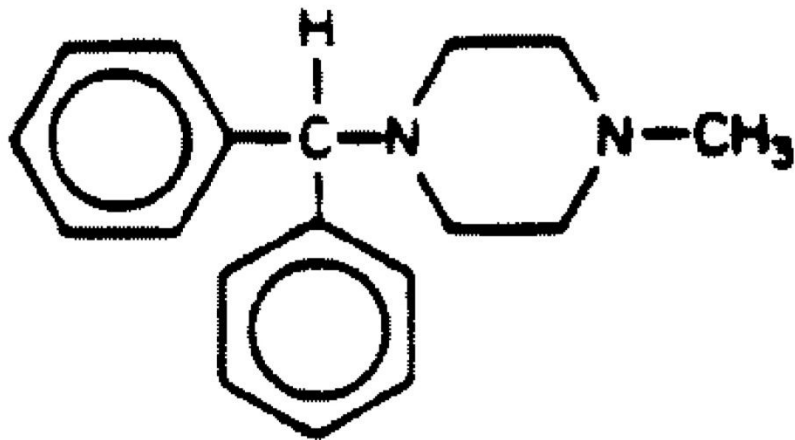
Abstract

This application brief details on analysis of cyclizine and chlorcyclizine using Symmetry Columns.

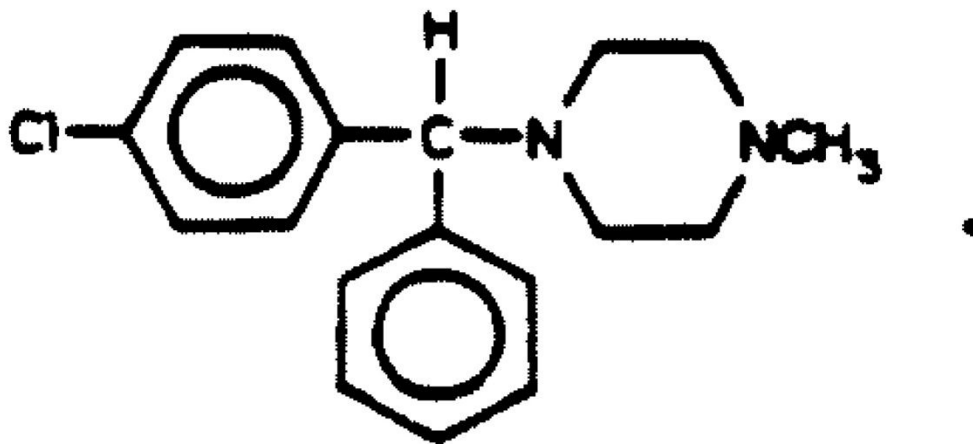
Introduction

The compounds analyzed in this study are:

1. Cyclizine
2. Chlorcyclizine HCL



1. Cyclizine



2. Chlorcyclizine HCL

Experimental

HPLC Method

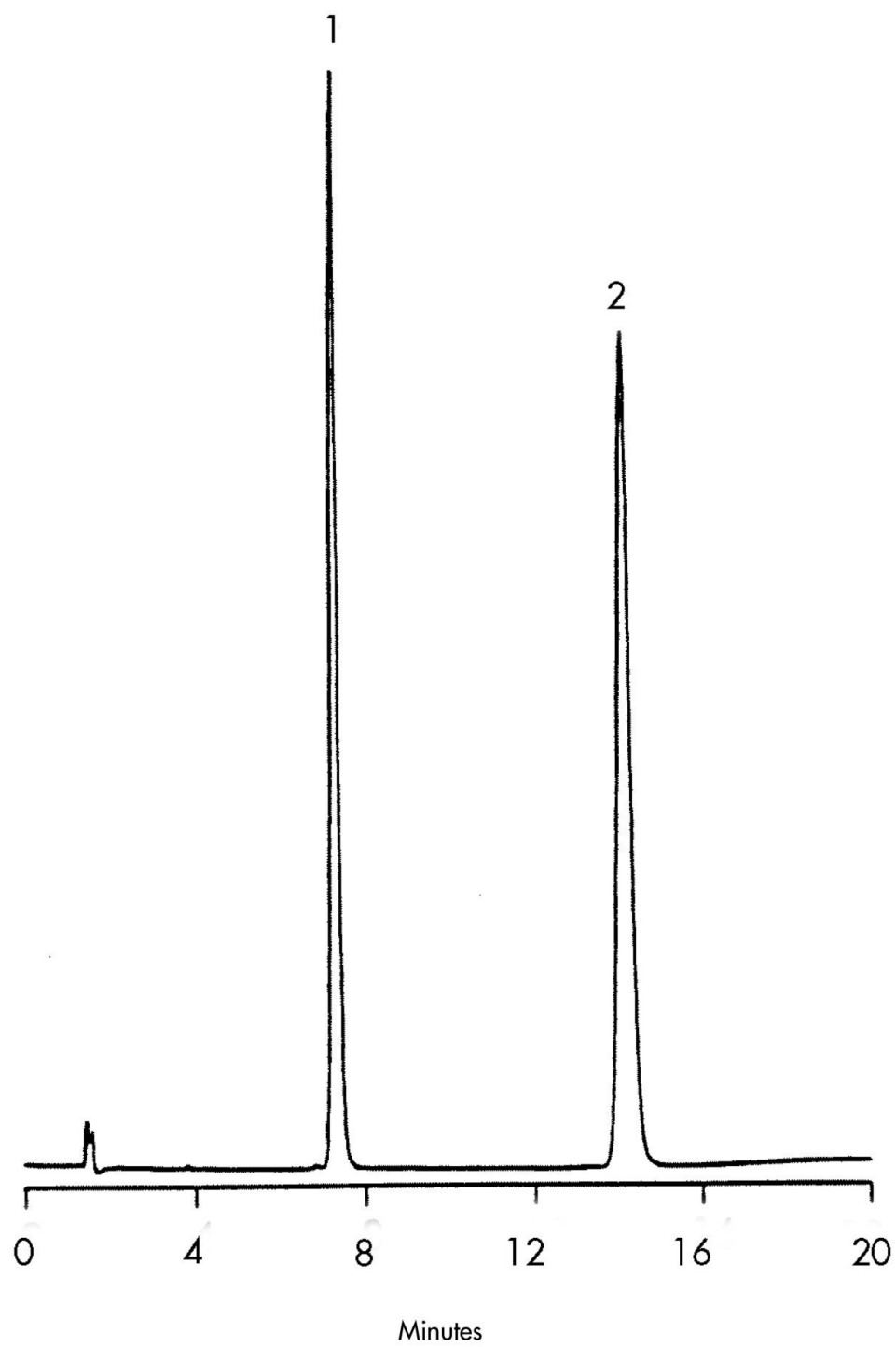
Column:	Symmetry C ₈ , 3.9 x 150 mm, 5 μm
Guard column:	Symmetry Guard Column 3.9 x 20 mm, 5 μm
Part numbers:	Column - WAT046970, Guard - WAT054250
Mobile phase:	7.4 mM sodium 1-heptanesulfonate in water/acetonitrile 65:35
Flow rate:	1.0 mL/min
Injection volume:	8 μL of 100 μg/mL sample
Detection:	UV @ 230 nm

USP Tailing Factors

1. 1.28

2. 1.28

Results and Discussion



Featured Products

WA31763.65, June 2003

© 2022 Waters Corporation. All Rights Reserved.