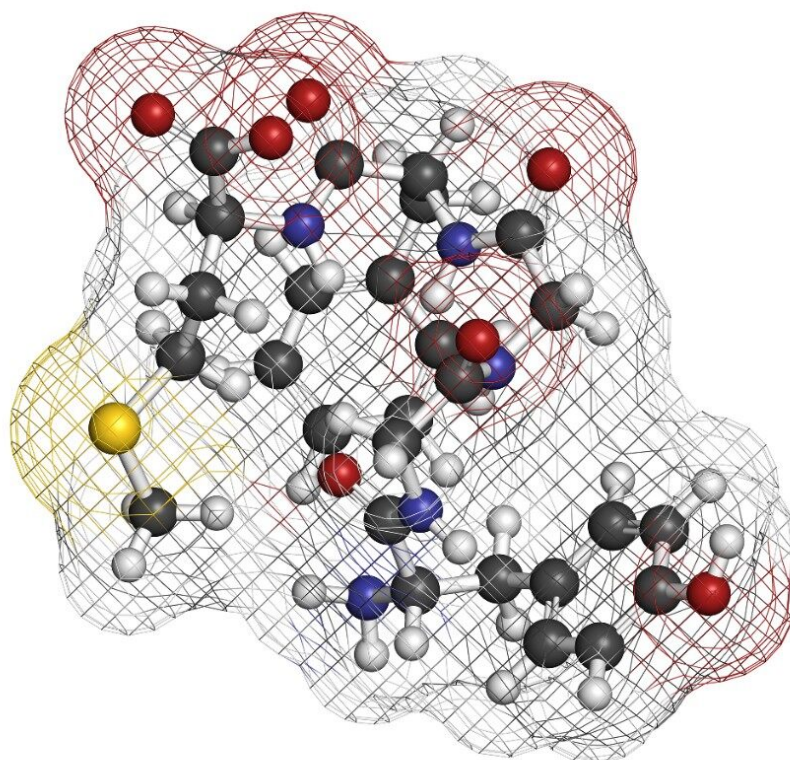


## Enkephalins

---

Waters Corporation



This is an Application Brief and does not contain a detailed Experimental section.

---

### Abstract

This application brief demonstrates analysis of enkephalins.

---

## Introduction

The peptides used in this study are –

Peptides	USP Tailing Factors
Met enkephalin: Tyr-Gly-Phe-Met	0.99
Leu enkephalin: Tyr-Gly-Gly-Phe-Leu	0.97

---

## Experimental

### HPLC Method

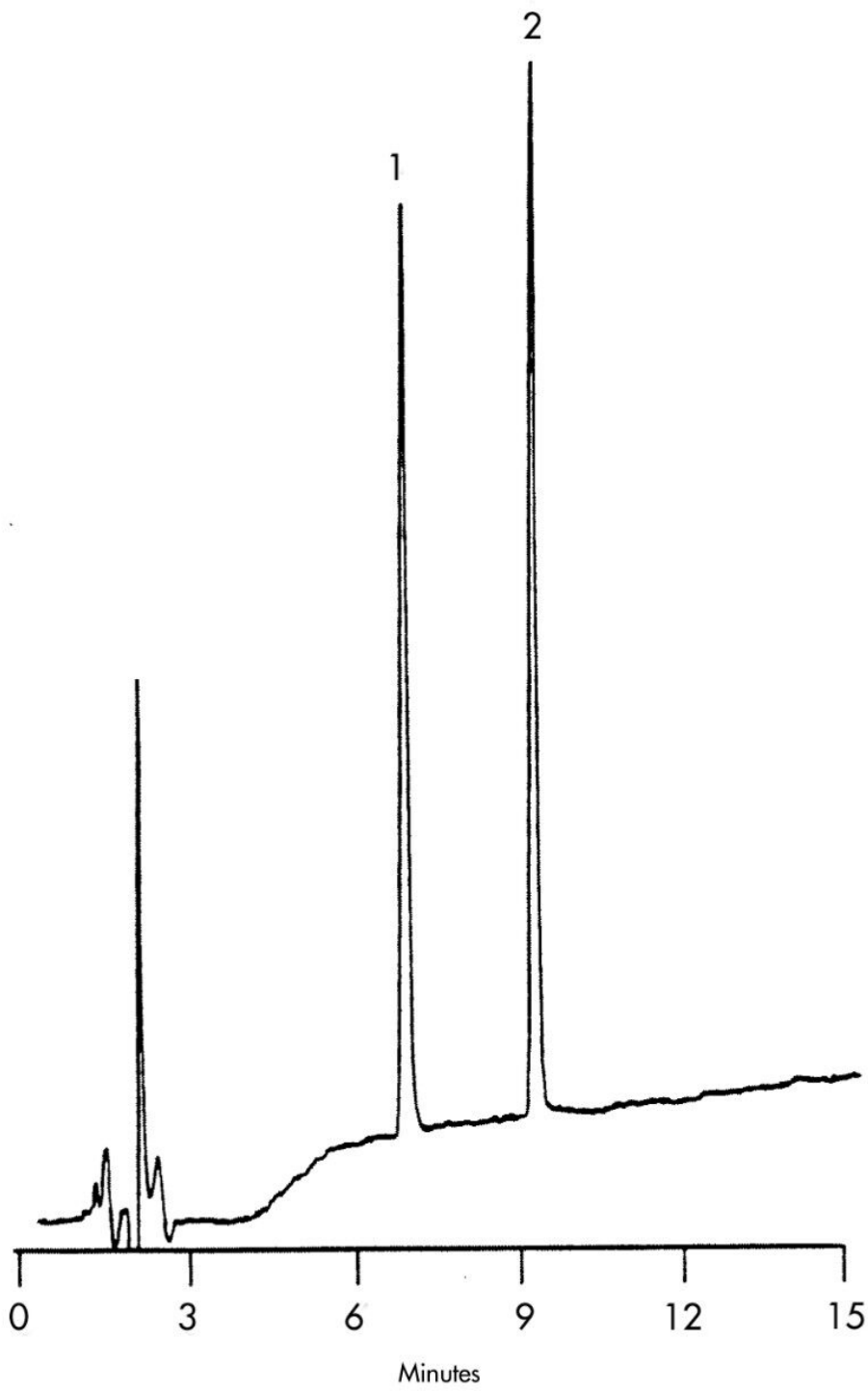
Column:	Symmetry C <sub>8</sub> , 3.9 x 150 mm, 5 μm
Guard column:	Sentry Guard Column 3.9 x 20 mm, 5 μm
Part numbers:	Column - WAT046970, Guard - WAT054250
Mobile phase A:	0.1% TFA
Mobile phase B:	0.1% TFA in acetonitrile/water 90:10
Flow rate:	1.0 mL/min
Injection volume:	5 μL of mixture with 500 μg/mL of each peptide
Detection:	UV @ 214 nm

## Gradient

Time (min)	Profile	
	%A	%B
0	80	20
30	40	60

---

## Results and Discussion



---

Featured Products

WA31763.82, June 2003

© 2021 Waters Corporation. All Rights Reserved.