

## Codeine and its Glucuronide Metabolite in Plasma

---

Waters Corporation

This is an Application Brief and does not contain a detailed Experimental section.

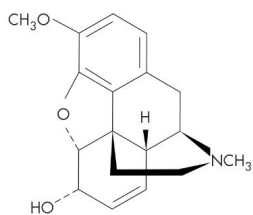
---

### Abstract

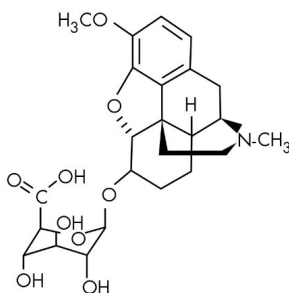
This application brief highlights on the analysis of codeine and its glucuronide metabolite in plasma.

---

### Introduction



CODEINE



CODEINE-6-GLUCURONIDE

---

## Experimental

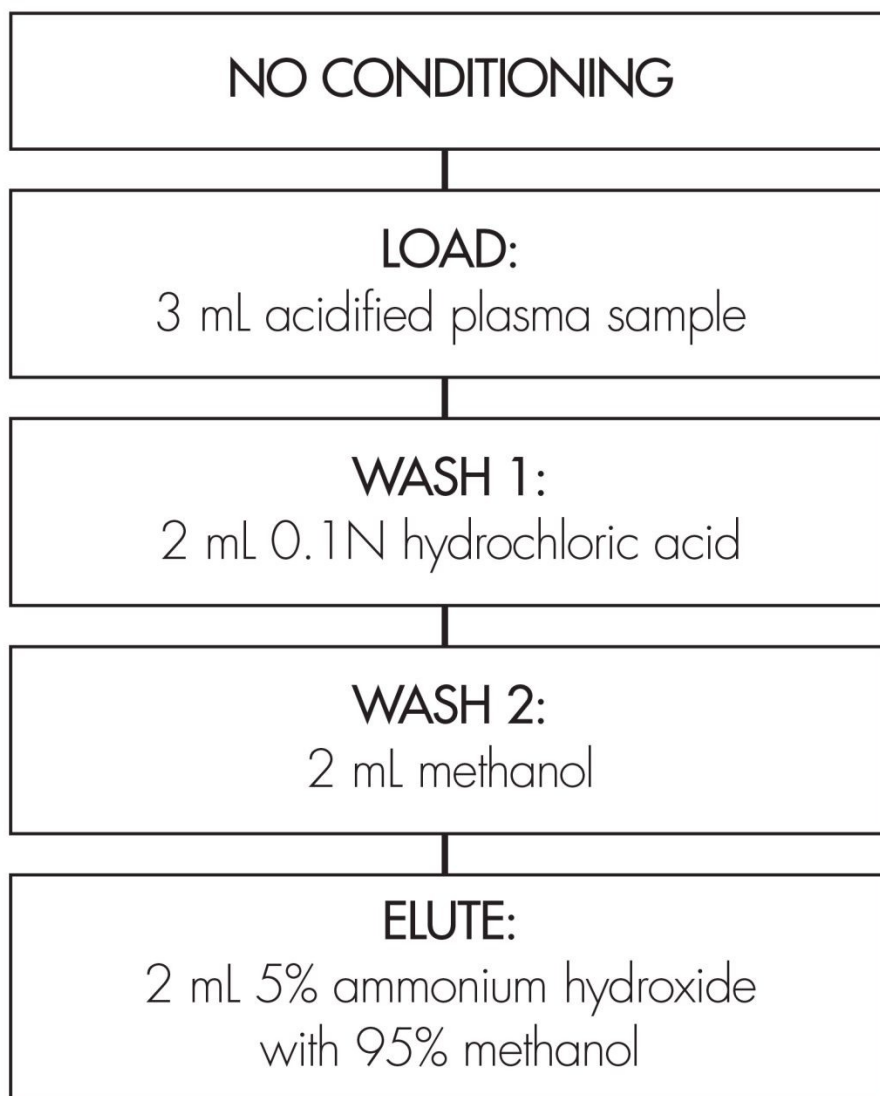
### HPLC Conditions

Column:	Symmetry C <sub>18</sub> , 2.1 x 150 mm, 3.5 μm
Guard column:	Symmetry C <sub>18</sub> , 2.1 x 10 mm, 3.5 μm
Part numbers:	Column - 186000174, Guard - 186000169
Mobile phase:	Methanol/Acetonitrile/0.05% TFA in water 5:5:90
Flow rate:	0.3 mL/min
Injection volume:	80 μL Plasma extract
Temperature:	30° C
Detection:	UV @ 220 nm (0.04 AUFS)

## OASIS<sup>®</sup> MCX EXTRACTION METHOD

Oasis<sup>®</sup> MCX Extraction Cartridge, 3 cc/60 mg

Part Number 186000254



*After elution, the extract is diluted 1:3 with water for HPLC analysis*

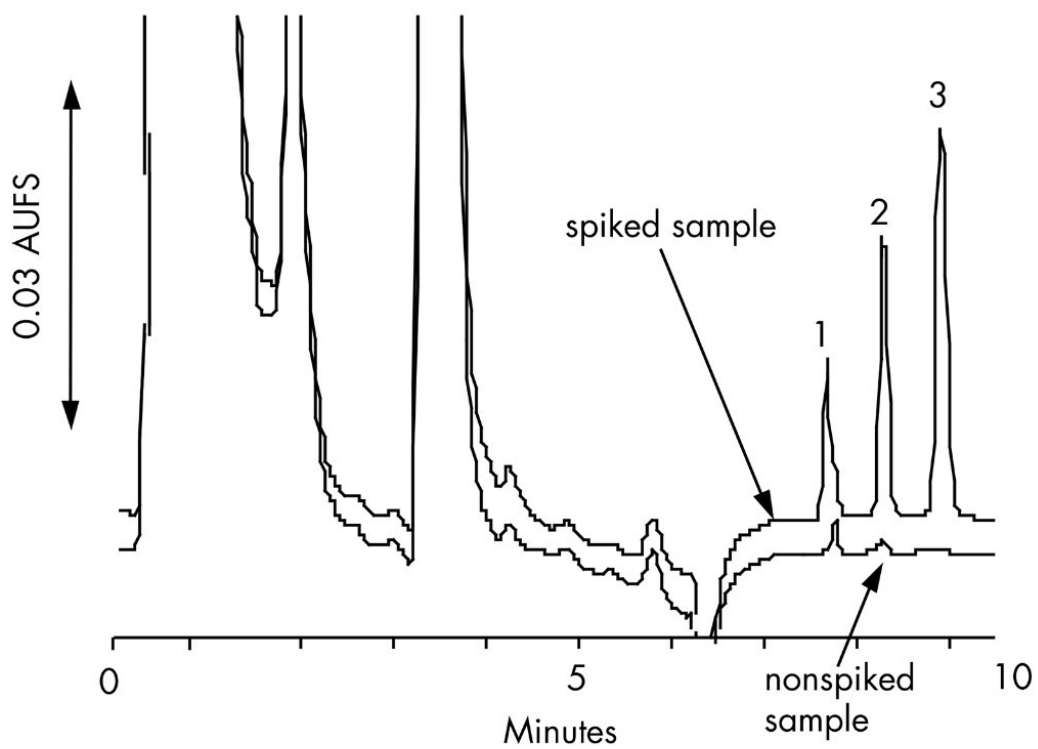
---

## Results and Discussion

The compounds analyzed in this study are:

1. Ranitidine (I.S.)
2. Codeine-6-Glucuronide (C-6-G)
3. Codeine

### Chromatogram of Plasma Extracts: A) Blank B) Spiked Sample



<b>Spike level</b>	<b>% Recovery (n=3) 0.12 µg/mL</b>	<b>% RSD (n=3) 0.6 µg/mL</b>
Codeine	95.4 (5.0)	103.4 (0.9)
Codeine-6-Glucuronide	106.8 (1.9)	104.6 (1.3)

---

## Featured Products

WA31764.64, June 2003

© 2022 Waters Corporation. All Rights Reserved.