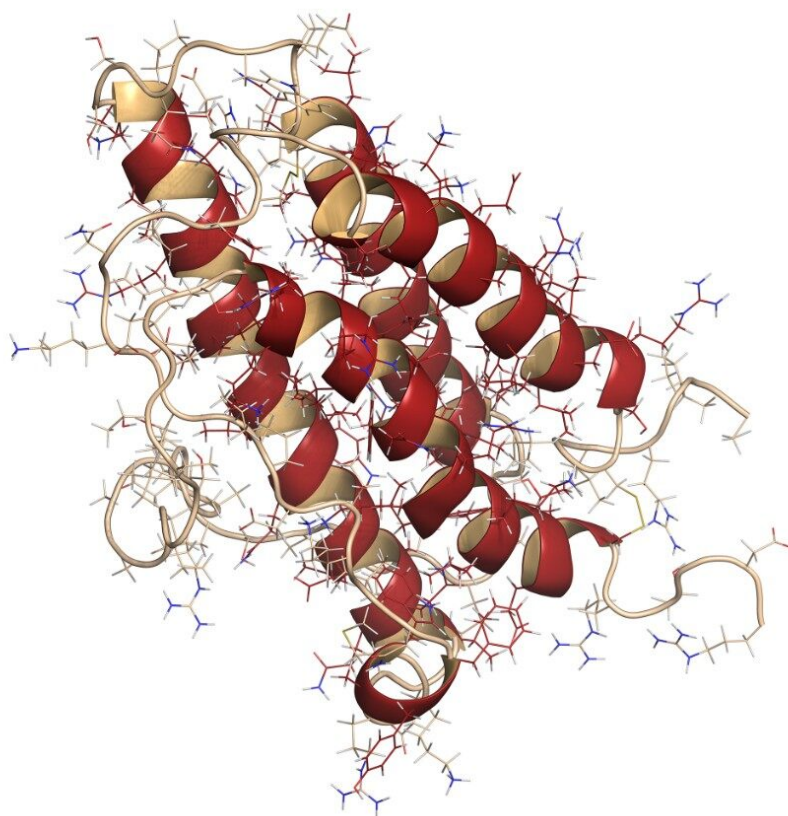


アプリケーションノート

Sub-Femtomole Detection of Protein Digests Using the Q-ToF Premier and nanoACQUITY UPLC System

Iain Campuzano, Chris Hughes, Therese McKenna, Phil Young, Mark Ritchie, James I. Langridge

Waters Corporation



Abstract

In this application note we describe the use of a Q-ToF Premier in combination with a nanoACQUITY UPLC System for the detection of low-level tryptic digests.

Introduction

The use of LC-MS/MS to qualitatively characterize enzymatic protein digests is now standard and widespread throughout protein laboratories. This method has been shown to work well with mixtures of low and medium complexity, while highly complex protein samples are often separated using an extra stage of chromatography prior to analysis via LC-MS/MS.

The mass spectrometer is normally operated in the Data Directed Analysis (DDA) mode, where the instrument automatically selects peptides for MS/MS, based upon their intensity and charge state, as they elute from the HPLC column.

In this application note we describe the use of a Q-ToF Premier in combination with a nanoACQUITY UPLC System for the detection of low-level tryptic digests.



The Waters nanoACQUITY UPLC System and the Waters Micromass Q-ToF Premier Mass Spectrometer.

Experimental

Sample Preparation

Samples of the MassPREP Digest Standards, Enolase, and Bovine Serum Albumin (Waters Corp, Milford MA) were analyzed on the Q-ToF Premier nanoACQUITY UPLC System. Stock solutions at a concentration of 1 pmol/ μ L were prepared by adding 1 mL of aqueous 0.1% formic acid to the lyophilised powder. Samples were then diluted to the desired concentration for injection using 0.1% formic acid. The nanoACQUITY sampler manager was programmed to inject 2 μ L in full loop mode.

nanoACQUITY System

Samples were injected, and separated, on a nanoACQUITY System configured in trapping mode, (with a trapping and analytical column). The trapping column (180 μ m ID x 20 mm), was packed with Symmetry C₁₈ 5 μ m, while the analytical column (75 μ m ID x 100 mm) was packed with Atlantis dC₁₈ 3 μ m. Solvent A was aqueous 0.1% formic acid with solvent B acetonitrile + 0.1% formic acid.

Trapping was performed for 3 minutes using the Binary Solvent Manager operating at a flow rate of 5 μ L/min and at a composition of 3% B. The gradient then changed the composition of the solvent B from 3% B to 40% B over 30 minutes with a wash at 95% B for 2 minutes. The columns were then re-equilibrated for 30 minutes prior to the next injection. The nanoACQUITY provides direct flow to the nano-scale column, without flow splitting. In these experiments a flow rate of 250 nL/min was used to elute the peptides from the analytical column.

Mass Spectrometry

All analysis was carried out using the Waters Micromass Q-ToF Premier mass spectrometer operating in the V-Optics mode. The Q-ToF Premier was operated in Data Directed Analysis mode with an MS survey integration time of 1 second.

The mass spectrometer was programmed to switch into the MS/MS mode on a single precursor ion, when a doubly or triply charged ion exceeded a threshold of 6 counts/sec. MS/MS was performed with an integration time of 2 seconds per precursor, up to a maximum of 12 seconds for each selected ion.

The column eluent was coupled directly to a NanoLC sprayer, fitted to the NanoLockSpray source of the mass spectrometer. In the reference channel of the NanoLockSpray source a 300 fmol/ μ L solution of Glu Fibrinopeptide B was continually delivered by the Auxiliary Solvent Manager of the nanoACQUITY System to provide a lock mass ion at m/z 785.8426. The ASM was operated at a flow rate of 0.5 μ L/min.

The mass spectrometer was calibrated, prior to the analysis, using a mixture of CsI and NaI, over the m/z

range 50–1990.

Results and Discussion

The data presented below illustrates typical results that can be obtained from low-level tryptic digests using the nanoACQUITY/Q-ToF Premier combination in DDA mode. Example data from two digest samples, Bovine Serum Albumin (BSA) and Yeast Enolase are shown. In the case of BSA, data is presented from 250 and 500 attomoles, while in the case of Enolase, data is shown from 125, 250 and 500 attomoles. In each case positive identification of the parent protein could be made and is shown using ProteinLynx Global SERVER v2.2.



Figure 1. ProteinLynx Global SERVER 2.2 databank search result from the LC-MS/MS analysis of 250 amol BSA.

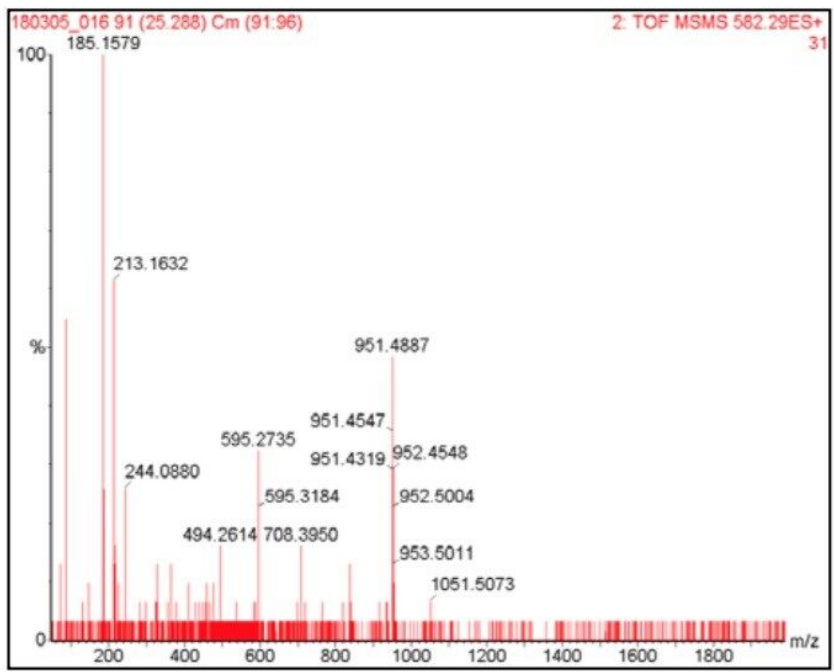


Figure 2. Raw data showing 6 summed two-second MS/MS scans of the ion at m/z 582.29. 250 amol BSA MPDS was injected onto the column in this experiment.

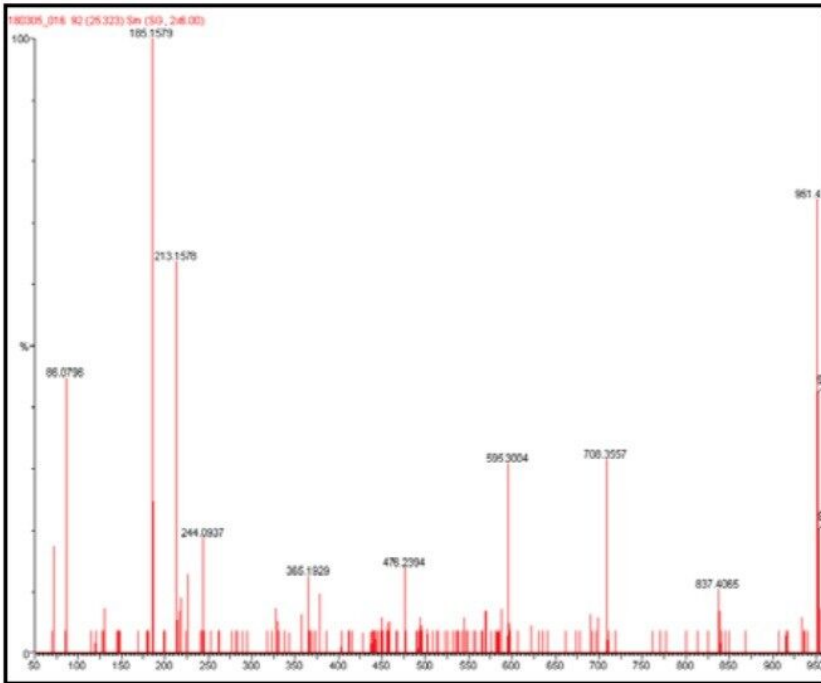


Figure 3. MS/MS data from one two-second integration of the ion at m/z 582.29 obtained from the injection of 250 attomoles of BSA.

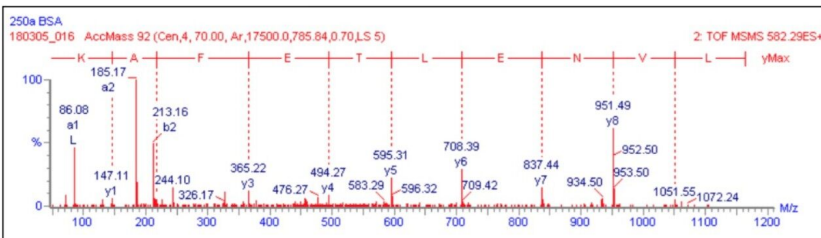


Figure 4. MS/MS spectrum for m/z 582.29 (2+), from the injection of 250 attomoles of BSA; annotated with the "matching y" ions from the identified BSA amino acid sequence.

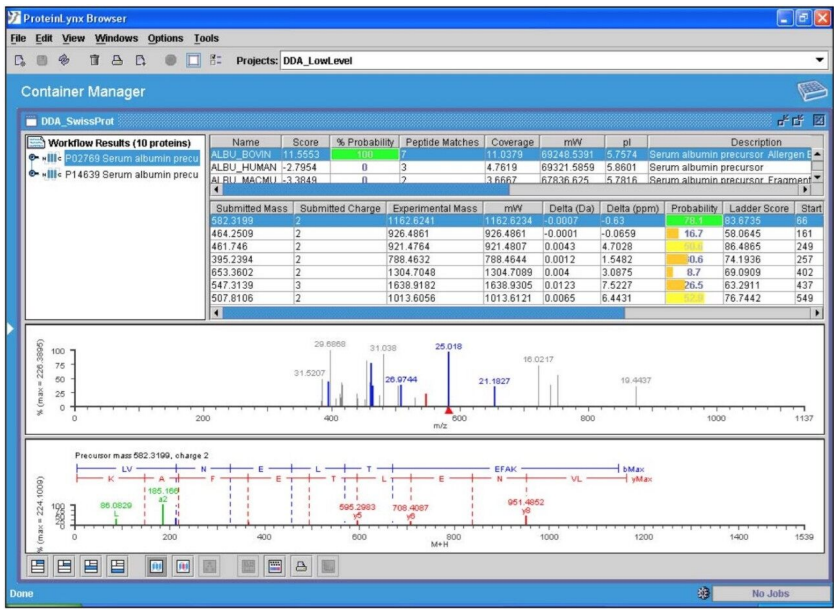


Figure 5. ProteinLynx Global SERVER 2.2 databank search result from the LC-MS/MS analysis of 500 amol BSA MPDS.

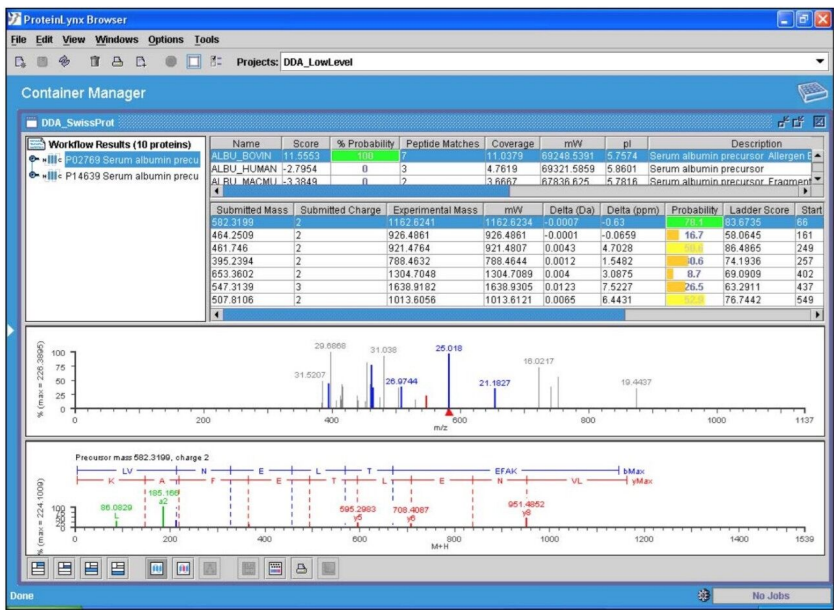


Figure 6. ProteinLynx Global SERVER 2.2 databank search result from the LC-MS/MS analysis of 125attomoles of an Enolase tryptic digest.

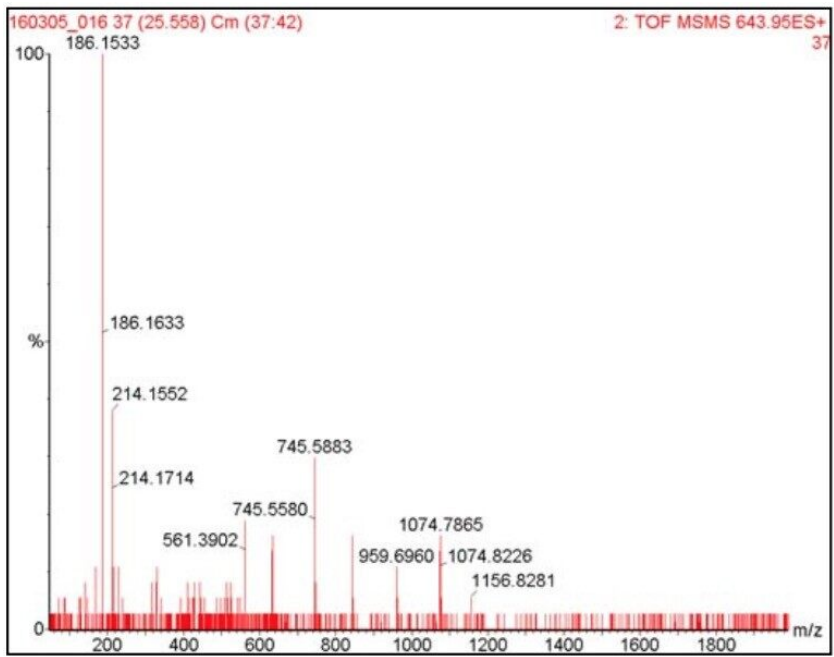


Figure 7. Raw data of 6 summed two-second MS/MS scans from the ion at m/z 643.95. In this case, 125 attomoles of an Enolase tryptic digest was injected onto the column.

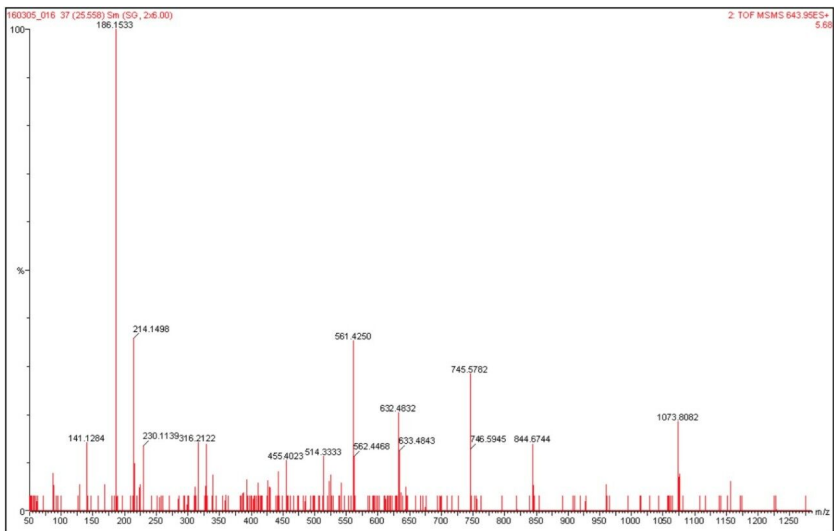


Figure 8. One two-second MS/MS scans from the ion at m/z 643.95(2+). In this case, 125 attomoles of an Enolase tryptic digest was injected onto the column.

Protein	Level injected	# Matching peptides	Sequence coverage
BSA	250 attomoles	4	6.6%
BSA	500 attomoles	7	11%
Enolase	125 attomoles	8	21.3%
Enolase	250 attomoles	10	26.6%
Enolase	500 attomoles	12	34.4%

Table 1. Summary of the proteins analyzed, the number of matching peptides and amino acid sequence coverage obtained from databank searching of the LC-MS/MS data.

Conclusion

- The results presented here clearly show the inherent sensitivity of the nanoACQUITY Q-ToF Premier combination for the analysis of low level protein digests
- The limits of detection in favorable cases can be below 200 attomoles, injected on-column
- This data has been acquired with Atlantis dC₁₈ stationary phase. The use of a nanoscale nanoACQUITY BES 1.7 μM column, in the near future may allow even lower limits of detection to be achieved

Featured Products

ACQUITY UPLC M-Class System <<https://www.waters.com/134776759>>

ProteinLynx Global SERVER (PLGS) <<https://www.waters.com/513821>>

720001252, May 2005

© 2021 Waters Corporation. All Rights Reserved.