

응용 자료

Analysis of Food Sugars/Saccharides in Cough Syrup Using ACQUITY UPLC BEH Amide Columns

Waters Corporation

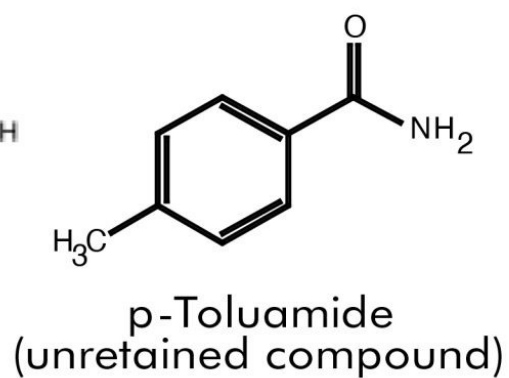
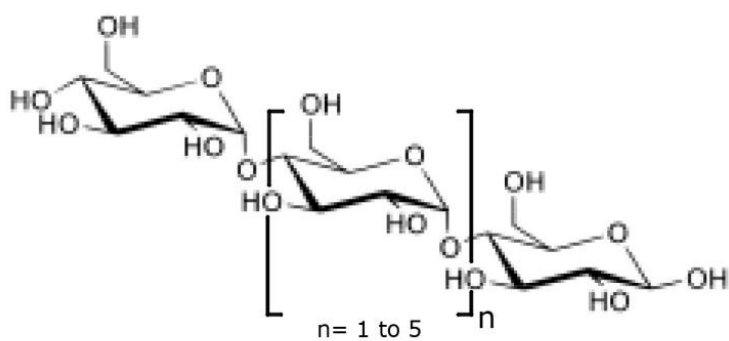
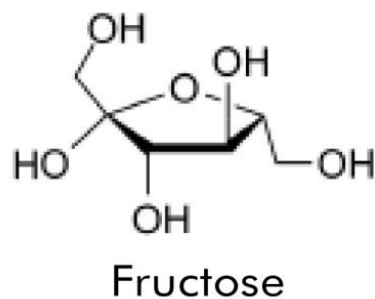
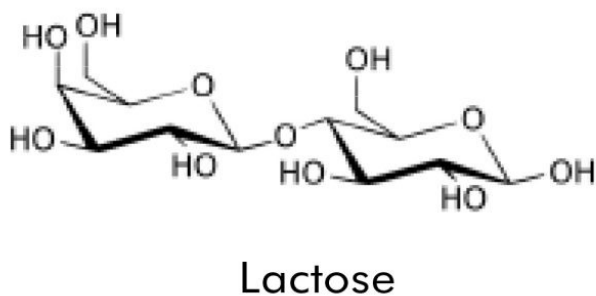
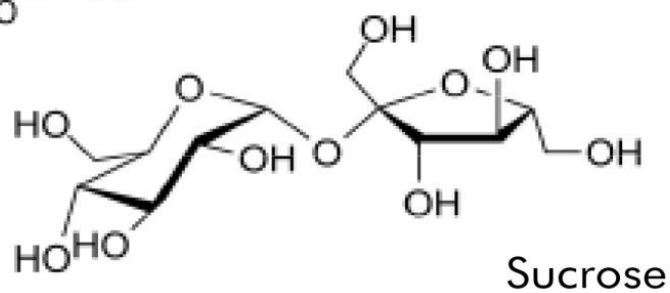
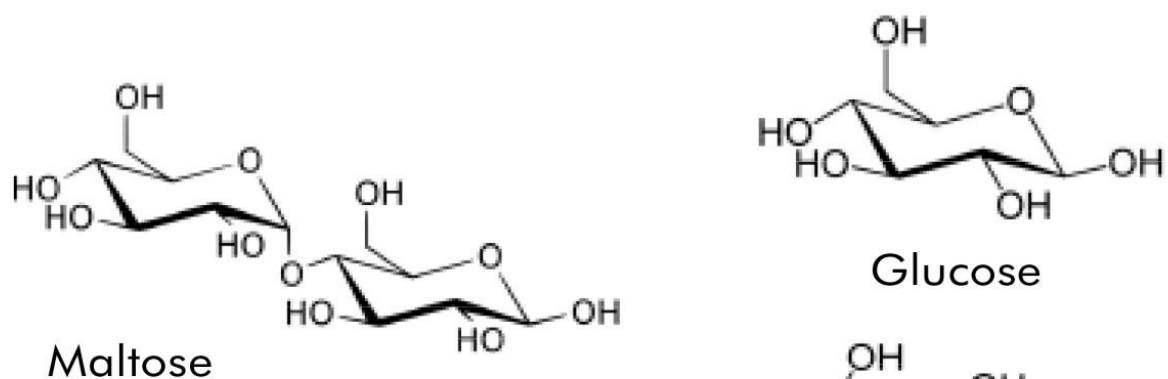
This is an Application Brief and does not contain a detailed Experimental section.

Abstract

This application brief highlights the analysis of food sugars/saccharides in cough syrup using ACQUITY UPLC BEH Amide Columns.

Introduction

Structures



Experimental

Chromatographic Conditions

Column:	ACQUITY UPLC BEH Amide 2.1 x 100 mm, 1.7 μ m
Part Number:	186004801
Mobile Phase A:	80/20 MeCN/H ₂ O with 0.2% triethylamine [TEA]
Mobile Phase B:	30/70 MeCN/H ₂ O with 0.2% triethylamine [TEA]
Flow Rate:	0.26 mL/min
Gradient:	6 minute gradient, 80%-50% MeCN (w/0.2% TEA) with 12 minute re-equilibration
Injection Volume:	1.3 μ L (PLNO)
Sample Concentration:	Standards at 1 mg/mL each, cough syrups at 1% (v/v)
Sample Diluent:	50/50 MeCN/H ₂ O
Column Temperature:	35 °C
Strong Needle Wash:	MeCN/H ₂ O 20/80 (800 μ L)
Weak Needle Wash:	MeCN/H ₂ O 75/25 (500 μ L)
Seal Wash:	MeCN/H ₂ O 50/50

Instrument:

Waters ACQUITY UPLC with ELSD

Gradient

Time (min)	Profile	
	%A	%B
0.00	100.00	0.00
6.00	40.00	60.00
6.01	100.00	0.00
18.00	100.00	0.00

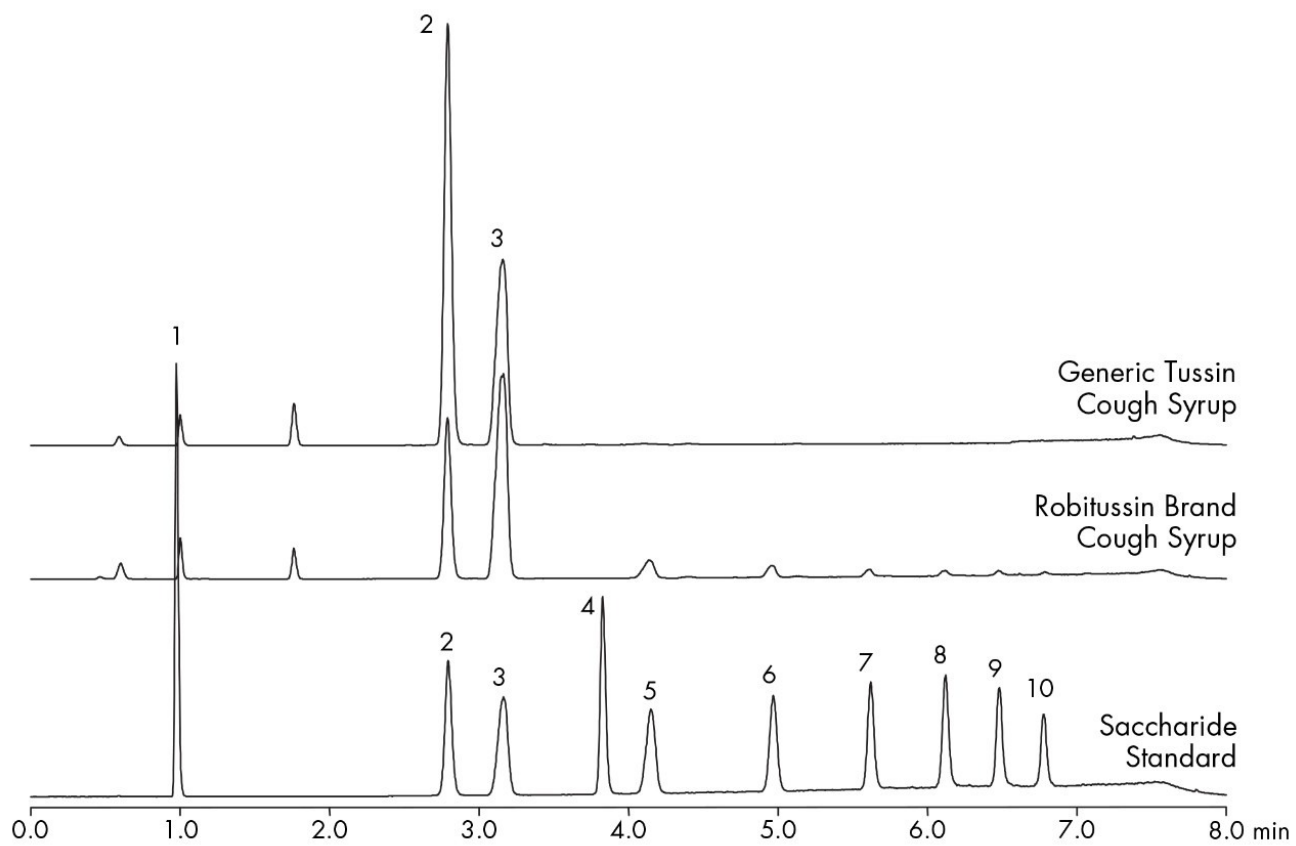
ELSD Conditions

Gain:	200
Pressure:	40 psi
Drift Tube Temperature:	40 °C
Nebulizer:	Cooling
Data Rate:	10 pps
Filter Time Constant:	Normal

Results and Discussion

The compounds analysed in this study are:

1. p-Toluamide
2. Fructose
3. Glucose
4. Sucrose
5. Maltose
6. Maltotriose
7. Maltotetraose
8. Maltopentaose
9. Maltohexaose
10. Maltoheptaose



Featured Products

ACQUITY UPLC ELS Detector <<https://www.waters.com/514219>>

WA60121, October 2009

© 2022 Waters Corporation. All Rights Reserved.