

## Gradient Separation of Bamethan and Albuterol on ACQUITY UPLC BEH HILIC

---

Waters Corporation



This is an Application Brief and does not contain a detailed Experimental section.

### Abstract

This application brief demonstrates the gradient separation of bamethan and albuterol on ACQUITY UPLC BEH

---

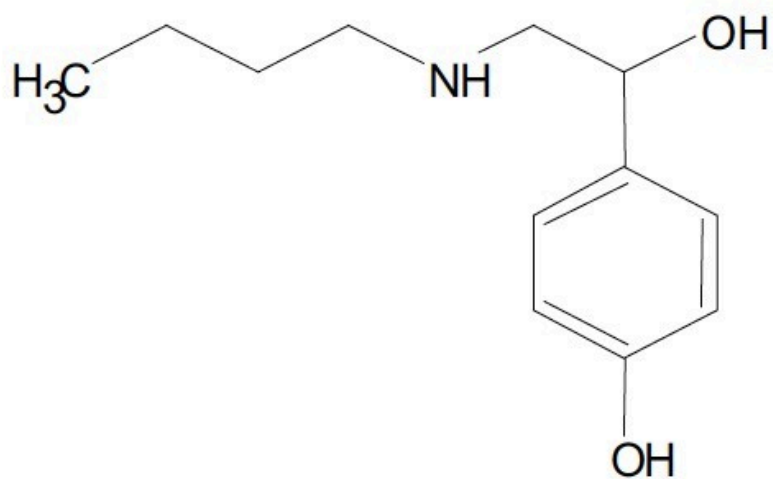
HILIC Columns.

## Introduction

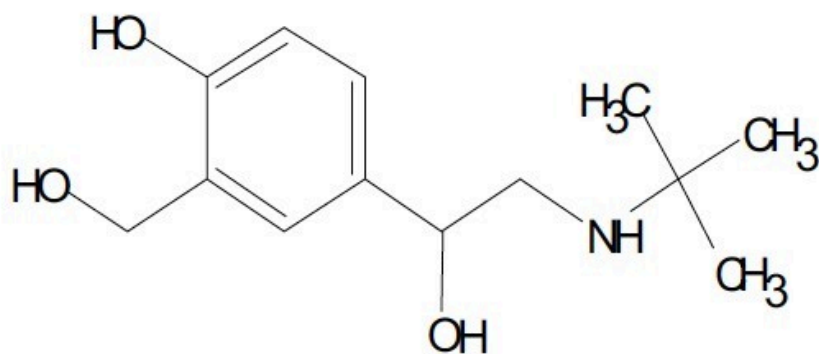
The compounds used in this study are:

1. Bamethan
2. Albuterol

## Bamethan



## Albuterol



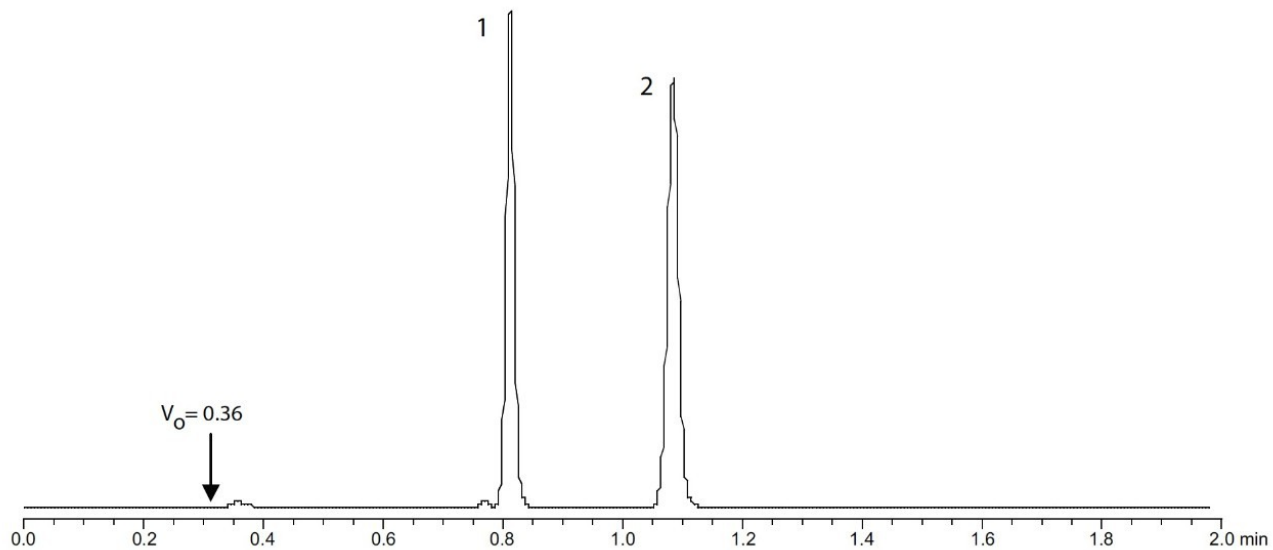
Experimental

---

## Test Conditions

|                                     |  |
|-------------------------------------|--|
| Column:                             | ACQUITY UPLC BEH HILIC, 2.1 x 100 mm, 1.7 $\mu$ m                    |
| Part Number:                        | 186003461  |
| Mobile Phase A:                     | 10 mM NH <sub>4</sub> COOH, 0.2% HCOOH in 90:10 ACN:H <sub>2</sub> O |
| Flow Rate:                          | 0.708 mL/min   |
| Isocratic Mobile Phase Composition: | 100% A   |
| Injection Volume:                   | 0.8 $\mu$ L  |
| Sample Concentration:               | 125 $\mu$ g/mL   |
| Sample Diluent:                     | 75:25 ACN:MeOH with 0.2% HCOOH                                       |
| Temperature:                        | 30 $^{\circ}$ C  |
| Detection:                          | UV @ 280 nm  |
| Sampling Rate:                      | 20 pts/sec   |
| Time Constant:                      | 0.1  |
| Instrument:                         | Waters ACQUITY UPLC with ACQUITY TUV                                 |

## Results and Discussion



## Featured Products

- [ACQUITY UPLC System <https://www.waters.com/514207>](https://www.waters.com/514207)
- [ACQUITY UPLC Tunable UV Detector <https://www.waters.com/514228>](https://www.waters.com/514228)

WA60135, August 2009



© 2021 Waters Corporation. All Rights Reserved.