

アプリケーションノート

Multi-Channel SFC System for Fast Chiral Method Development and Optimization

Lakshmi Subbarao, Ziqiang Wang, Rui Chen

日本ウォーターズ株式会社



Abstract

In this application note, we introduce the first commercially available parallel SFC system, Method Station

X5 SFC System, from its design objectives to operation using 4-benzoyloxy-2-azetidinone as a model compound.

Benefits

The Method Station X5 SFC System offers parallel screening for method development and further optimization in single channel mode, on one platform, for chiral separations by SFC. The proprietary plumbing enables software controlled switching between parallel and single channel mode without the need for any hardware change.

Introduction

According to the FDA policy statement, developing stereoisomeric drugs, each enantiomer should be evaluated.¹ As a result, the pharmaceutical industry has escalated its emphasis on the generation of enantiomerically pure compounds before undertaking pharmacokinetic, metabolic, physiological, and toxicological evaluations.² Chiral chromatography, especially SFC, is the most widely used technique for obtaining milligrams to multi-grams of pure enantiomers in drug discovery. In SFC, supercritical CO₂ combined with polar organic solvent(s), most commonly methanol, are used as the mobile phase. Due to the higher diffusivity and lower viscosity of supercritical fluid, SFC often provides a 3- to 8-fold faster separation than normal-phase HPLC. For chiral purification, SFC also offers significant cost savings by reducing organic solvent usage and removal as well as the time and energy required post-purification. As SFC instrumentation continues to improve, it is gradually overtaking HPLC as the first choice for chiral separations and purification.

At the drug discovery stage, it is important to minimize the time required to obtain pure enantiomers, from milligrams to multi-grams. With stacked injections, such quantities can be obtained using SFC in a matter of hours. However, stacked injections can only be performed under isocratic conditions. Consequently, users often start method development with a screening of multiple chiral stationary phases (CSPs) using a generic gradient and finish the optimization with an isocratic method for scale-up.

Despite the speed advantage SFC can offer, method development still remains one of the major bottlenecks for chiral separations by SFC. Due to the lack of a universal CSP, trial-and-error screening of a set of CSPs has been the predominant approach to chiral method development. Currently, most commercial instruments employ automated column and solvent switching to facilitate this screening process. However, it is time-consuming because each column has to be tested individually in a temporal manner. To circumvent this problem, multi-column, parallel screening approaches in both LC³ and SFC⁴ have been proposed. Typically, an injected sample was carried by the mobile phase and divided into multiple columns

with varying detection schemes. The extent of improvement in throughput depends upon the number of channels the main flow splits. These proposed approaches, however, suffer from the lack of independent control of multi-channel and single-channel required by method development and optimization. After the parallel screening, users would have to either re-plumb the system to the single channel configuration or resort to the use of another dedicated single channel system to perform isocratic optimization.

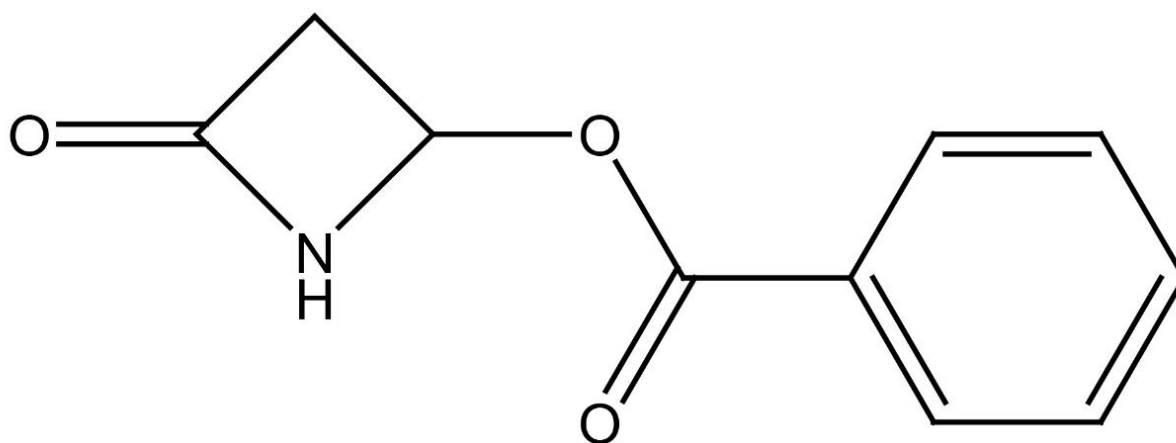
In this application note, we introduce the first commercially available parallel SFC system, Method Station X5 SFC System, from its design objectives to operation using 4-benzoyloxy-2-azetidinone as a model compound.

Experimental

The Method Station X5 SFC System consists of a Fluid Delivery Module (FDM), Alias Autosampler, Analytical-2-Prep Column Oven, Automated Back Pressure Regulator (ABPR), 2998 PDA Detector, and four 2489 UV/Visible detectors. SuperChrom Software was used for data acquisition and analysis. In the current study, each injection is split into five individual channels. All columns were purchased from commercial resources.

Figure 1 shows 4-benzoyloxy-2-azetidinone, obtained from Sigma Aldrich (St. Louis, MO, USA). A stock solution of 2.5 mg/mL was prepared by dissolving the compound in methanol. Key experimental parameters are listed as follows:

	Parallel	Single-Channel
Column	OD-H, AD-H, OJ-H, AS-H, and CC4, all 4.6 x 150 mm	OD-H, 4.6 x 150 mm
Flow rate	12.5 mL/min	2.5 mL/min
Modifier	Methanol	Methanol
Injection volume	10 μ L	2 μ L
Temperature	40 $^{\circ}$ C	40 $^{\circ}$ C
System pressure	120 bar	120 bar
Gradient	5% for 1 min, 5–40% in 5 min, 40% for 1 min, 40-5% in 1 min, and 5% for 1 min	Isocratic at 5%, 6% and 7%
UV wavelength	254 nm	254 nm



4-benzoyloxy-2-azetidinone

Figure 1. The chemical structure of 4-benzoyloxy-2-azetidinone.

Results and Discussion

Despite the lack of one universal column for chiral separations by SFC, it is the experience of many users that more than 75% of the pharmaceutical relevant chiral molecules can be separated by one or multiple of the following CSPs: OD-H, AD-H, OJ-H, and AS-H.⁵ The advancements in CSPs, especially the newly commercialized IC (Chiral Technologies Inc., West Chester, PA) and Cellulose-LUX-2 (Phenomenex, Torrance, CA), have further improved the success rate of chiral separations by SFC. The Method Station X5 SFC System is designed to primarily deal with those chiral molecules that can be separated using the aforementioned four to six CSPs, to quickly select the appropriate CSP in a parallel format, and to optimize the isocratic condition in a single channel mode for ensuing purification. The proprietary plumbing of the Method Station X5 SFC System enables a software controlled switching between parallel and single channel mode without any hardware change.

Figure 2 shows the SFC chromatograms of 4-benzoyloxy-2-azetidinone obtained in parallel screening mode. Both AD-H and AS-H columns yielded baseline resolution of the enantiomers. OD-H generated partial separation. OJ-H and CC4 offered no resolution. Based on the screening results, the system should then be switched to the single channel mode with either AD-H or AS-H for an optimal isocratic method for scale-up. For illustration purposes, we selected the OD-H column instead, for further method optimization to mimic a

common scenario where only partial separation is achieved with a gradient in the parallel mode. Based on the chromatograms shown in Figure 2, we ran a sequence consisting of three methods with 7%, 6%, and 5% modifier respectively.

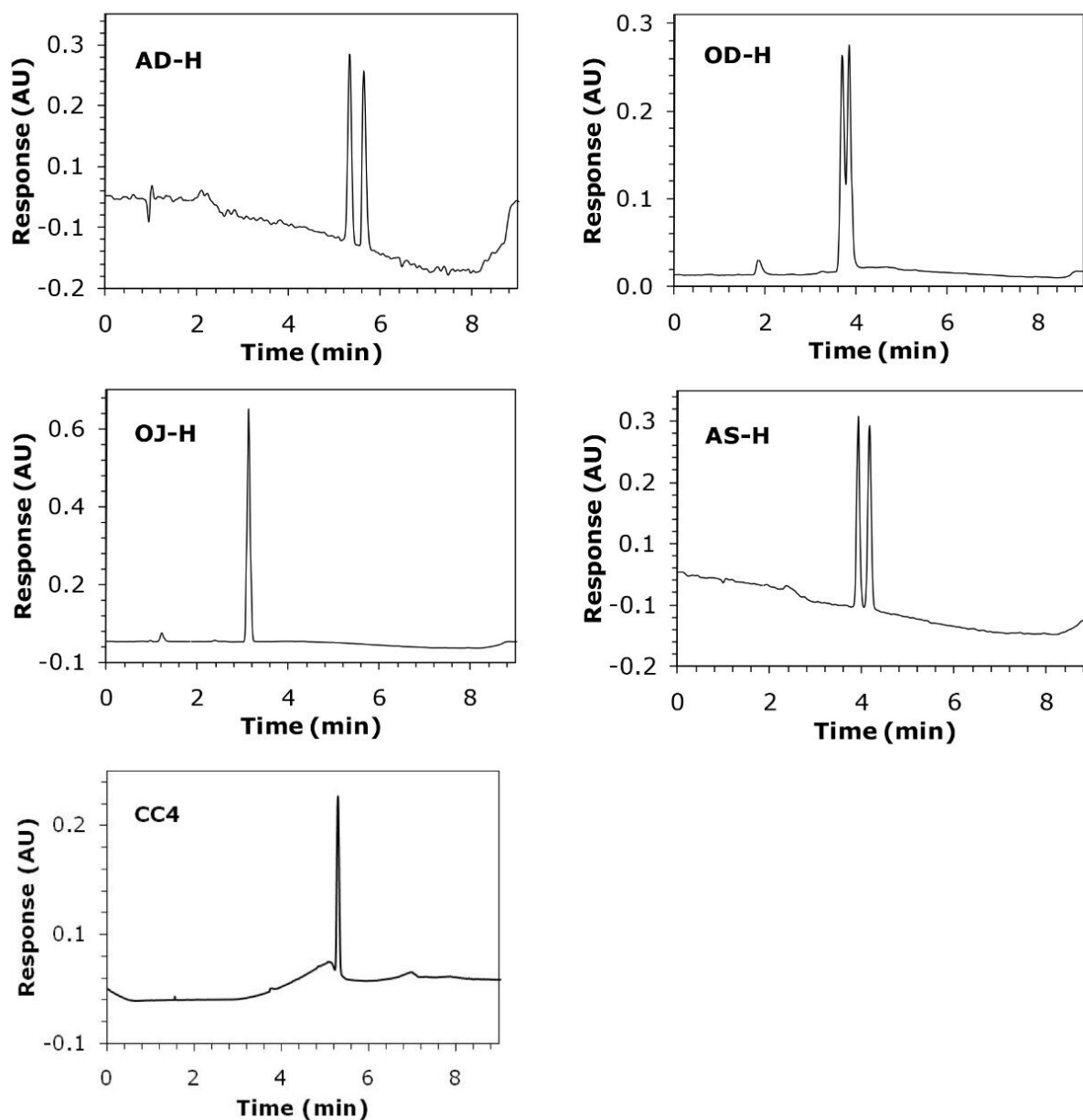


Figure 2. SFC chromatograms of 4-benzoyloxy-2-azetidinone obtained in parallel mode.

The results are shown in Figure 3. In this particular experiment, the 5% isocratic method appears to yield the best resolution.

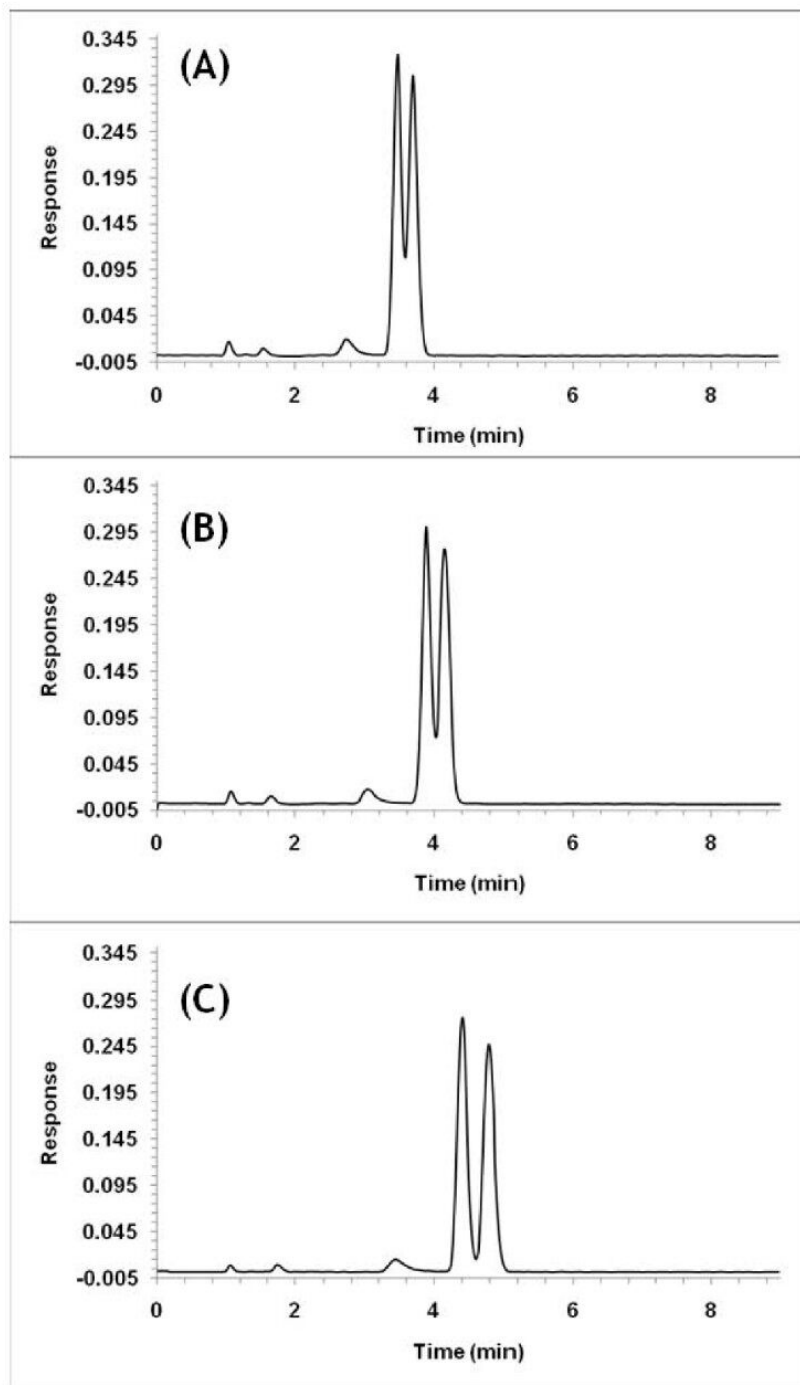


Figure 3. SFC chromatograms of 4-benzoyloxy-2-azetidinone obtained under isocratic conditions using various volumes of methanol.

It is noted that the Method Station X5 SFC System is applicable for achiral method development and optimization as well, as long as a limited number of columns can be selected to encompass a sufficiently wide selectivity range.

Conclusion

The Method Station X5 SFC System offers a streamlined process for SFC method development and optimization. The proprietary plumbing enables a software controlled switching between parallel and single channel mode. The system will expedite the method development by five-fold; hence, shortening the turnaround time for those molecules that can be separated by the commonly used CSPs.

References

1. FDA' s Policy Statement f 1. or the Development of New Stereoisomeric Drugs May 1, 1992; Corrections made on January 3, 1997. <http://www.fda.gov/Drugs/GuidanceComplianceRegulatoryInformation/Guidances/ucm122883.htm>
2. Zhang Y, Wu D, Wang-Iverson DB, and Tymiak A. *A. Drug Discov. Today*, 2004; 10 (8): 571-577.
3. Zhang Y, Watts W, Nogle L, and McDonnell O. *J. Chromatogr. A.*, 2004; 1049: 75-84.
4. Zeng L, Xu R, Laskar DB, and Kassel DB. *J. Chromatogr. A.*, 2007; 1169: 193-204.
5. Francotte ER. *J. Chromatogr. A.*, 2001; 906: 379-397.

Featured Products

[2998 Photodiode Array \(PDA\) Detector <https://www.waters.com/1001362>](https://www.waters.com/1001362)

720003540, October 2010

©2019 Waters Corporation. All Rights Reserved.