

Collision Cross Section: A New Identification Point for a “Catch All” Non-Targeted Screening Approach

Michael McCullagh, Gareth E. Cleland, Vincent Hanot, Sara Stead, Joanne Williams, Séverine Gosciny, Ramesh Rao, Jennifer A. Burgess

Waters Corporation, Wetenschappelijk Instituut Volksgezondheid-Institut Scientifique de Santé Publique

Abstract

In this application note, we present CCS, derived from ion mobility drift times, as a new identification parameter that can efficiently reduce the number of false detections when used in combination with conventional accurate mass and retention time information.

Benefits

- Collision cross section (CCS) values can be used as a new point of identification in routine screening workflow.
- Provides a rapid and generically efficient way to screen for residues in very complex samples.
- False positive identifications can be reduced and false negatives avoided while using less stringent screening parameters.
- Minimizes resource consuming retention time confirmations and the use of expensive standards.

Introduction

The SANCO/12571/2013 guidance document implemented in 2014 describes the method validation and analytical quality control guidelines to support the validity of data used for checking compliance with maximum residue limits (MRLs), enforcement actions, or assessment of consumer exposure to pesticides in the EU.¹ For high resolution MS systems, the requirements for identification are that the quasi molecular ion and at least one fragment ion are obtained with mass accuracy <5 ppm. In addition isotope ratios and signal-to-noise (S/N) are considered. It is also stated that “identification relies on proper selection of diagnostic ions”. The ratio of the chromatographic retention time of the analyte to that of a suitable internal standard, *i.e.* the relative retention time of the analyte, should correspond to that of the calibration solution with a tolerance of ± 0.2 minutes for LC. It is also stated that “different types and modes of mass spectrometric detectors provide different degrees of selectivity, which relates to the confidence in identification”. Requirements for identification such as maximum tolerances for ion ratios are provided. These requirements should be regarded as guidance criteria for identification, not as absolute criteria, to prove the presence or absence of a compound.

The current guidelines have been modified to make retention time tolerances more stringent and could result in system-specific assay parameters being generated. Retention time tolerances can be impacted by matrix shifts, system setup, and column conditions. Applying a “catch all” approach would provide a generic set of processing parameters that would allow qualitative screening methods to be developed which are applicable across a wide variety of matrices, and provide a more efficient transfer between instruments and laboratories. The application of additional filtering such as isotope pattern match and fragment ions enables less stringent screening parameters and provides increased specificity simultaneously. This approach becomes less system specific.

Pesticide residue analyses in food has become a more difficult task considering the increasing number of compounds that need to be monitored at lower concentrations using generic extraction procedures. Qualitative multi-residue methods focus only on detection (demonstration of neither recovery nor linearity is required), and can therefore alleviate the quantification process.

Full-scan high resolution MS offers a higher specificity with theoretically no limitation on the number of compounds detected, but it is still challenging to rapidly and efficiently identify targeted compounds present in a sample with a large number of co-extracted matrix components.

The key to successful implementation is the ability to efficiently identify targeted compounds present in a sample with an acceptable level of false negative results ($\leq 5\%$) as outlined in the EU guidelines. Although there is no requirement in the guidelines regarding the number of false detects, it is desirable to keep their number as low as possible to minimize the time required for additional investigation and hence to reduce the overall cost. The challenge is to remove false detections through careful optimization of the software screening parameters, but also to deal with very complex matrices that can produce false negative identifications.

Collision cross section (CCS) is a robust and precise physicochemical property of an ion. CCS is an important distinguishing characteristic of an ion that is related to its chemical structure and three-dimensional conformation, illustrated in Figure 1, where the shadow of the rotating three-dimensional ion represents the average collision cross section. The use of CCS data offers the potential to reduce the initial specificity requirements of applied screening parameters. Previously generated CCS data have been entered into a scientific library within the Waters UNIFI Scientific Information System. Expected and previously determined CCS values can be utilized to reduce false identifications in proficiency test samples and matrix matched calibrant series analyzed, while applying wider screening tolerance parameters. In this application note, we present CCS, derived from ion mobility drift times, as a new identification parameter that can efficiently reduce the number of false detections when used in combination with conventional accurate mass and retention time information.

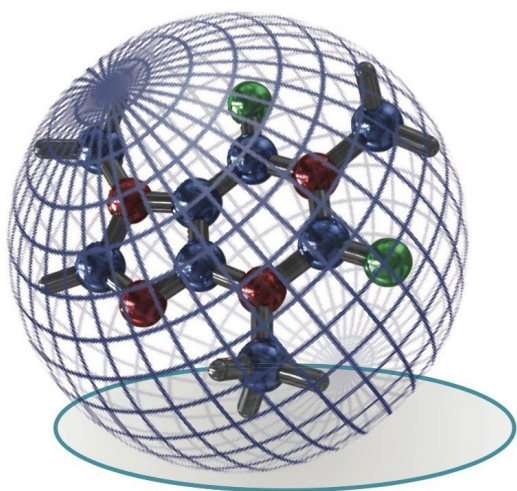


Figure 1. Illustration of rotating 3-dimensional conformation of an ion and average collision cross section (shadow).

Experimental

UPLC conditions

UPLC system:	ACQUITY UPLC I-Class
Column:	ACQUITY UPLC BEH C ₁₈ 100 mm x 2.1 mm, 1.7 μ m
Column temp.:	45 °C
Flow rate:	0.45 mL/min
Mobile phase A:	Water (0.1% formic acid)

Mobile phase B: Acetonitrile (0.1% formic acid)

Injection volume: 5 μ L

Gradient

Time (min)	%A	%B
0.00	98.0	2.0
0.25	98.0	2.0
12.25	1.0	99.0
13.00	1.0	99.0
13.01	98.0	2.0
13.00	98.0	2.0
17.00	98.0	2.0

MS conditions

MS system: SYNAPT G2-S

Ionization mode: ESI+

Desolvation temp.: 550 °C

Mass range: 50 to 1200 Da

Acquisition rate:	5 spectra/sec
Capillary voltage:	1 kV
Cone voltage:	20 V
Drift gas:	N ₂
Collision energy ramp:	10 to 45 eV
IMS wave velocity range:	650 m/s
IMS wave height:	40 V
IMS gas flow:	90 mL/min
IMS duty cycle:	10.8 ms
Lock mass:	<i>m/z</i> 556.2766 (Leucine enkephalin)

Sample preparation

10 g of homogenized sample was extracted with 60 mL of 20-mM ammonium acetate in methanol using an Ultra-Turrax device. the crude extract was then filtered and diluted up to 100 mL with 5-mM ammonium acetate in water before injection.

An organic mandarin sample was used to produce a matrix-matched curve and a previous European ring-test FV-13 sample was analyzed (European Commission proficiency tests for pesticide residues in fruits and vegetables. FV-13 Mandarin Homogenate, 2011).

Results and Discussion

Pear, ginger, leek, and mandarin matrices were spiked with a mixture of pesticide standards and ion mobility drift time values of the pesticides in the matrix were determined. Ion mobility drift times obtained for each respective matrix were plotted against their respective m/z . From Figure 2, it can be seen that the ion mobility of the pesticide standards is independent of the matrix components and that the drift times of the pesticides in each matrix overlay each other. Therefore, ion mobility drift times can be utilized as a confirmatory parameter to increase confidence in identification and help to further reduce false detections.

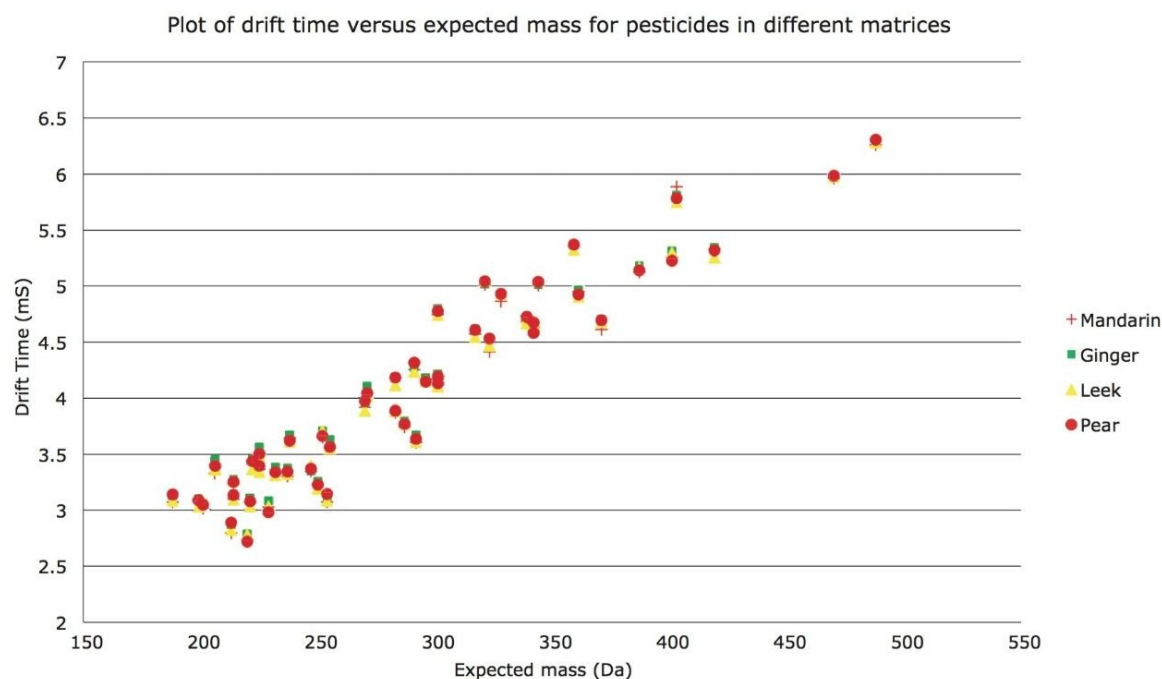


Figure 2. Plot for 50 pesticides of ion mobility drift time against pesticide m/z , fortified in food commodity matrices of mandarin, ginger, leek, and pear.

Ion mobility drift times, from the pesticide solvent standards and the analyzed pesticide matrix matched samples were shown to statistically belong to the same population, as shown in Figure 3. A one-tailed t test was performed and a probability that the two groups belonged to the same population was highly significant. Based upon these initial studies software development was undertaken, which enables ion mobility drift times and hence collision cross sections to become part of a routine screening workflow.

False detects

The challenge of avoiding false detections is clearly illustrated in Figure 4, where the impact of the matrix upon the expected retention time is shown for boscalid – the expected retention time obtained using solvent standards was 7.33 minutes. For leek and ginger, retention time errors of 0.33 min and 0.43 min were obtained. These are outside of the SANCO/12571/2013 tolerance guidelines. If a tolerance window of +/- 0.2 min was applied in the screening parameters set, two false negative detections would have resulted. These results simply illustrate the realistic challenge of residue screening assays.

Retention times are not only impacted upon by the matrix, but variations can occur from laboratory to laboratory where factors such as chromatographic system setup, organic solvent, water, and human error can impact results.

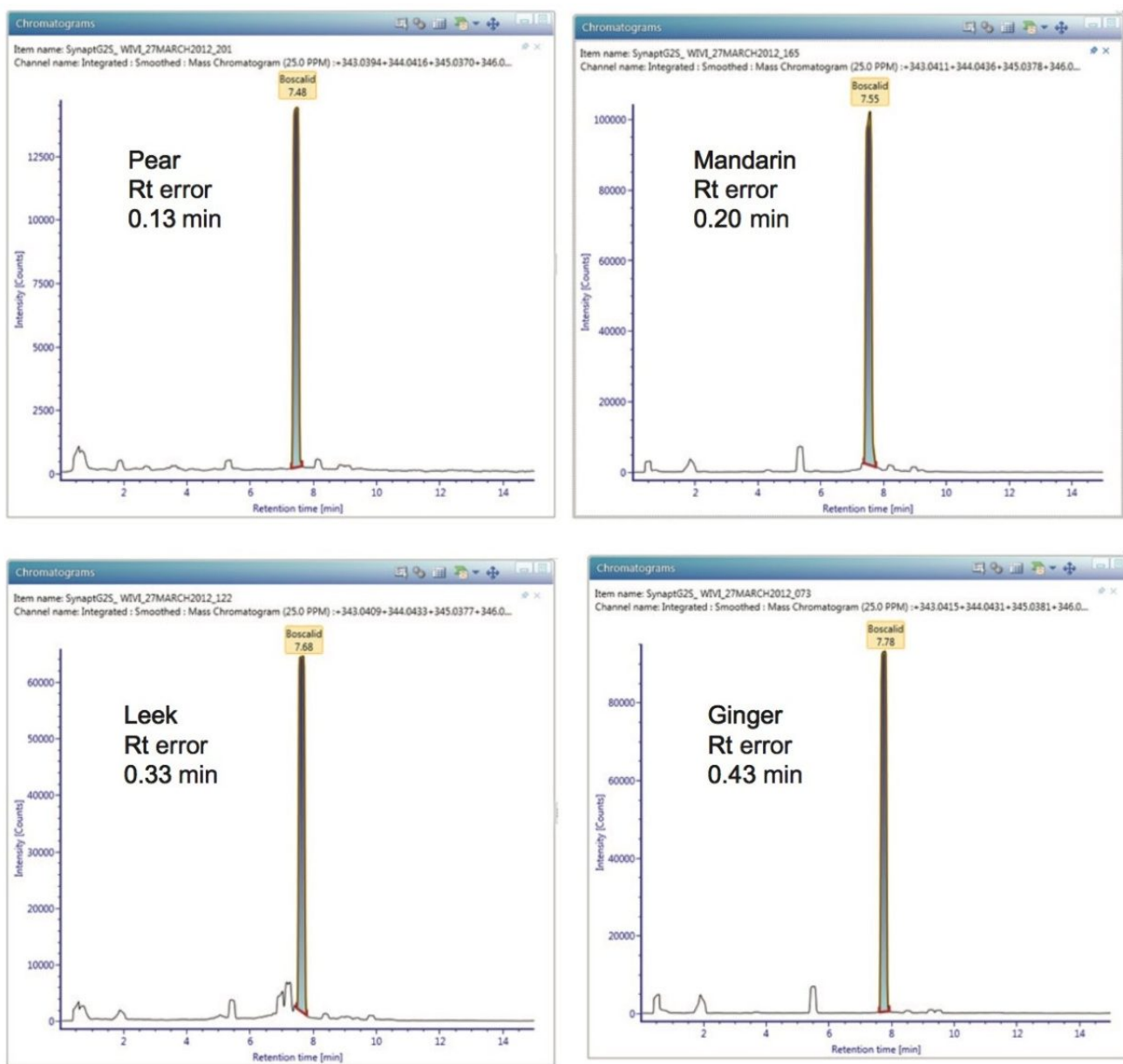


Figure 4. Illustration of the impact of commodity matrix on expected retention time error of the pesticide boscalid. Boscalid solvent standard retention time was 7.33 minutes.

The complexity of the mandarin matrix is demonstrated in Figure 5, where the two-dimensional separation achieved using the ACQUITY UPLC I-Class System and ion mobility MS is presented, and the position of boscalid is indicated by the yellow marker.

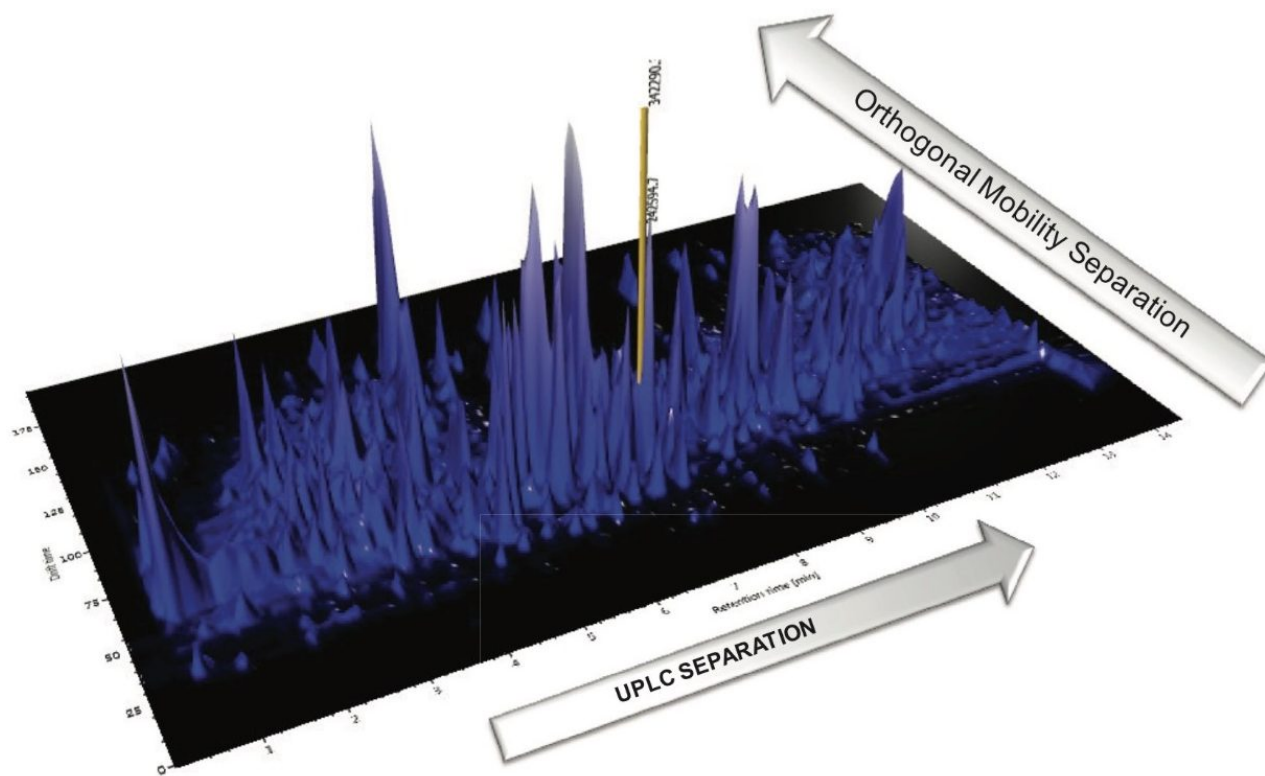


Figure 5. Two-dimensional separation using the ACQUITY UPLC I-Class System with ion mobility MS, where the complexity of the mandarin matrix with the boscalid pesticide residue is highlighted.

During this study, five laboratories were given a generic protocol and asked to analyze the solvent standards and matrix-matched samples as previously described. The samples were prepared and aliquots were provided to the five laboratories taking part in order to determine inter-laboratory reproducibility. In Figure 6 shows the spread of retention times that were obtained for 40 pesticides on five independent UPLC-IMS systems. All data were acquired using the same generic UPLC and mass spectrometry system parameters; no other system parameters were stipulated.

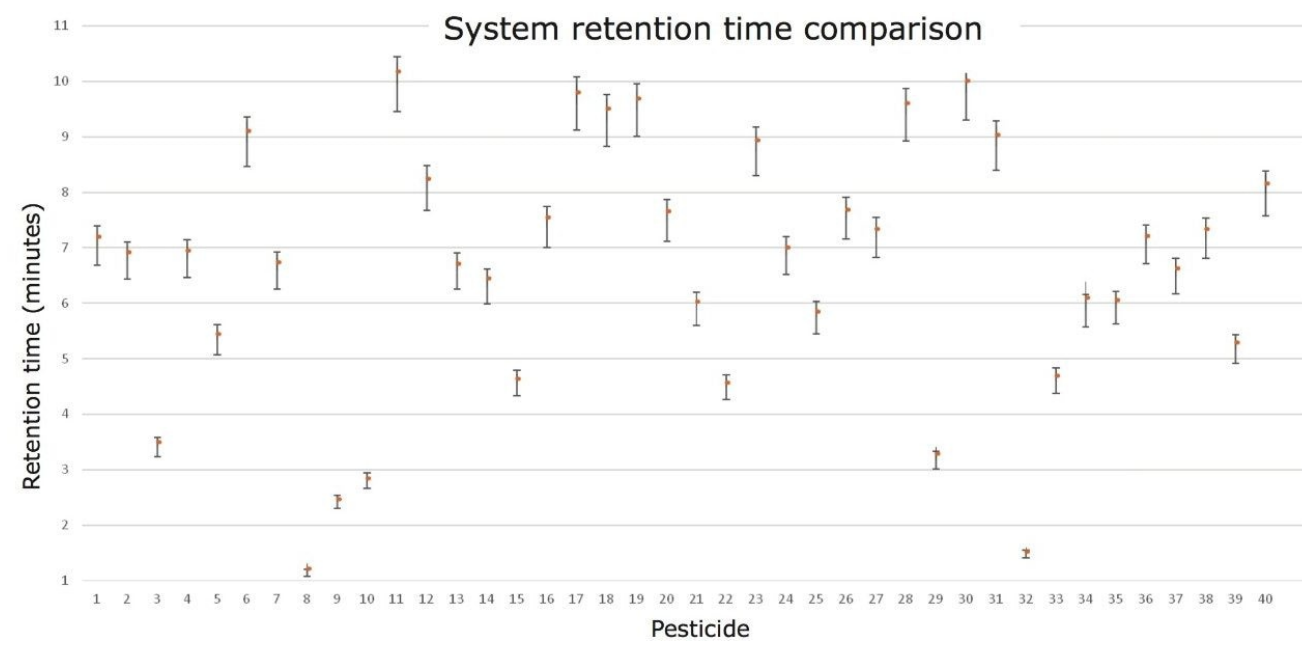


Figure 6. Comparison of the retention time deviation spread compared to the mean from five different global laboratories equipped with ACQUITY UPLC-IMS systems.

Although inter-laboratory reproducibility challenges can be overcome, the spread of retention times observed illustrates the challenge of using generic methods in inter-laboratory studies. The retention time for boscalid achieved from five different laboratories is presented in Table 1. This data demonstrates the variations that can occur due to inter/intra laboratory hardware setup and the commodities being analyzed. This further justified our goal of creating a generic “catch all” screening approach that is capable of overcoming the practical idiosyncrasies of residue analysis.

System	Retention time
UK laboratory 1	7.04
USA laboratory 1	7.29
USA laboratory 2	7.14
UK laboratory 2	7.22
Belgium laboratory (WIV-ISP)	7.35

Table 1. Retention times obtained for boscalid on five different global laboratories equipped with ACQUITY UPLC-IMS systems.

To avoid high false detect rates from an automatic screening system, different parameters and related criteria that can impact peak designation should be carefully tuned and finalized. The same protocol was applied to a previous proficiency test sample, FV-13. The first step of tolerance criteria was applied and 29 pesticide residues matching the criteria were observed. The resulting data was subsequently filtered using 10 ppm mass accuracy on the precursor ions, thereby removing seven potential false detects and reducing the list down to 22. Further filtering with fragmentation criteria resulted in ten matches in total. Ultimately, applying a CCS tolerance of 2% reduced the number of compounds to eight, removing two more false detect identifications.

	Mass accuracy criteria for precursor ion	Rt criteria	CCS criteria	No. of identifications	No. of false detections
First step: component assignment	20 ppm	± 0.5 min	10%	29	21
Second step: Mass accuracy narrow window	10 ppm	± 0.5 min	10%	22	14
Third step: filter on expected fragments	10 ppm	± 0.5 min	10%	10	2
Ultimate step: CCS narrow window	10 ppm	± 0.5 min	2%	8	0

Table 2. Summary of the different UNIFI workflow screening steps and the impact on results for the tested FV-13 sample.

See Table 2 for a complete summary. In this study, under the conditions used, eight compounds were detected and identified. Importantly it should be noted that 100% of the detected compounds were identified correctly. Also this approach used a standard CCS screening workflow to interrogate the data. After the initial data processing has been performed and the component summary reviewed, by simply selecting the workflow step allows the impact upon the results obtained to be reviewed. Once the data have been processed, workflow steps, including tolerances and filters, can be employed and incorporated into a workflow design. There is no requirement to reprocess the data.

Figure 7 shows an example component summary where the avoidance of false positive and negative detections is illustrated in the results from one of the laboratories. For this particular compound/laboratory combination, if the mass tolerance parameters had been restricted to 5 ppm, thiabendazole (mass accuracy 7.68 ppm) would have been discarded and a false negative would have resulted. The CCS error for thiabendazole, however, was just -0.28%. An analyst would likely postulate that isofenphos-methyl was correctly identified because a mass accuracy of 0.5 ppm was obtained. The CCS error measured for isofenphos-methyl was, however, 3.49%. With the use of IMS-MS and the application of a 2% CCS tolerance, a false positive and a false negative was avoided. The time-

consuming process of ruling out a false positive can be avoided and more importantly, the consequences of a false negative can be avoided as well.

Component name	m/z	Collision cross section error (%)	Observed collision cross section (Å²)	Expected collision cross section (Å²)	Mass error (ppm)	Expected RT (min)
1 Carbendazim	192.0774	-0.48	78.33	78.71	3.59	2.17
2 EPN	324.0445	-0.38	104.26	104.66	-2.72	8.70
3 Imazalil	297.0560	-0.28	101.82	102.11	1.34	5.08
4 Indoxacarb	528.0790	-0.06	136.49	136.57	1.65	8.74
5 isofenphos-methyl	332.1082	3.49	104.59	104.84	0.50	8.26
6 Prochloraz	307.9596	-0.14	99.03	99.17	-3.24	6.67
7 Pyriproxifen	322.1438	-0.22	115.87	116.13	0.18	9.21
8 Spinosad	732.4704	0.00	201.00	201.01	3.13	7.07
9 Thiabendazole	202.0449	-0.28	79.42	79.65	7.68	2.34

Figure 7. UNIFI component summary illustrating the avoidance of false positive and negative detections.

The application of less stringent parameters in terms of mass accuracy and retention time tolerance in combination with CCS measurements can provide greater confidence when dealing with the analytical challenges of residue screening. This approach has the potential to create inter/intra generic processing methods and also to overcome the requirement of repeatedly performing the expensive process of retention confirmation using analytical standards.

Conclusion

- Combining ACQUITY UPLC with ion mobility-MS provides an added dimension of separation and collision cross section measurement to deliver a higher degree of specificity for the screening of

pesticide residues in food.

- A residue screening “catch all” approach can be achieved using wider screening tolerance parameters without increasing false positives, while also providing confidence that false negative detections have not occurred.
- Costly resource-consuming retention time confirmation using expensive standards can be reduced using ACQUITY UPLC with ion mobility-MS.
- CCS screening has the potential to permit generic inter/intra laboratory processing methods, while efficiently reducing the number of false positive identifications.
- Additional to retention time, precursor ion, and fragment mass accuracy that are traditionally used for screening parameters, the results presented here indicate that CCS can be used to provide complimentary orthogonal identification information.
- Making full use of ion mobility features and screening power in addition to software processing provides a rapid and a generic way to efficiently screen for compounds, even in very complex samples.

References

1. Method Validation and Quality Control Procedures for Pesticide Residues Analysis in Food and Feed: Document No. SANCO/12571/2013.

Featured Products

MassLynx MS Software <<https://www.waters.com/513662>>

ACQUITY UPLC I-Class PLUS System <<https://www.waters.com/134613317>>

UNIFI Scientific Information System <<https://www.waters.com/134801359>>

SYNAPT G2-Si High Definition Mass Spectrometry <<https://www.waters.com/134740622>>

720005055, June 2014

©2019 Waters Corporation. All Rights Reserved.

[Terms of Use](#) [Privacy](#) [Trademarks](#) [Sitemap](#) [Careers](#) [Cookie](#)
[Cookie](#) [设置](#)

沪 ICP 备06003546号-2

京公网安备 31011502007476号