

Nota de aplicación

GlycoWorks HILIC SPE Robust Glycan Sample Preparation

Matthew A. Lauber, Jennifer L. Fournier, Stephan M. Koza, Kenneth J. Fountain

Waters Corporation

This is an Application Brief and does not contain a detailed Experimental section.

Abstract

This application brief demonstrates the benefits of using HILIC as an ideal separation mode for glycans as well as the robustness of HILIC in an SPE format.

Benefits

Glycans are highly polar biomolecules, making them amenable to Hydrophilic Interaction Chromatography (HILIC) based Solid Phase Extraction (SPE).

Introduction

Reversed-phase (RP) chromatography, though universally accepted for a majority of compounds, is not particularly well suited for analytes that are hydrophilic in nature. When subjected to RP chromatography, polar

compounds are often poorly retained or separated with non-optimal selectivity. Alternatively, Hydrophilic Interaction Chromatography (HILIC) can be used to successfully improve retention of very polar species, such as the glycans encountered during the characterization of protein therapeutics. There are over 40 highly cited published papers using HILIC chemistry for the separation of glycans (search on SciFinder June 2014). One reason for this is that this mode of separation is ideal for these types of compounds due to their highly polar nature. Polar analytes can be strongly and selectively retained onto a HILIC stationary phase when a low polarity mobile phase is used. The concept can be simplified by describing it as like-attracts-like.² Specifically, the retention of glycans onto a HILIC stationary phase can be explained in terms of the hydrogen bonding as well as ionic and dipole-dipole interactions that occur while the glycans partition into an immobilized water layer.

This technique can be exploited as a form of solid phase extraction (SPE) with the goal to clean up and concentrate the analyte of interest, in this case glycans.

Through sequential load wash and elution steps, one can successfully purify glycans while removing many of the less polar "contaminants" found in deglycosylation and post-derivatization mixtures. Overall, HILIC provides many benefits as an attractive mode of separation for glycans.¹

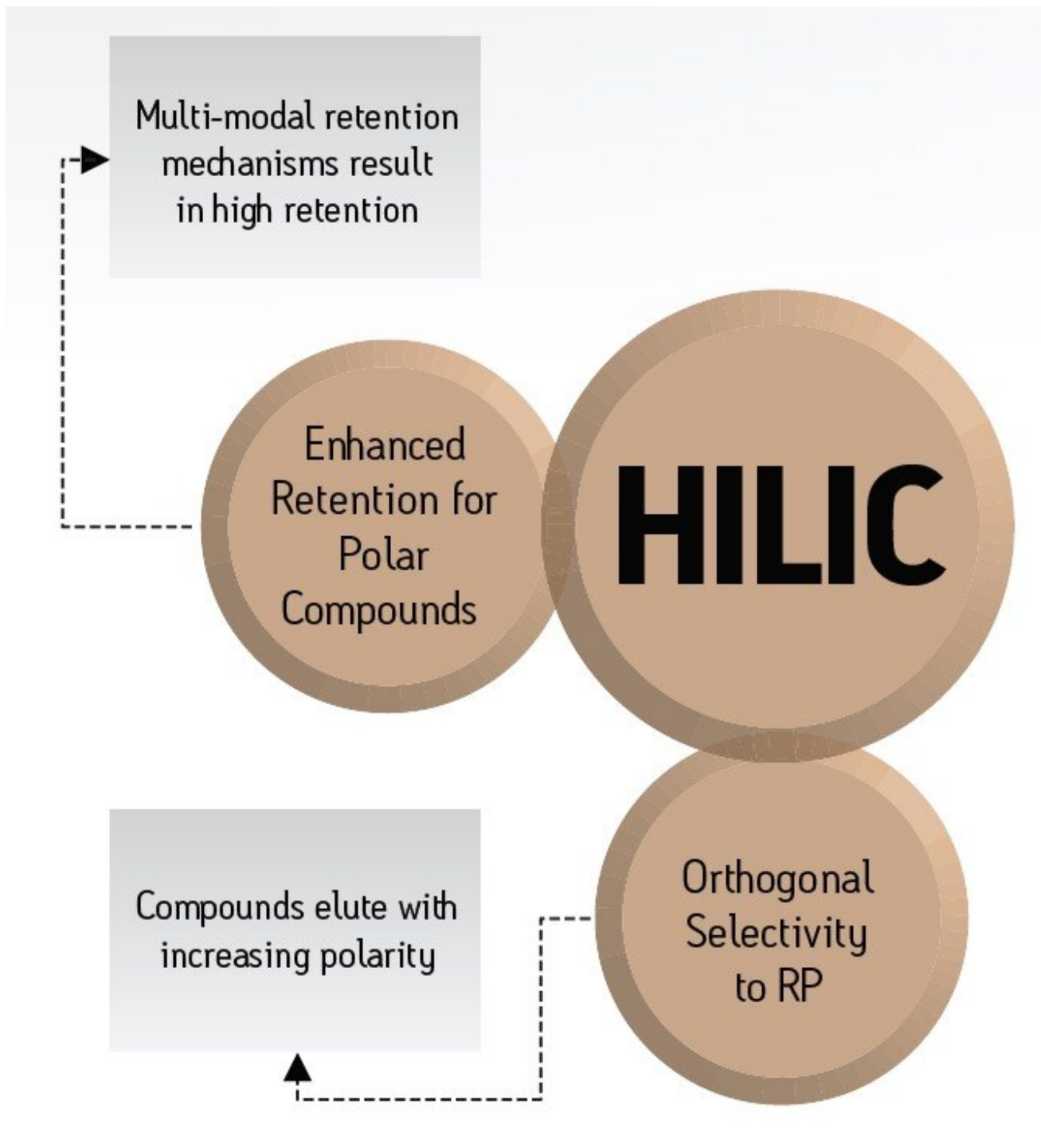


Figure 1. Benefits of HILIC SPE.

Results and Discussion

HILIC method robustness

In the case of GlycoWorks SPE, a silica-based aminopropyl sorbent was chosen from several tested due to its highly polar nature. This stationary phase readily and selectively retains polar compounds such as glycans. In addition, this sorbent possesses a weakly basic surface allowing the added potential to exploit ion exchange/repulsion properties.

The eluent pH and ionic strength can impact retention on this HILIC phase and cannot be ignored. For instance, as the ionic strength of the eluent is increased, ionic interactions between the stationary phase and the solutes are disrupted, resulting in ion exchange playing a lesser role in retention.¹

In addition, as the mobile phase pH is altered, the charge state of the stationary phase surface is impacted (by nature of the aminopropyl ligand and the base particles' silanol activity). At higher pH values the ionization of basic analytes and the aminopropyl ligand is reduced, however the ionization of the surface silanols is increased. Because of this, it is critical to choose an eluent that will have a fixed, stable pH every time an assay is performed. Method development taking into account all of these factors is crucial for successful assay reproducibility.¹

The first step to HILIC SPE is conditioning with aqueous mobile phase, which establishes a layer of polar solvent on the stationary phase surface. It is into this aqueous layer that the glycans will partition when they are loaded under low polarity solvent conditions. Subsequently, the adsorbed glycans are washed with solvent to ensure less polar compounds are removed from the sample. Thereafter, the glycans are eluted off the stationary phase with a strongly polar solution, in this case a high concentration of water with a buffer in order to minimize the ionic interactions. The use of ammonium salts of formic acid or acetic acid (ammonium formate or ammonium acetate) are preferentially used due to their volatility. Refer to the application note "Optimization of GlycoWorks HILIC SPE for the Quantitative and Robust Recovery of N-Linked Glycans from mAb-Type Samples" and one of its corresponding figures (Figure 2) for a demonstration on how an eluent for GlycoWorks HILIC SPE was optimized for the reproducible elution of 2-AB labeled glycans.³

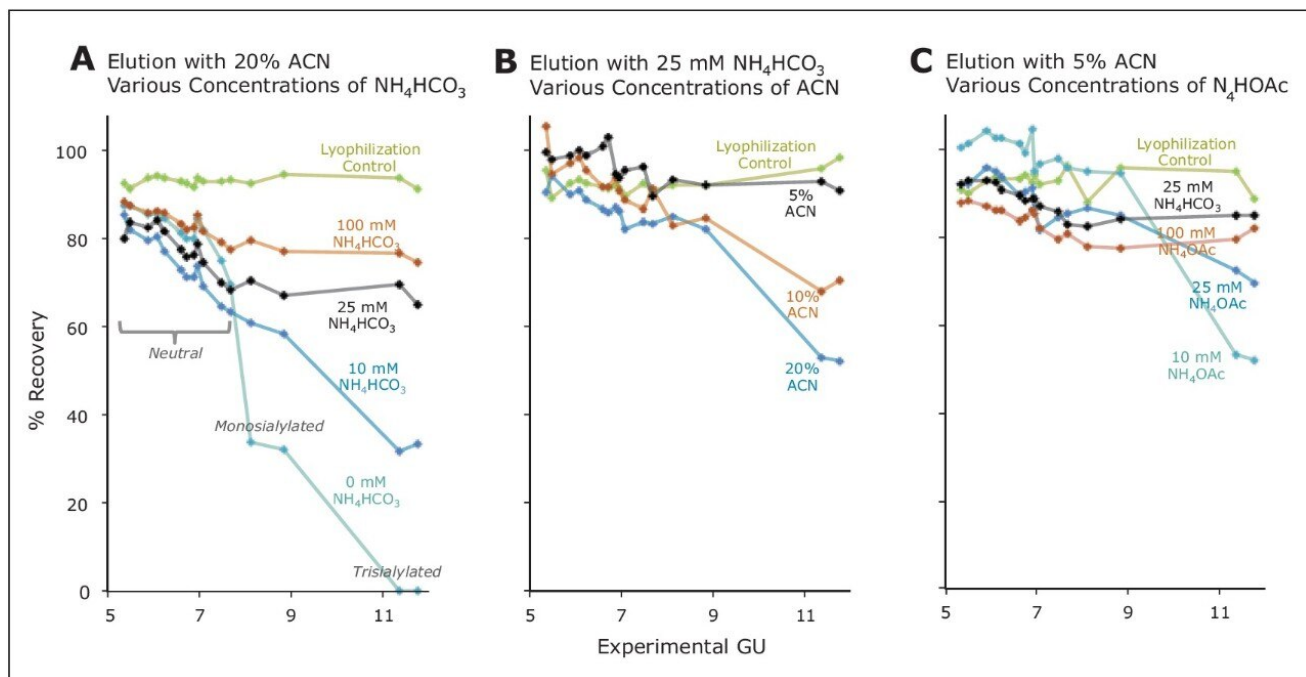


Figure 2. Recovery of 2-AB labeled N-glycans (Figure 2) from GlycoWorks HILIC SPE 96-well μ Elution Plates (30 pmol of glycans processed). Percent recoveries as a function of experimentally determined glucose units (GU) are shown for various elution conditions. Values are based on the average of three replicate analyses.

In this work, 2-AB labeled glycans were loaded onto a 96-well HILIC μ Elution plate according to the protocol provided in the GlycoWorks High-throughput Sample Preparation Kit Care and Use Manual. Various eluents were then employed for elution of the labeled glycans and recoveries for each major species in the test mixture were subsequently determined. These data were compared alongside the recoveries of the glycans from just the lyophilization and reconstitution steps that were performed after the HILIC SPE procedure in preparation of the samples for HILIC-FLR. By means of this development work, a 100 mM NH_4OAc , 5% ACN eluent was selected as the optimal elution condition, since it is a pH stable solution and it provided high as well as relatively unbiased analyte recoveries.

SPE robustness

Many times, due to the nature of solid phase extraction devices, especially in the case of micro-elution plates, well to well flow rate variation can occur. At times, it can be observed that one well will exhibit a faster flow than another. Such well-to-well flow rate differences can be further amplified by more viscous solvent such as highly

aqueous solvents. Other variables that can contribute to flow variability include improper seating of the plate on the vacuum manifold, introduction of air when pipetting into a well and changes in operating pressures when vacuum driven SPE is performed. Optimization of individual vacuum manifolds can be critical to achieving consistent well-to-well flow rates. Nevertheless, it is almost impossible to entirely eliminate well to well flow rate differences so the question was asked, what impact does this have on the resulting reproducibility of oligosaccharide recovery? If the method is robust, this mechanical variability should be inconsequential.

To this end, the GlycoWorks Care and Use protocol was employed along with the Dextran Calibration Ladder (PN 186006841) to test the impact of variable flow rates on sample recovery (GlycoWorks High-throughput Sample Preparation Kit Care and Use Manual).⁴ As an initial step, 500 μL of water was pulled through wells on a GlycoWorks HILIC SPE uElution plate. A vacuum setting of 5 inches of Hg was used to drive flow through one well at a time.

Meanwhile, the time to draw the 500 μL through each well was recorded, enabling a flow rate metric for each well to be determined. Sample was thereafter processed, without the use of any special practices. Figure 3A shows the measured flow rates. The color gradient denotes faster flow rates with darker colors and slower flow rates with lighter colors.

Figure 3B illustrates the fluorescence chromatograms obtained for oligosaccharide samples processed through wells with varying flow rate characteristics.

Overall, the GlycoWorks HILIC SPE plate exhibited less than a 3-fold variation in flow rate across a set of 48 wells when operated with a vacuum manifold (Figure 3A).

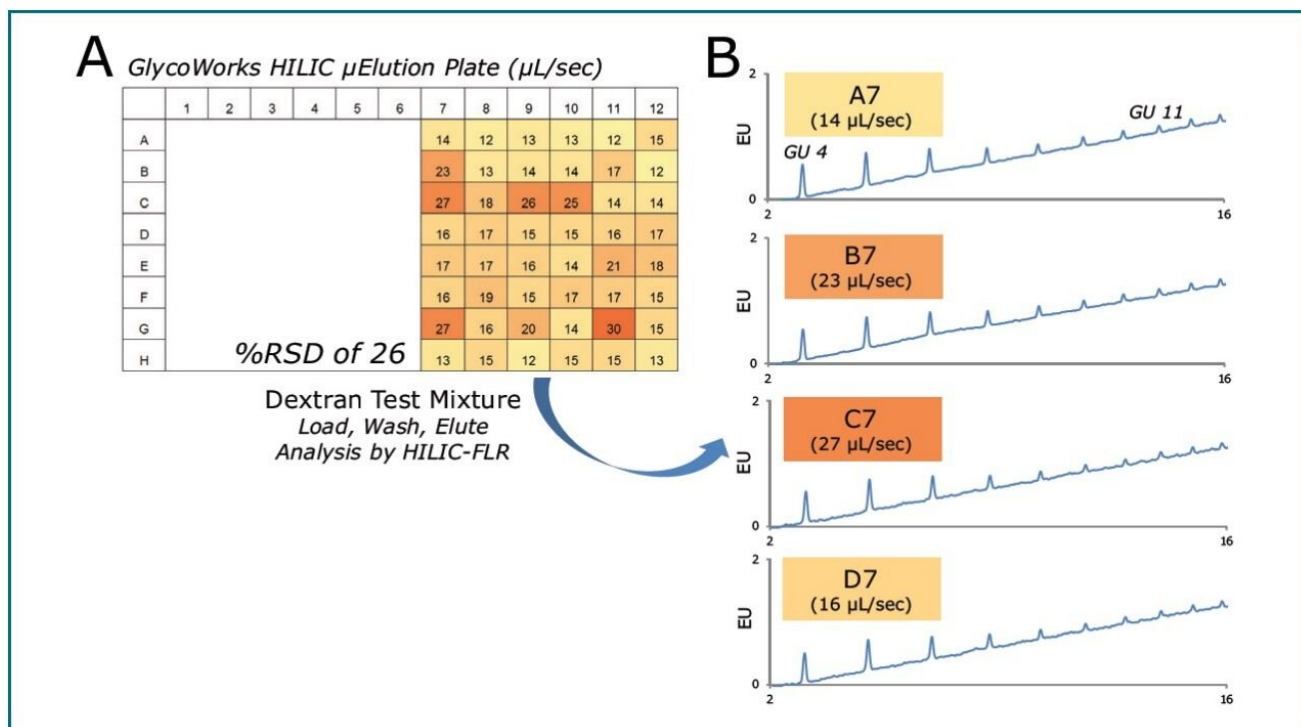


Figure 3. Well-to-well reproducibility testing of the GlycoWorks HILIC μ Elution Plate. (A) Flow rates ($\mu\text{L}/\text{sec}$) observed during an aqueous conditioning step. (B) HILIC-Fluorescence (FLR) chromatograms obtained using eluate of the dextran test mixture from wells A7, B7, C7, and D7.

When these data were viewed in the context of oligosaccharide recovery, however, it became clear that any differences that do exist in flow rate characteristics from well-to-well do not negatively impact recovery, whether absolute or relative, as demonstrated in Figure 4.

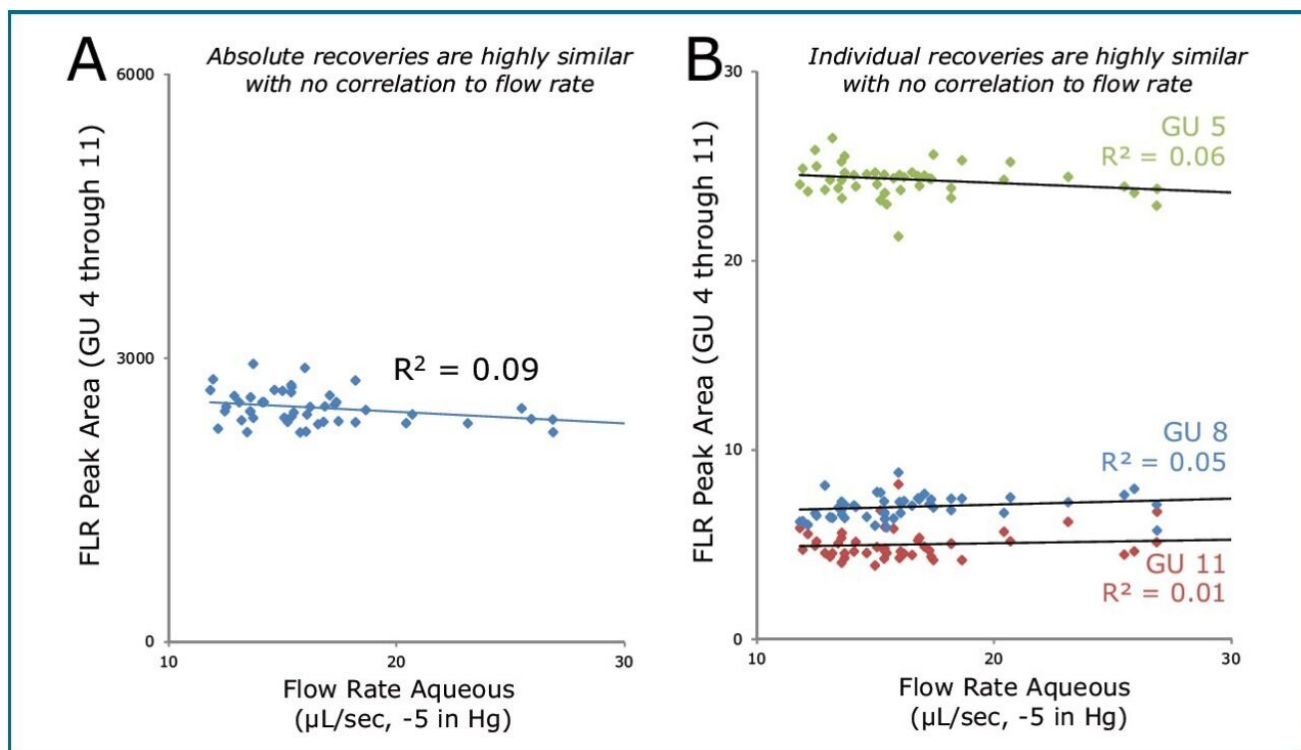


Figure 4. Well-to-well reproducibility of the GlycoWorks HILIC μ Elution Plate. (A) Combined fluorescence peak area for dextran test mixture eluted from 48 different wells displayed as a function of flow rate. (B) Peak areas of Glucose Unit (GU) 5, 8, and 11 from the test mixture plotted as a function of flow rate.

Conclusion

GlycoWorks HILIC SPE offers a robust, reliable solution for cleanup and concentration of glycans from complex matrices. Its application during the sample preparation of 2-AB labeled glycans helps ensure that an analyst reliably obtains successful results when studying protein glycosylation.

References

1. Comprehensive Guide to HILIC - Hydrophilic Interaction Chromatography. Waters Primer 715002531.
2. Wuhler, M.; de Boer, A. R.; Deelder, A. M., Structural glycomics using hydrophilic interaction chromatography (HILIC) with mass spectrometry. *Mass Spectrom Rev* 2009, 28 (2), 192–206.
3. Optimization of GlycoWorks HILIC SPE for the Quantitative and Robust Recovery of N-Linked Glycans from mAb-Type Samples. Waters Application Note 720004717EN.
4. GlycoWorks High-throughput Sample Preparation Kit Care and Use Manual. Waters User Manual 715004079.

Featured Products

720005116, September 2014

©2019 Waters Corporation. All Rights Reserved.