

アプリケーションノート

## Polar Basic Drugs in Environmental Samples; Improved Analysis Using a New High Efficiency UPLC Column for HILIC

---

Michael S. Young, Mia Summers

日本ウォーターズ株式会社



---

Abstract

The purpose of this application note is to demonstrate the CORTECS UPLC HILIC Column for determination of highly polar basic compounds. In this application, a number of these compounds are determined in a spiked river water sample. Sample preparation was performed using the EPA 1694 method modified for use with a smaller sample volume (100 mL rather than 1000 mL) and a smaller Oasis HLB Cartridge (150 mg compared with 1000 mg). The same enrichment factor was maintained and similar performance was observed compared with the protocol given in method 1694.1 Sample preparation time was reduced from about 4 hours to about 1 hour.

## Benefits

- Improved separation for EPA 1694 basic compounds compared with prior HPLC methodology
- Solid-core particle UPLC Column technology to maximize efficiency and speed compared with fully-porous particle columns

---

## Introduction

Highly polar basic compounds, such as albuterol, can be determined in environmental water samples by ion-pairing reversed-phase liquid chromatography or by HILIC (Hydrophilic Interaction Liquid Chromatography). Although volatile ion-pairing reagents are available for use with LC-MS, significant reduction in MS response is usually observed compared with response with no ion-pairing reagent. Therefore the HILIC approach with no ion-pairing reagents is preferred for trace-level LC-MS analysis.

The purpose of this application note is to demonstrate the CORTECS UPLC HILIC Column for determination of highly polar basic compounds. In this application, a number of these compounds are determined in a spiked river water sample. Sample preparation was performed using the EPA 1694 method modified for use with a smaller sample volume (100 mL rather than 1000 mL) and a smaller Oasis HLB Cartridge (150 mg compared with 1000 mg). The same enrichment factor was maintained and similar performance was observed compared with the protocol given in method 1694.<sup>1</sup> Sample preparation time was reduced from about 4 hours to about 1 hour.

---

## Experimental

### UPLC conditions

System: ACQUITY UPLC

Column: CORTECS UPLC HILIC, 2.1 x 100 mm, 1.6 µm

Injection volume: 30 µL

Temperature: 30 °C

Mobile phase A: Ammonium Acetate Buffer (18 mM acetic acid/13 mM ammonium acetate)

Mobile phase B: Acetonitrile

Flow rate: 0.45 mL/min

Gradient: See Table 1

*The ACQUITY UPLC® Columns Calculator*  
 was used to convert the original HPLC  
 conditions to UPLC conditions

### HPLC

### UPLC

Time (min)	Flow (mL/min)	%A	%B	Curve	Time (min)	Flow (mL/min)	%A	%B	Curve
Initial	0.250	2.0	98.0	Initial	Initial	0.600	2.0	98.0	Initial
5.00	0.250	30.0	70.0	6	2.08	0.600	30.0	70.0	6
12.00	0.250	30.0	70.0	6	5.00	0.600	30.0	70.0	6
12.50	0.250	2.0	98.0	6	5.20	0.600	2.0	98.0	6
<b>16.00</b>	0.250	2.0	98.0	6	<b>6.67</b>	0.600	2.0	98.0	6

Table 1. Gradient conditions for HPLC (left) and UPLC (right); Note total run time of 16 minutes for HPLC, 6.67 minutes for UPLC.

### MS conditions

Instrument: Xevo TQ MS

Mode:	Electrospray positive (ES+)
Source temp.:	150 °C
Desolvation temp.:	500 °C
Desolvation gas:	1200 L/hr
Collision gas (Argon):	0.18 mL/min
Cone gas:	30L/hr

### MRM transitions

Compound	MRM( <i>m/z</i> )	Cone(V)	Collision(eV)
Cimitidine	253.0>116.9	30	20
	253.0>158.9	30	15
Clenbuterol	277.0>167.9	24	26
	277.0>202.9	24	18
Albuterol	240.2>148.0	28	15
	240.2>222.0	28	10
Metformin	130.9>59.9	25	15
	130.9>71.9	25	20
Ranitidine	315.0>129.9	25	25
	315.0>175.9	25	20

### Sample preparation

The surface water sample (100 mL taken from a local river) was adjusted to pH 11 with concentrated ammonium hydroxide. An Oasis HLB Cartridge (6 cc, 150 mg) was conditioned with 2 mL methanol and equilibrated with 2 mL pH 11 water. The sample was loaded at approximately 5 mL/min using a vacuum manifold. After loading, the cartridge was washed with 2 mL of pH 11 water and was eluted with 1 mL methanol followed by 2 mL of 2% formic acid in methanol. The eluent was evaporated and reconstituted in 0.4 mL 20:80 methanol/acetonitrile.

## Results and Discussion

Figure 1 shows an LC-MS/MS chromatogram obtained from a spiked sample of river water. Figure 2 shows a comparison of the same sample analyzed by UPLC and by HPLC. The CORTECS UPLC HILIC Column gave much improved resolution for metformin and ranitidine in less than half the time.

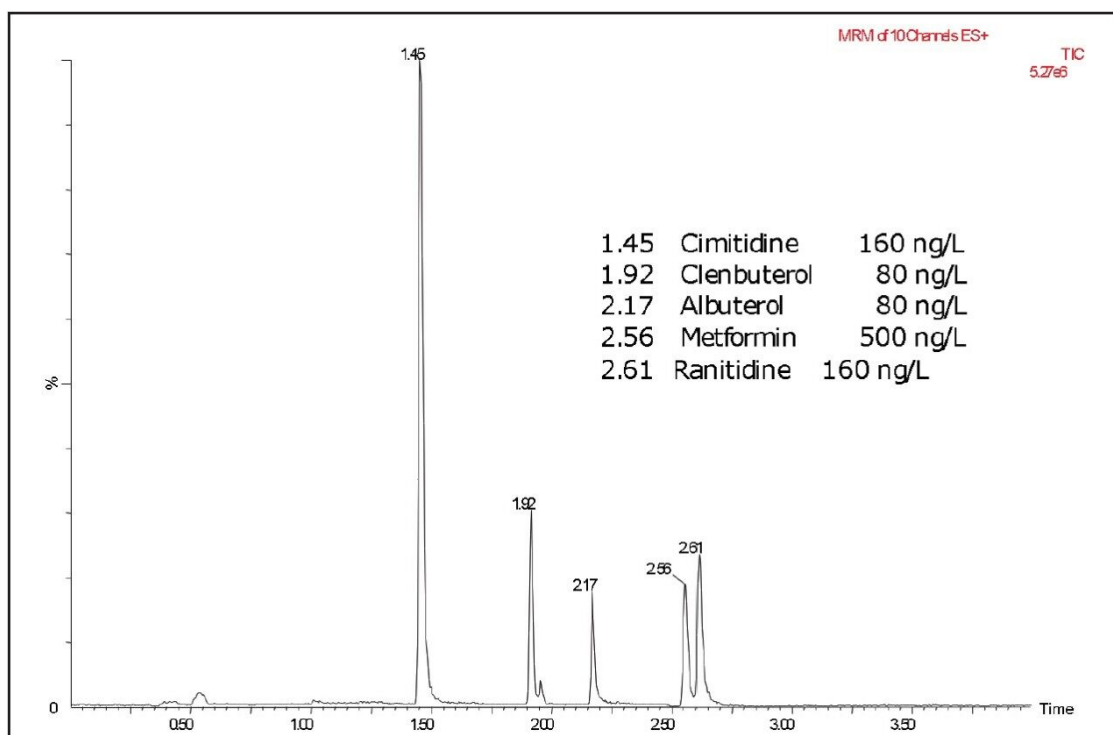


Figure 1. UPLC-MS analysis; five basic drugs in surface water at the concentrations shown.

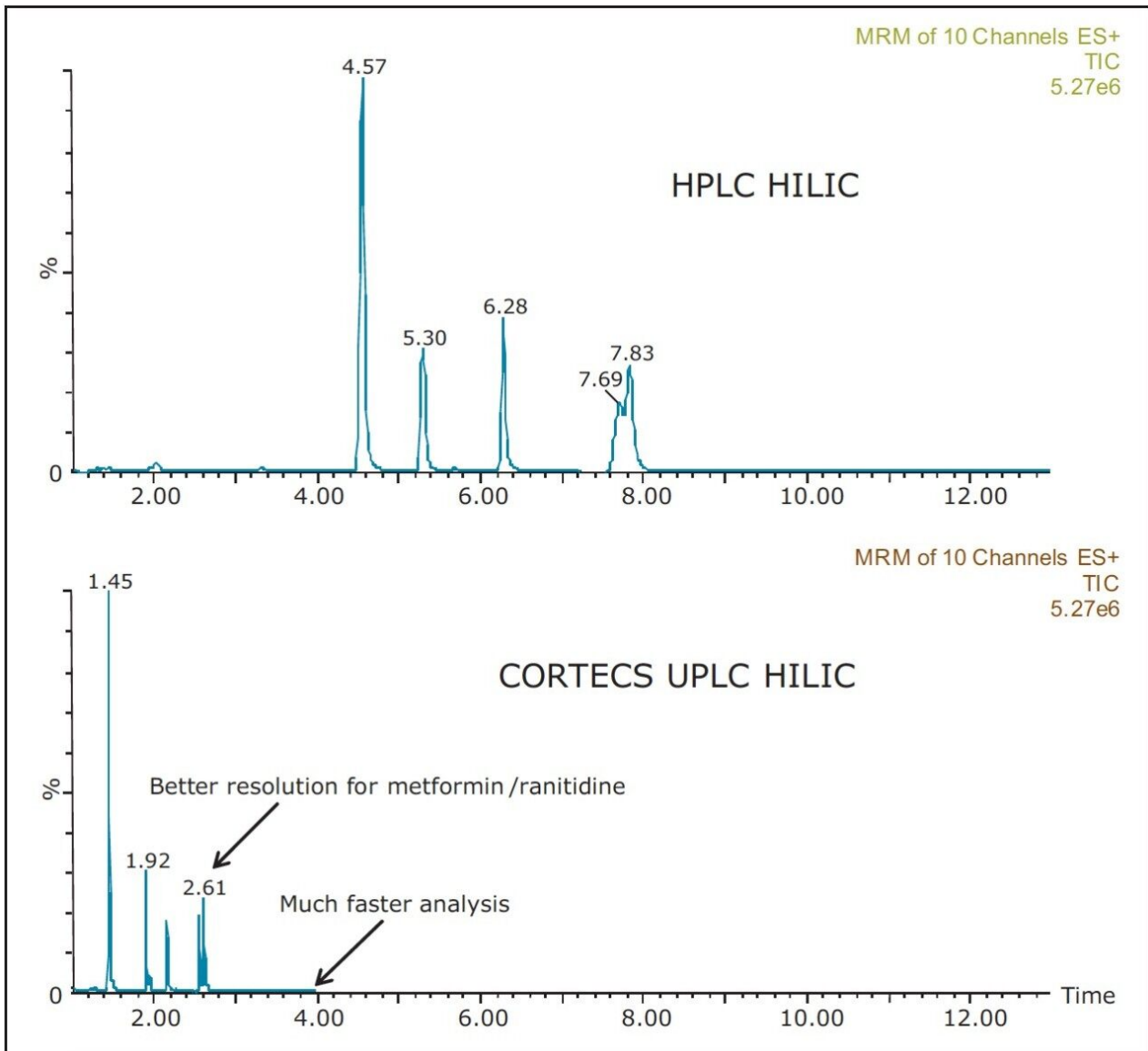


Figure 2. Comparison of HPLC (top) vs UPLC (bottom) for the analysis of five basic drugs in surface water

## Conclusion

- Better resolution was achieved using the CORTECS UPLC Column compared with a traditional HPLC column
- Analysis time using the CORTECS UPLC Column was reduced by 60% compared with a traditional HPLC column

- CORTECS UPLC Columns provide exceptional efficiency and throughput based on advanced solid-core particle and column packing technology
- 

## References

1. EPA Method 1694
- 

## Featured Products

ACQUITY UPLC System <<https://www.waters.com/514207>>

720005141, August 2014