



Extraction of Testosterone from Serum using Oasis Max μ Elution Plates for Clinical Research

Dominic Foley, Lisa J. Calton

Waters Corporation

For research use only. Not for use in diagnostic procedures.

This is an Application Brief and does not contain a detailed
Experimental section.

Abstract

This application brief demonstrates a highly selective solid-phase extraction (SPE) technique with Oasis MAX μ Elution Plates for the extraction of testosterone from serum samples for LC-MS/MS analysis in clinical research.

Benefits

The Oasis MAX μ Elution Plate enables optimized analytical sensitivity and selectivity for the analysis of testosterone in serum for clinical research.

Introduction

To determine the pharmacokinetic, bioavailability, and safety of new formulations of testosterone gels in clinical research, accurate and precise quantification of testosterone at low physiological concentrations is required.¹

Historically, testosterone has been analysed by direct immunoassay methods. However, it has been reported that these immunoassay methods can suffer from a lack of specificity due to the cross reactivity of structurally similar steroid hormones i.e., dihydrotestosterone. This results in greater imprecision and inaccuracy, most notably at the lower concentrations of testosterone found in serum samples. LC-MS/MS provides a solution to this problem by providing a platform to discern between similar steroids through the use of chromatographic separation and selective MRM mass spectrometry.

Additional selectivity can also be obtained through the use of sample preparation prior to analysis. The use of sample preparation can provide orthogonal selectivity to the LC-MS/MS dimension of the method. Potential interferences found in the MRM trace of the analyte of interest can be removed with selective sample preparation techniques such as mixed mode SPE.

Experimental

Sample preparation and LC-MS/MS analysis

Serum samples were diluted with internal standard, ammonia, zinc sulphate, methanol, and water. Following centrifugation, sample supernatant was loaded onto the 96-well Oasis MAX μ Elution Plate (PN:186001829) following conditioning and equilibration. A high pH wash was performed with ammonia in 20% methanol and samples were eluted with methanol followed by water.

20 μ L of each extracted sample was injected on an ACQUITY UPLC I-Class/Xevo TQD utilizing mobile phases consisting of 2 mM ammonium acetate and 0.1% formic acid in water and methanol. Separation was performed on an ACQUITY UPLC HSS C₁₈ SB Column (PN:186004118). The MRM transitions used for this analysis were m/z 289.2 for the testosterone precursor ion and m/z 96.9 and 109.0 for the quantifier and qualifier product ions respectively. Testosterone-¹³C₃ was used as the internal standard.

Results and Discussion

In this technology brief, an Oasis MAX μ Elution Plate was successfully employed for the selective extraction of testosterone from serum. This chemistry provides mixed-mode interaction which utilizes both hydrophobic and anion exchange functionality. The added selectivity of this sorbent is more proficient at removing interferences than conventional reversed-phase SPE.

The additional selectivity provided by the Oasis MAX chemistry compared to other extraction techniques, provides enhanced analytical sensitivity for ESI MS analysis of testosterone. This is observed in the extraction and quantification of testosterone in serum using optimized Oasis MAX μ Elution, Oasis HLB μ Elution, and protein precipitation extraction protocols. The largest S/N ratio observed for the quantifier ion of testosterone was obtained using the Oasis MAX μ Elution Plate for the sample preparation (Figure 1).

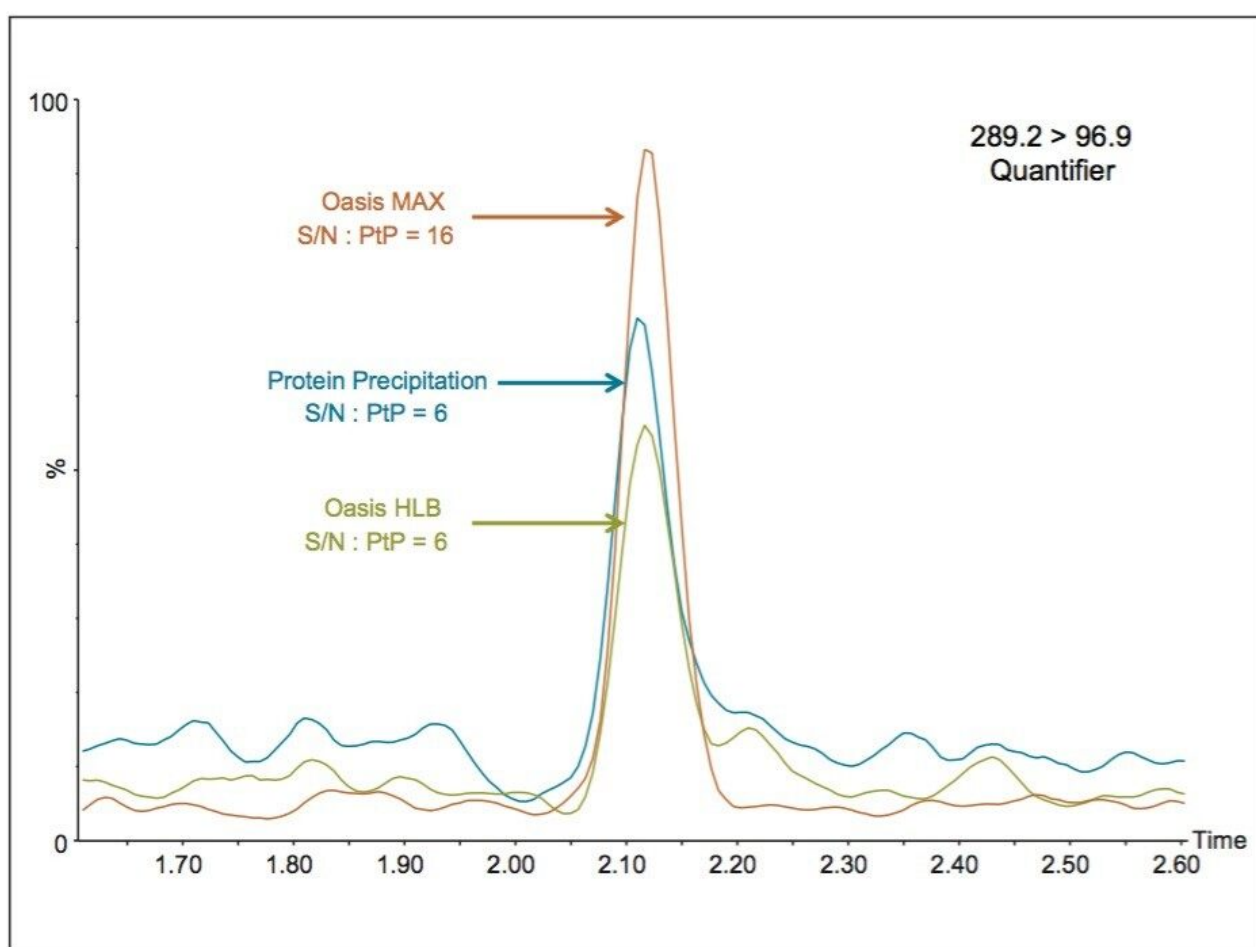


Figure 1. Testosterone quantifier MRM chromatograms of extracted serum samples using an Oasis MAX μ Elution Plate, Oasis HLB μ Elution Plate, and protein precipitation. Samples were extracted in triplicate and the mean S/N value is shown. S/N is calculated on the raw data using peak to peak at ± 2 SD.

The Oasis MAX μ Elution Plate also removes an interference clearly present in the qualifier trace of the same serum samples, as can be seen in Figure 2. The same interference is also evident in Figure 1. This selectivity improves the accuracy of the ion ratios observed between the quantifier and qualifier ions as well as peak integration reproducibility.

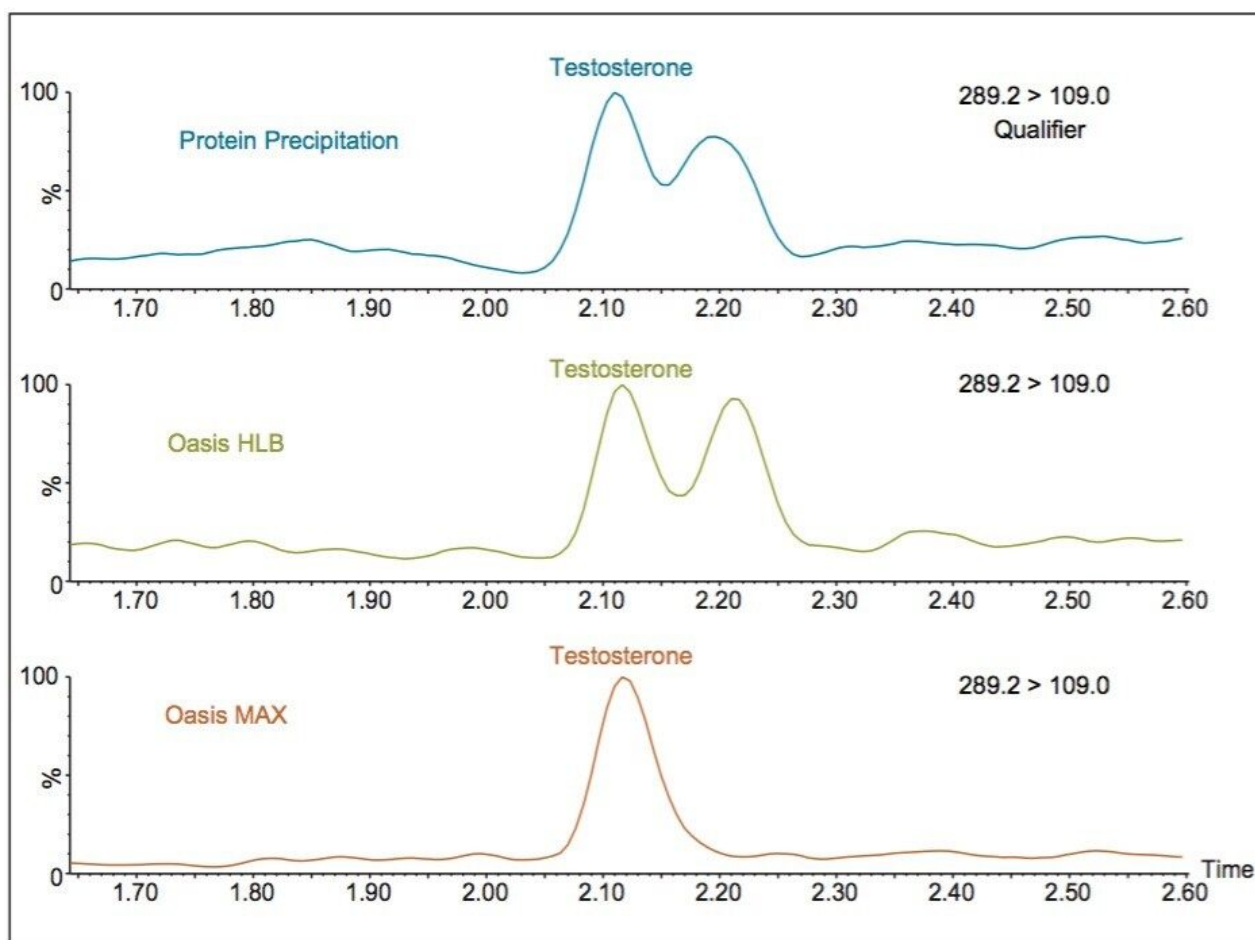


Figure 2. Qualifier MRM chromatograms for extracted serum testosterone samples using Oasis MAX μ Elution Plate, Oasis HLB μ Elution Plate, and protein precipitation.

Over a calibration range of 0.17–51 nmol/L for testosterone the precision of the method was determined by extracting and quantifying three replicates of tri-level QC material on two occasions per day over five separate days ($n = 30$). The results of these experiments are seen in Table 1, where total precision and repeatability is $\leq 5.0\%$ RSD.

Compound	Total QC precision (RSD)			QC repeatability (RSD)		
	Low	Mid	High	Low	Mid	High
Testosterone	5.0%	4.4%	4.3%	3.1%	3.0%	1.4%

Table 1. Total precision and repeatability for the analysis of testosterone in serum at low (0.51 nmol/L), mid (3.4 nmol/L), and high (34 nmol/L) concentration points.

Conclusion

A LC-MS/MS method for the analysis of testosterone for clinical research has been developed. Sample preparation was performed using an Oasis MAX 96-well μ Elution Plate for the extraction of testosterone from serum. The benefits of this method include:

- Highly selective sample preparation, leading to a nearly 3 fold improvement in S/N relative to other evaluated techniques.
- Removal of interferences observed at low physiological concentrations of testosterone, which enables analytically sensitive analysis of testosterone in serum (LLOQ 0.17 nmol/L).
- Excellent reproducibility across the calibration range ($\leq 5.0\%$ RSD).

References

1. Miller J *et al.* Pharmacokinetics and Relative Bioavailability of Absorbed Testosterone After Administration of a 1.62% Testosterone Gel to Different Application Sites in Men With Hypogonadism. *Endocr Pract.* 2011 Jul-Aug;17(4):574-583. doi: 10.4158/EP10192.OR.

Featured Products

ACQUITY UPLC I-Class PLUS System <<https://www.waters.com/134613317>>

Xevo TQD Triple Quadrupole Mass Spectrometry <<https://www.waters.com/134608730>>

720005224, December 2014

©2019 Waters Corporation. All Rights Reserved.