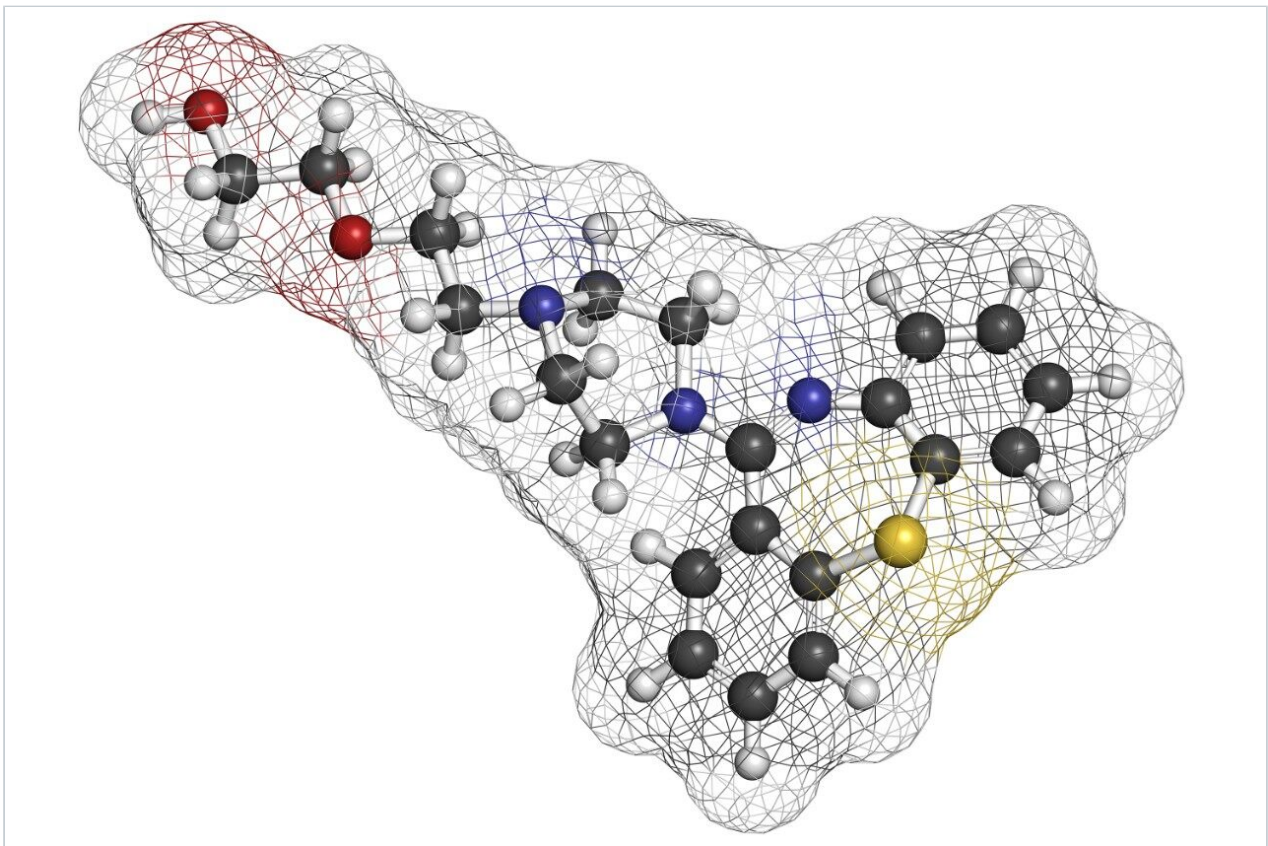


응용 자료

Identification and Characterization of an Isolated Impurity Fraction: Analysis of an Unknown Degradant Found in Quetiapine Fumarate

Michael D. Jones, Xiang Jin Song, Robert S. Plumb, Peter J. Lee, Andrew J. Aubin

Waters Corporation



Abstract

This application note demonstrates the application of high-resolution mass spectrometry to generate exact mass MS/MS fragment analysis data in conjunction with the use of software to automatically identify product ion fragments.

Introduction

Impurity profiling is a critical part of the drug development process. Structural elucidation of unknown substances such as synthetic impurities is a key factor to refining pharmaceutical drug potency and safety attributes.¹ Success in solving these very complicated and challenging structural puzzles has been facilitated by evolutions in LC and MS instrumentation; however it still requires a high level of experience to solve these analytical problems.

Typically MS/MS data from a triple quadrupole mass spectrometer is interrogated for structural elucidation in impurity profiling, in order to provide fragmentation spectra. However, using MS/MS analysis alone – particularly nominal mass spectra – may not provide sufficient specificity to determine the analyte structure. Complementing MS/MS with time-of-flight (ToF) data acquisition provides elemental composition information. For small molecules, this significantly improves the elucidation process since it significantly reduces the number of possible elemental compositions.

Quetiapine (Figure 1) is an atypical antipsychotic that has been shown to form more than 20 impurities/degradation products.² In this application note, we demonstrate the application of high-resolution mass spectrometry to generate exact mass MS/MS fragment analysis data in conjunction with the use of software to automatically identify product ion fragments. This software applies a series of novel, chemically-intelligent algorithms to elucidate an unknown impurity peak of quetiapine that was previously isolated by mass-directed autopurification.³

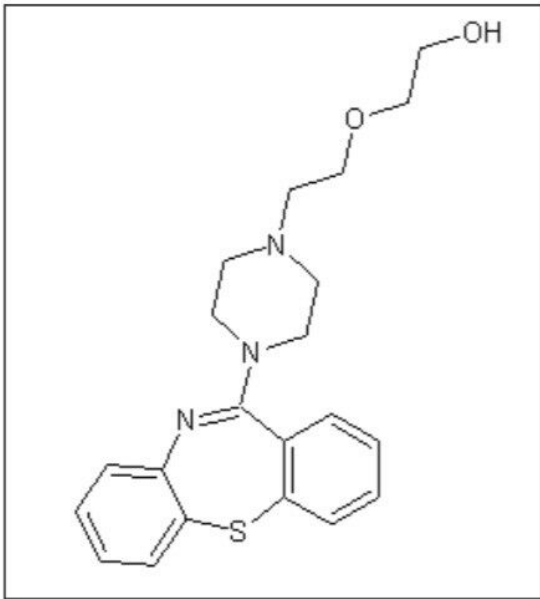


Figure 1. Structure of quetiapine, $[M+H] = 384.1746$.

Experimental

LC conditions

LC system:	ACQUITY UPLC
Column:	ACQUITY UPLC BEH C ₁₈ Column, 2.1 x 50 mm, 1.7 μm
Column temp.:	65 °C
Flow rate:	800 μL/min
Mobile phase A:	20 mM ammonium bicarbonate, pH 9.0

Mobile phase B: Acetonitrile
Gradient: 5 to 95% B for 3.0 min

MS conditions

MS system: Waters SYNAPT MS System
Ionization mode: ESI positive
Capillary voltage: 1.5 kV
Cone voltage: 15 V
Desolvation temp.: 350 °C
Desolvation gas: 650 L/Hr
Source temp: 120 °C
Acquisition ranges: 100 to 1000 *m/z* for MS 50 to 600 *m/z* for MS/MS
Collision energies: Ramp from 15 to 30
Lock mass: 300 pg/μL
leucine/enkephalin flow at 50 μL/min

Data management

MassLynx 4.1 Software with MassFragment

Results and Discussion

In a previous application note, forced degradation was employed to maximize the amount of an impurity formed during hydrolytic conditions to generate a sufficient mass of impurity for subsequent NMR analysis.² The peak giving rise to the m/z 402 ion was isolated using preparative chromatography and mass-directed fraction collection. Although the desired substance was collected, the compound's structure remained unknown.

Importance of mass accuracy for determination of elemental composition

Instrumentation capable of producing high mass accuracy information is an essential tool in the area of impurity determination. Modern Q-ToF technology makes the acquisition of sub-5-ppm mass accuracy data readily achievable. This, coupled with fast data acquisition speeds that allow the detection of the narrow peaks produced by UPLC chromatography, make it an ideal tool for impurity identification.

The sample was analyzed on the SYNAPT MS System to obtain accurate mass MS data and hence elemental composition determination. The impurity had an observed accurate mass of m/z 402.1838. This is an addition of 18.0092 amu to that of quetiapine (m/z 384.1746).

The high mass accuracy of the SYNAPT MS System produced a short list of possible elemental compositions. The potential elemental composition list was further reduced by a series of filters. These filters included the ability to limit molecular formulas based on:

- Elemental symbols and limits (e.g., Nitrogen, 0 to 5)
- Mass accuracy tolerance (ppm or mDa)
- i-FIT isotopic pattern
- Electron state (odd, even, or both)

The Elemental Composition browser returned three possible molecular formulas (Figure 2).

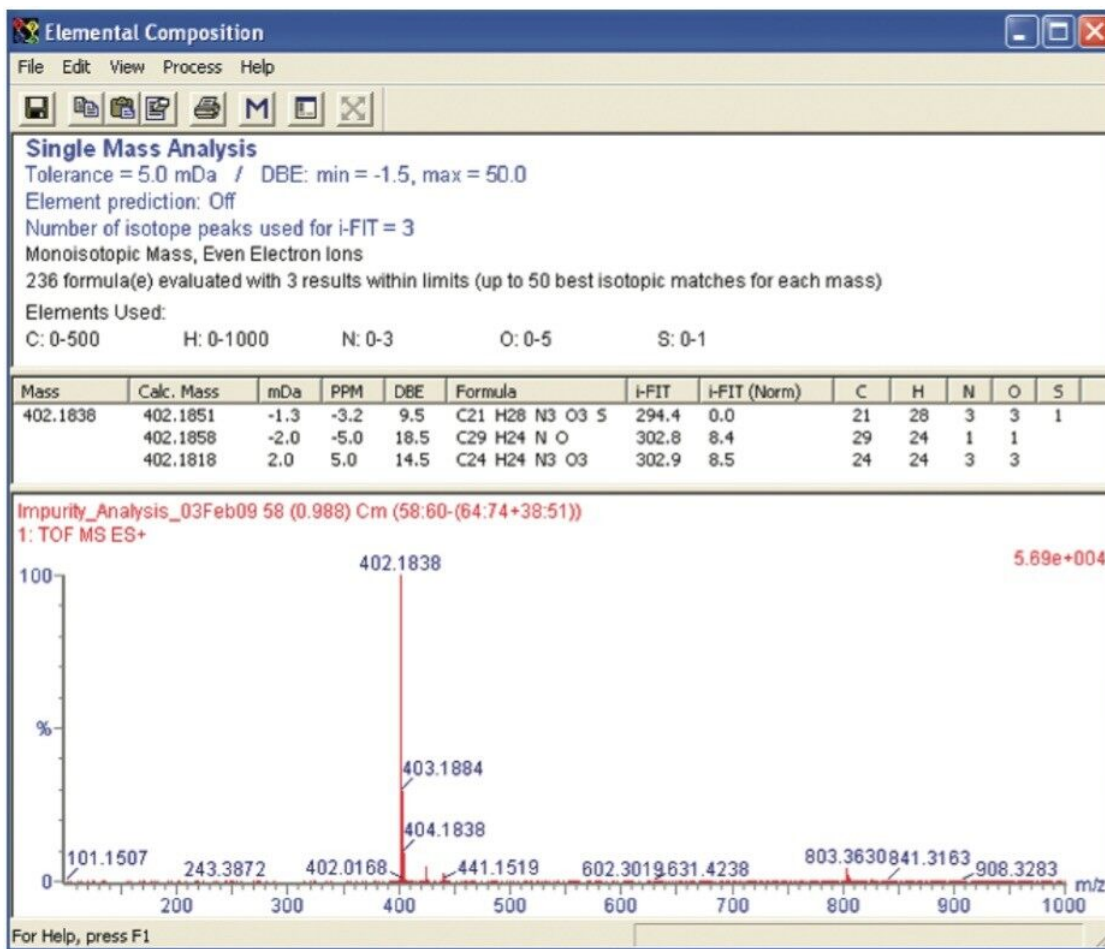


Figure 2. Elemental composition for impurity m/z 402.1838. The double bond equivalence (DBE) value, low i-FIT value, and low mDa results support the "first hit" formula.

The Elemental Composition calculator was set to order the list of proposed elemental compositions according to the fit of the experimental data to the theoretical isotope distribution using i-FIT. The i-FIT criterion calculated a molecular formula of C₂₁H₂₈N₃O₃S as the best fit. The double bond equivalence (DBE) reported a value of 9.5 and a mass error of -1.3 mDa.

Possible structures that fit the elemental compositions based on the mass accuracy data for 402.1838 include:

- Oxidation of the sulfur on quetiapine structure in conjunction with reduction of the C=N double bond in the seven member ring (Figure 3a)
- Cleavage of the C=N bond producing a nitroso-based structure (Figure 3b)
- Cleavage of the C=N bond producing a ketone- and amine-based structure (Figure 3c)

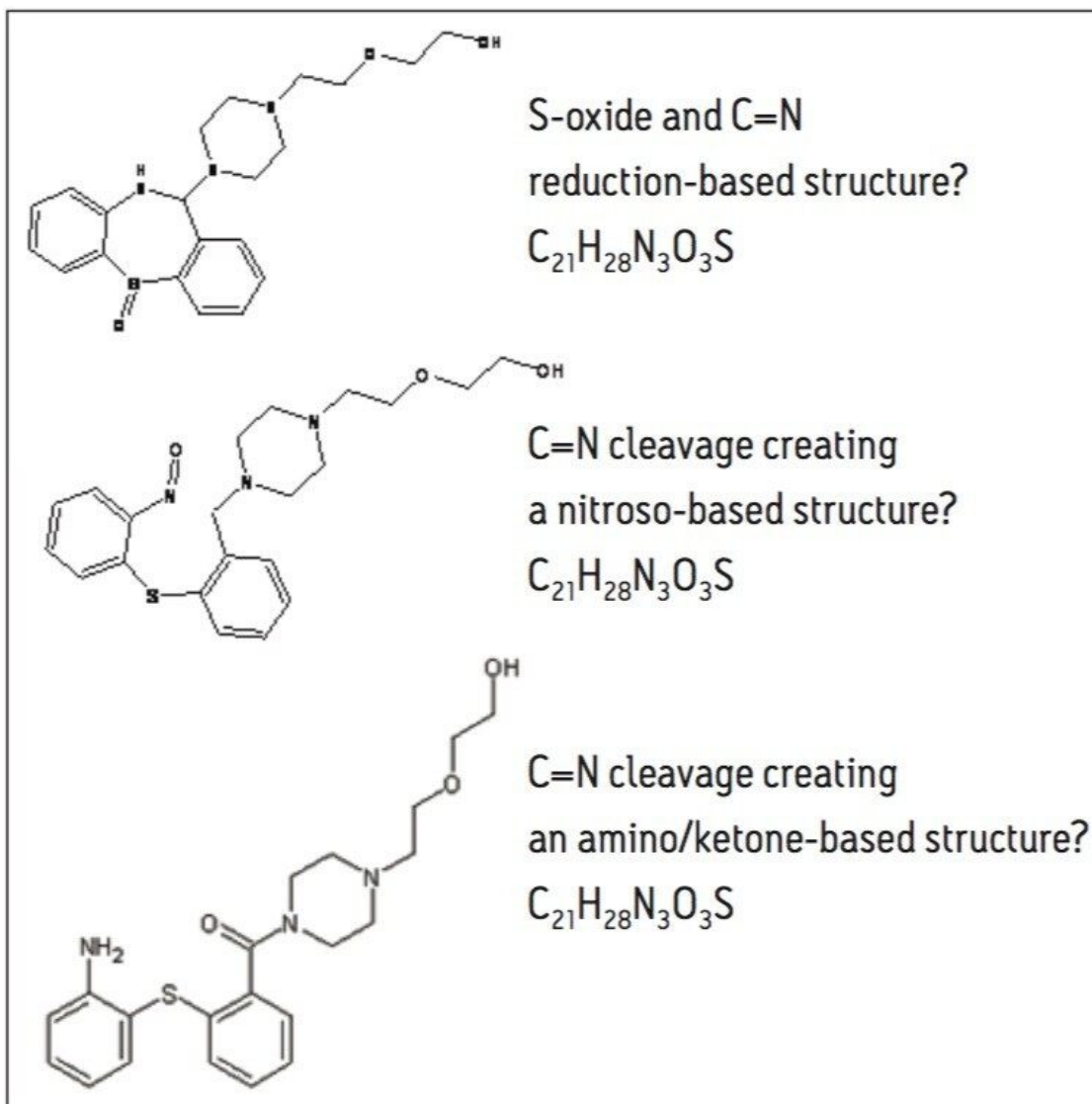


Figure 3. Structures that fit the m/z 402.1838 mass accuracy results reported in the elemental composition.

Examining the forced degradation reaction that enriched the production of the impurity suggests the most probable structure is as shown in Figure 4. Other chemical structures could be proposed based on the accurate mass information of the base m/z alone. Knowing the reaction that produced the addition of 18 amu aids the elucidation decision process.

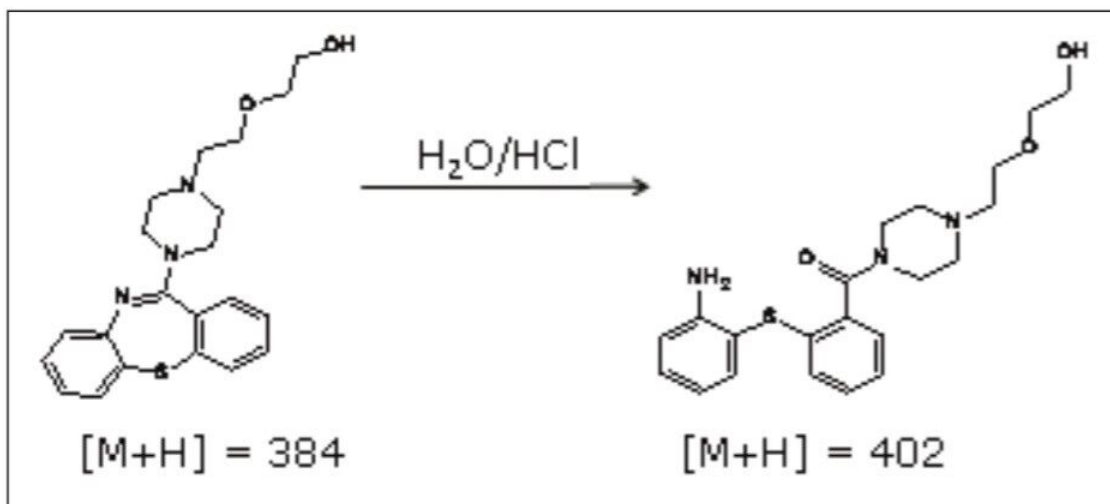


Figure 4. Proposed hydrolysis reaction of quetiapine.

Accurate mass MS/MS analysis

A careful examination of the fragmentation patterns obtained during related impurity analysis allows the impurities' structural information to be associated with that of the active pharmaceutical ingredient (API). The key to informative MS/MS data is the quality of the fragmentation spectra. The quality of MS/MS spectra assessed in small-molecule analysis is based on the number of fragments and spatial location of the fragments, thus providing added structural informative value for elucidation determination.

The SYNAPT MS Systems performs both MS^E and traditional MS/MS experiments. MS^E experiments allow for simultaneous high and low collision energy data to be collected with one injection. Traditional MS/MS experiments provide additional information in the form of product ion scans, precursor ion scans, and common neutral loss scans. An accurate mass MS/MS product ion scan of 402.1838 was performed to evaluate the fragmentation pattern of the isolated impurity to further support the proposed structure shown in Figure 3c (Figure 5). The fragments produced are most likely associated to cleavage of the seven-member ring that differentiates the three unknown impurities' proposed structures.

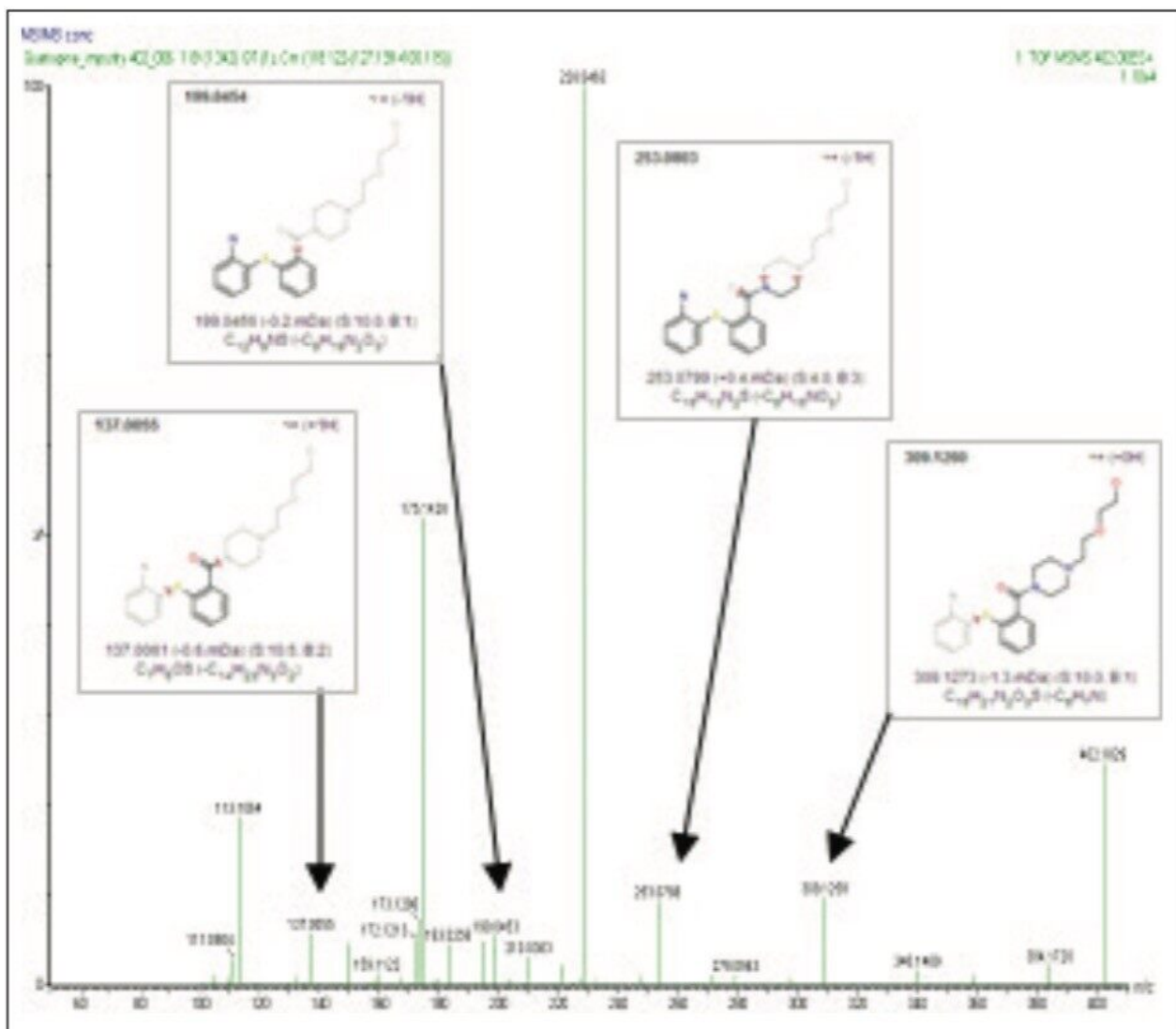


Figure 5. Fragment analysis following the hypothesis of the amino/ketone based structure as the unknown impurity highlighted with MassFragment results.

The key structural fragments that added greater confidence in differentiating amine/ketone-based structures to that of the alternatively-proposed structures were the m/z 137.0063, m/z 199.0454, m/z 228.0464, m/z 253.0803, and m/z 309.1260 ions.

MassFragment for structural elucidation

Structural elucidation requires an expert knowledge of chemistry and bond reactions. MassFragment is a software solution that is capable of automatically identifying product ion fragments using a series of chemically-intelligent algorithms. This approach is based on systematic bond disconnection of the precursor

structure instead of the traditional rule-based approach. MassFragment was used to help visualize the correlation of the product ion data with possible structural assignments for the observed fragment ions (Figure 6).

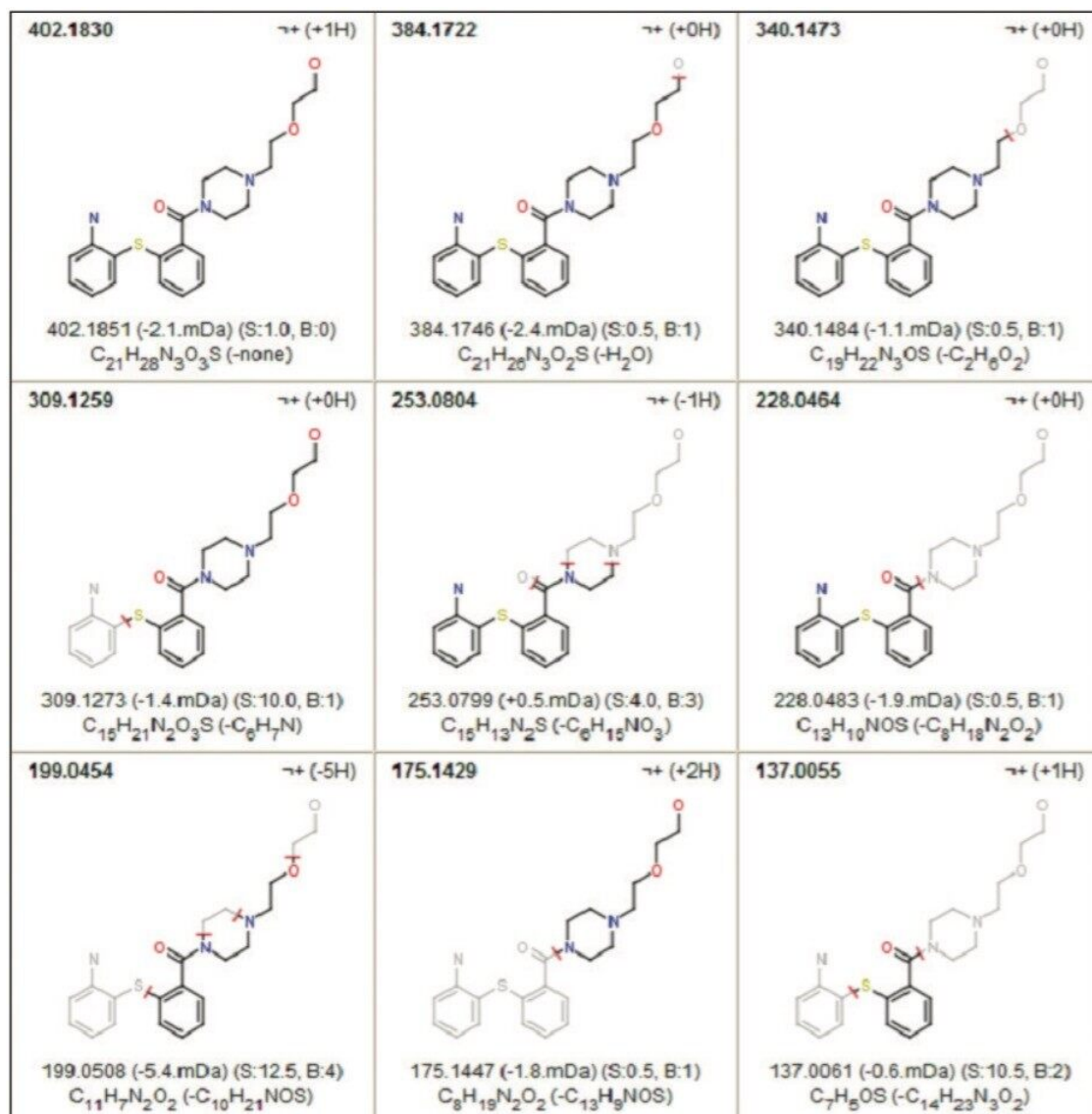


Figure 6. MassFragment results for the structure proposed in Figure 3c (amino/ketone-based).

MassFragment increases our confidence in the MS/MS fragment analysis of the proposed structure in Figure 3c. The proposed structures were drawn and saved as *.mol files. Each *.mol file was loaded separately into MassFragment to be structurally correlated with the spectra in Figure 5. The MassFragment results ruled out the proposed nitroso-based and S-oxide based structures.

The fragment ion m/z 137.0063 was observed in the MS/MS spectra in Figure 5. The MassFragment reports for the S-oxide based structure and the amino/ketone-based structure observed the ion fragment m/z 137.0063 and displayed possible structures. MassFragment was not able to report a structure for this particular fragment ion when the nitroso-based precursor structure was loaded into MassFragment (Table 1).

Daughter (Da)	Mass (Da)	Mass error (mDa)	Formula	DBE	Δ Formula	Structure(s), score & H-deficit
137.0055	137.0061	-0.6	C ₇ H ₅ OS	5.5	C ₁₄ H ₂₂ N ₃ O ₂	none
	137.0048	+0.7	C ₅ H ₃ N ₃ S	6	C ₁₆ H ₂₄ O ₃	none
	137.0027	+2.8	C ₁₀ HO	10.5	C ₁₁ H ₂₆ N ₃ O ₂ S	none
	137.0021	+3.4	C ₂ H ₅ N ₂ O ₃ S	1.5	C ₁₉ H ₂₂ N	none
	137.0113	-5.8	C ₆ H ₃ NO ₃	6	C ₁₅ H ₂₄ N ₂ S	none
	136.9987	+6.8	C ₅ HN ₂ O ₃	6.5	C ₁₆ H ₂₆ NS	none
	137.0140	-8.5	C ₉ HN ₂	10.5	C ₁₂ H ₂₆ NO ₃ S	none
	137.0147	-9.2	C ₃ H ₇ NO ₃ S	1	C ₁₈ H ₂₀ N ₂	none

Table 1. MassFragment results for m/z 137.0055 based on spectra from Figure 6 and nitro-based *.mol file.

The fragment ion m/z 199.0454 was also observed in the MS/MS spectra. MassFragment reported a candidate structure for fragment ion m/z 199.0454 based on the amino/ketone-based structure (Figure 6). There were no reported structures for this fragment ion when the S-oxide based structure was loaded into MassFragment (Table 2).

Daughter (Da)	Mass (Da)	Mass error (mDa)	Formula	DBE	Δ Formula	Structure(s), score & H-deficit
199.0454	199.0456	-0.2	C ₁₂ H ₉ NS	9	C ₉ H ₁₈ N ₂ O ₃	none
	199.0429	+2.5	C ₉ H ₁₁ O ₃ S	4.5	C ₁₂ H ₁₆ N ₃	none
	199.0422	+3.2	C ₁₅ H ₅ N	14	C ₆ H ₂₂ N ₂ O ₃ S	none
	199.0415	+3.9	C ₇ H ₉ N ₃ O ₂ S	5	C ₁₄ H ₁₈ O	none
	199.0508	-5.4	C ₁₁ H ₇ N ₂ O ₂	9.5	C ₁₀ H ₂₀ NOS	none
	199.0395	+5.9	C ₁₂ H ₇ O ₃	9.5	C ₉ H ₂₀ N ₃ S	none
	199.0382	+7.2	C ₁₀ H ₅ N ₃ O ₂	10	C ₁₁ H ₂₂ OS	none
	199.0541	-8.7	C ₈ H ₁₁ N ₂ O ₂ S	4.5	C ₁₃ H ₁₆ NO	none
	199.0548	-9.4	C ₁₆ H ₇	13.5	C ₅ H ₂₀ N ₃ O ₃ S	none

Table 2. MassFragment results for m/z 199.0454 based on spectra from Figure 6 and nitro-based *.mol file.

NMR supporting data

The collected fraction was dried down and prepared in deuterated methanol for analysis by NMR. It was determined from the NMR data (not shown) that the impurity m/z 402 was consistent with the proposed structure.

Conclusion

For small molecule analysis, the advances in MS technologies with greater mass accuracy readily complement the advances in LC technology and sub-2- μ m column particles capable of peak widths of 1 to 3 seconds. Laboratories performing impurity analysis can realize significant benefits by using chemically-intelligent software that improves how this LC/MS^E data is analyzed.

Analytical benefits

- The high resolution possible with the SYNAPT MS System provided excellent mass accuracy for elemental composition determination of precursor and product ions.
- MassFragment facilitated the confirmation of a proposed structure for an unknown impurity isolated from quetiapine in a forced degradation experiment.

Realized benefits

- Increasing confidence in the structural determination due to the high mass accuracy data.
- Minimizing the number of possible elements in the elemental compositions for the compound(s) and fragments.
- Using criteria filters such as isotopic pattern values, elemental filters, and mass accuracy values saves time during data evaluation.
- Correlating spectral MS information to possible structural fragmentation and assigning a rank allows for more confidence in elucidation decisions.

Proper characterization of a compound provides greater insight to the reactive behavior of the compound that will lead to more informative formulation and packaging decisions.

References

1. Ahuja S and Alsante K. Handbook of Isolation and Characterization of Impurities in Pharmaceutical Compounds. 2003; Elsevier.
2. Jones MD et al. Method Development of an Impurity Profile for Quetiapine Fumarate Drug Substance. Waters. 2009; 720003080en.
3. Jones MD et al. Impurity Isolation and Scale-up from UPLC Methodology: Analysis of an Unknown Degradant Found in Quetiapine Fumarate. Waters. 2009; 720003078en.

Featured Products

[ACQUITY UPLC System <https://www.waters.com/514207>](https://www.waters.com/514207)

[MassLynx MS Software <https://www.waters.com/513662>](https://www.waters.com/513662)

720003079, June 2015

©2019 Waters Corporation. All Rights Reserved.