

Nota de aplicación

High-Throughput LC-MS MRM Disease Protein Marker Verification Using the ionKey/MS System

Chris Hughes, Lee A. Gethings, Hans Vissers, James I. Langridge

Waters Corporation



For research use only. Not for use in diagnostic procedures.

Abstract

Biomarker discovery and validation are the first two steps in understanding disease and drug development. This application note has demonstrated the utility of the novel ionKey/MS System for rapid and robust discovery validation experiments. Quantification measurements for light to heavy stable isotope labeled peptides have shown excellent consistency and are in agreement with expected values.

Benefits

The ionKey/MS System is a robust, novel microfluidics platform that eliminates manual chromatographic connections and enables high throughput and robust validation analysis.

Introduction

Biomarker discovery and validation are the first two steps in understanding disease and drug development. Validation is technology-challenged since it requires analyzing a large number of samples with high-throughput, but nevertheless requires high sensitivity, high resolution, large dynamic range and excellent selectivity.

Targeted LC-MS based assays afford protein quantification with the reproducibility and throughput required to improve marker acceptance. Multiple reaction monitoring (MRM) using tandem quadrupole mass spectrometers is one of the enabling technologies applied in targeted LC-MS approaches.¹ Overall, MRM-based methods compare favorably with antibody-based techniques, such as ELISAs or protein arrays, in that MRM-based methods are less expensive and can be developed more rapidly. However, one of the major challenges using MRM for candidate marker verification in mammalian body fluids is the required sensitivity for the quantification of low-abundance proteins, especially in the case of sample limited conditions.

Miniaturized LC systems offer improved mass sensitivity but often lack the required throughput, robustness, and reproducibility. The application of a novel microfluidics platform for the quantification of marker peptides and proteins is presented, considering speed, sensitivity, and selectivity.

Experimental

LC conditions

LC system:	nanoACQUITY UPLC System or ACQUITY UPLC M-Class System
Sample loop:	5 μ L
Separation device:	iKey BEH C ₁₈ Separation Device, 130Å, 1.7 μ m, 150 μ m x 100 mm (p/n 186007258)
iKey temp.:	40 °C
Flow rate:	1.2 μ L/min
Mobile phase A:	98.9:1:0.1% v/v water/acetonitrile/ formic acid
Mobile phase B:	98.9:1:0.1% v/v acetonitrile/water/ formic acid in water
Volume injected:	0.1 to 1.0 μ L

Gradient:

Time(min)	%A	%B	Curve
Initial	98	2	Initial
1.0	98	2	6
45	60	40	6
46	15	85	6

Time(min)	%A	%B	Curve
47	15	85	6
48	98	2	6

MS conditions

MS system:	Xevo TQ-S
Acquisition mode:	MRM
Quadrupole resolution:	0.4 Da or 0.7 Da
Ionization mode:	ESI positive
Capillary voltage:	3.0 kV
Source temp.:	100 °C

Software processing

MassLynx raw data were analyzed using Skyline² and visualized using Spotfire DecisionSite (Tibco Spotfire, Boston, MA).

Materials

MS Qual/Quant QC Mix was obtained from Sigma-Aldrich (St. Louis, MO, USA). MassPREP *E. coli* Digest Standard (p/n 186003196) was from Waters Corporation (Milford, MA, USA).

The MS Qual/Quant mixture was spiked into the *E. coli* background such that loads for a 1 µL injection ranged from 32 amol to 40 fmol peptides in the presence of 100 ng *E. coli*. The sample was injected three times at four different loadings (0.1, 0.2, 0.5, and 1 µL).

Results and Discussion

The MS Qual/Quant QC mixture consists of 14 peptide species present as light and heavy labeled analogues and at varying amounts to give an in-sample dynamic range of 1.25e3, Table 1. The peptide mixture was spiked into a complex background matrix of an *E. coli* tryptic digest to represent a high-throughput validation study and assess quantitative precision and accuracy.

Protein	Peptide sequence*	On-column amount (attomoles)**	Expected light to heavy ratio***
Carbonic Anhydrase I	GGPFSDSY[R]	4000	1.02
Carbonic Anhydrase I	VLDALQAI[K]	2000	2.04
Carbonic Anhydrase II	AVQQPDGLAVLGIFL[K]	400	8.4
Carbonic Anhydrase II	SADFTNFDP[R]	80	55
NAD(P)H dehydrogenase	EGHLSPDIVAEQ[K]	800	0.92
NAD(P)H dehydrogenase	ALIVLAHSE[R]	400	0.93
C-reactive Protein	ESDTSYVSL[K]	80	9.4
C-reactive Protein	GYSIFSYAT[K]	16	38
Cyclophilin A	FEDENFIL[K]	320	0.29
Cyclophilin A	VSELFAD[K]	160	0.54
Cyclophilin A	TAENF[R]	80	0.92
Catalase	GAGAFGYFEVTHDIT[K]	800	0.161
Catalase	FSTVAGESGSADTV[R]	16	4.9
Catalase	NLSVEDAA[R]	3.2	49

Table 1. Protein digest and stable isotope labeled (SIL) peptide composition of MS Qual/Quant QC Mix.

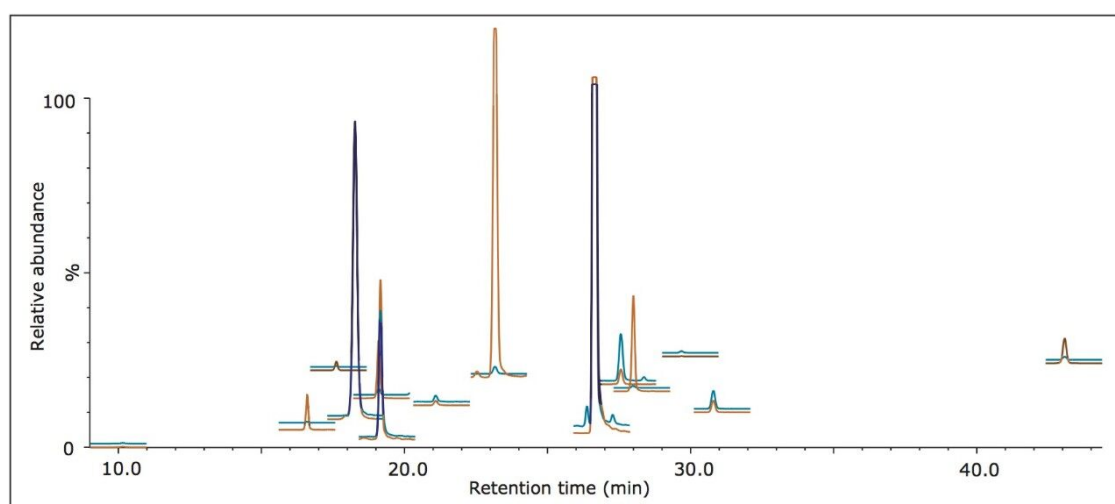
* Amino acid in [brackets] denotes site of label incorporation for heavy SIL peptides: [K] $^{13}\text{C}_6$ $^{15}\text{N}_2$, [R] $^{13}\text{C}_6$ $^{15}\text{N}_4$

N_4

** Heavy labeled on-column amount for 0.1 μL injection

*** Certificate of Analysis

An MRM method containing 28 functions was programmed to monitor three transitions from each of the light and heavy peptide species, and the sample was analyzed using the ionKey/MS System with the nanoACQUITY UPLC System and the Xevo TQ-S Mass Spectrometer. Figure 1 shows the extracted MRM chromatograms for each peptide species resulting from a 0.5 μ L injection and exhibits i) peptides that are resolved from the background matrix and ii) the dynamic range present within the sample. The on-column amounts displayed here range from 16 amol for the peptide NLSVEDAA[R] to 20 fmol for the peptide GGPFSDSYR.



*Figure 1. Overlay of extracted MRM chromatograms for each of the light and heavy stable isotope labeled peptides in the mixture for a 0.5 μ L injection in the presence of *E. coli* background matrix. Red indicates the light and blue the heavy labeled analogue.*

MRM transitions were inspected using Skyline, ensuring that a minimum of three peptides per protein and three transitions per peptide were detected and analyzed. Figure 2 represents the technical reproducibility of three transitions for an example light/heavy peptide, i.e. fragment ions y5, y6, and y7 for peptide GGPFSDSYR. Further Skyline interrogation shows that excellent quantitative measurement consistency, even without normalization, between technical replicates is readily achieved, Figure 3. The example illustrates mass chromatograms and ratio measurements for peptide AVQQPDGLAVLGIFLK from Carbonic Anhydrase II, which is present in the mixture at elevated levels for the light analogue.

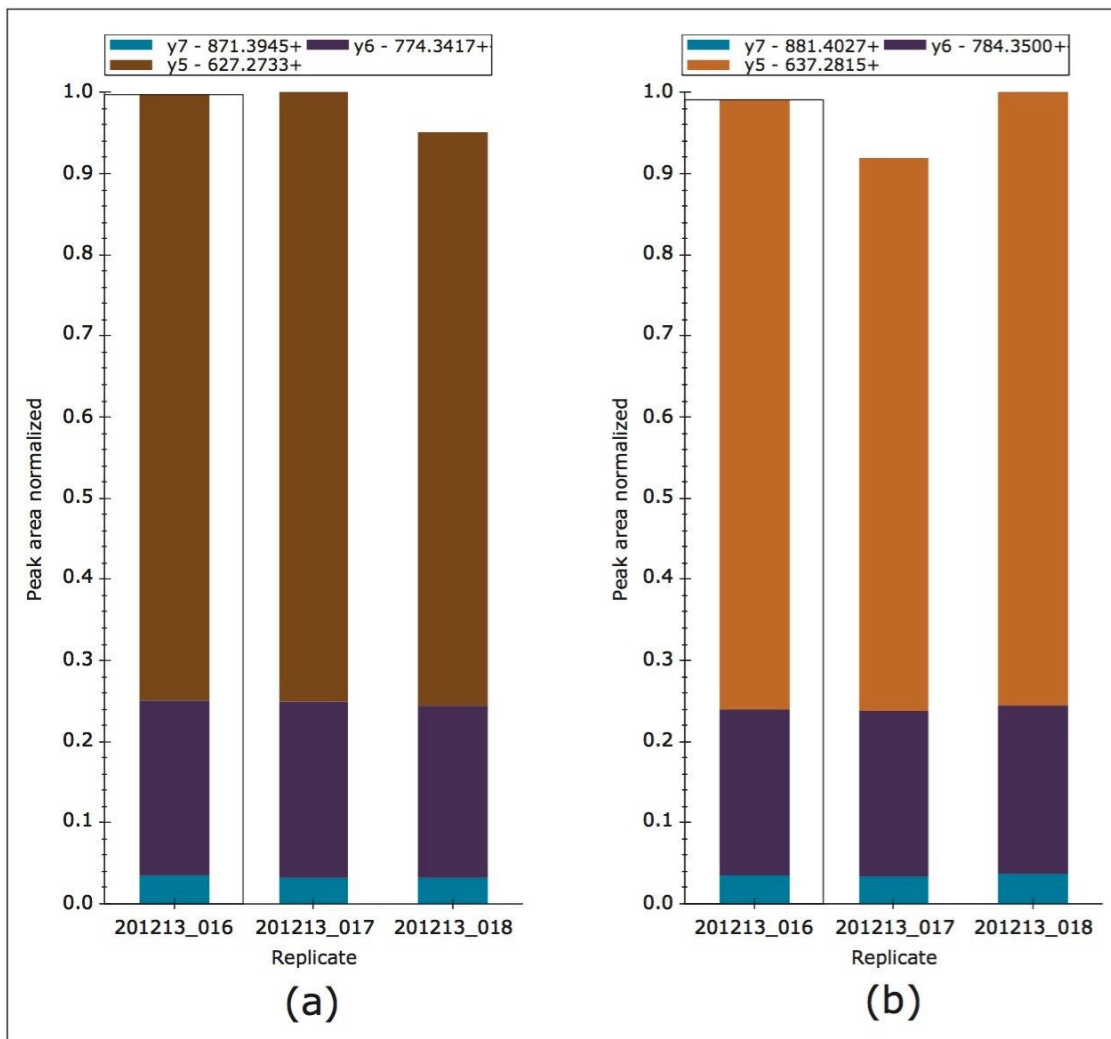


Figure 2. Reproducibility of raw MRM transitions; a) 493.2 \Rightarrow 627.3 (y5), \Rightarrow 774.3 (y6) and 871.4 (y7) for light GGPFSDSYR and b) 498.2 \Rightarrow 637.3 (y5), \Rightarrow 784.3 (y6) and 881.4 (y7) for heavy GGPFSDSY[R].

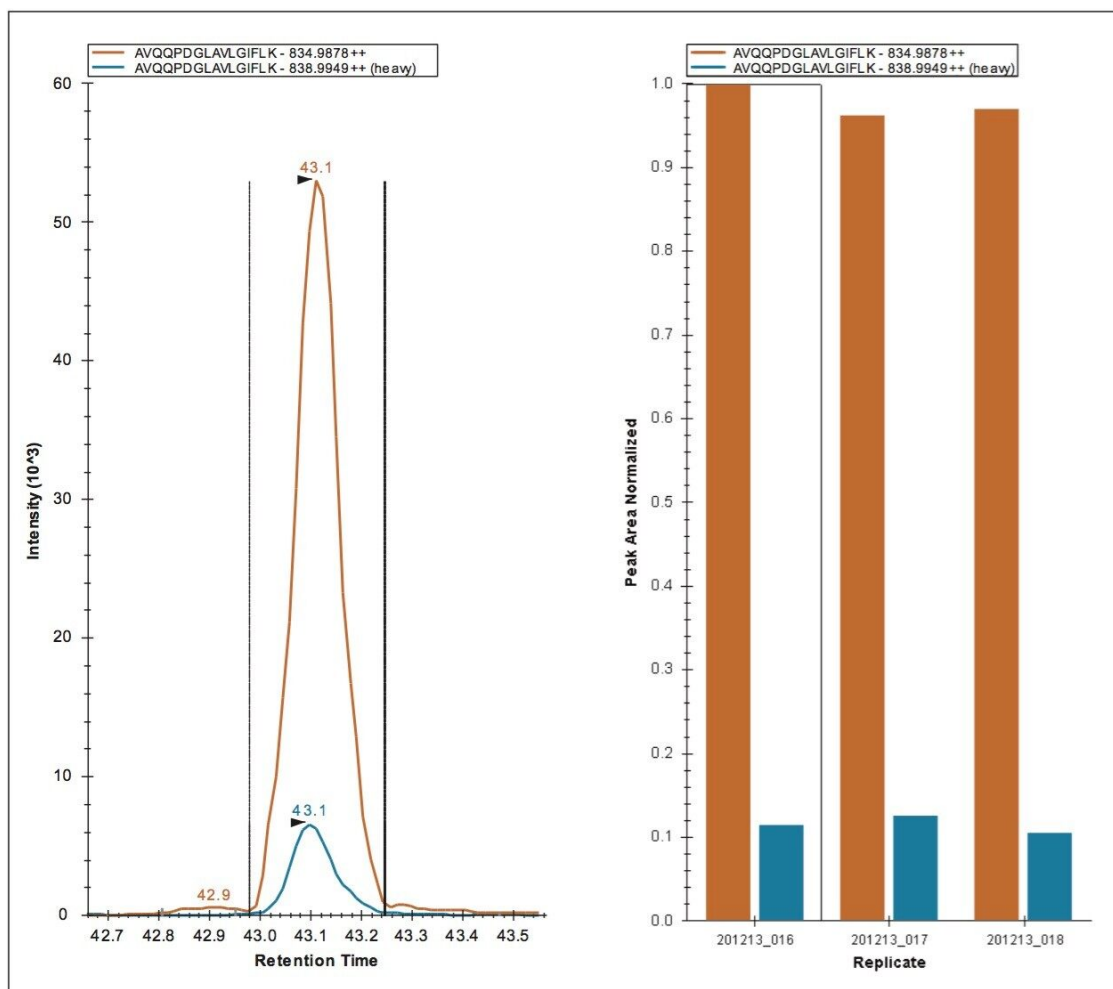


Figure 3. Quantitative measurement consistency for peptide AVQQPDGLAVLGIFLK, where brown indicates the light analogue. The expected light/heavy (L/H) ratio equals 8.4.

In Figure 4, the measured light-to-heavy ratios for every injection, 12 for each quadrupole setting, and every peptide in the mixture, are plotted against the expected ratios from the supplier certificate of analysis at unit and elevated quadrupole resolution settings. The results clearly show that excellent ratio measurements are achieved over the range of expected ratios for both mass spectrometer quadrupole resolution settings. For this application, unit quadrupole resolution afforded sufficient quantitative accuracy. The results presented are the average relative quantification results for four different injection volumes, ranging from 0.1 to 1 μ L. This covers a sample load from 3.2 amol for NLSVEDAA[R] to 40 fmol for GGPFSDSY[R] and VLDALQAIK, spanning four orders of concentration dynamic range. As can be observed by the error measurement values, precision was not noticeably affected by quadrupole resolution. As an indication of the limits of detection that can be achieved, shown in Figure 5 is the chromatogram for the peptide

NLSVEDAA[R] from Catalase. This chromatogram was generated from the lowest sample injection amount, 0.1 μ L and so equates to 3.2 amol on-column.

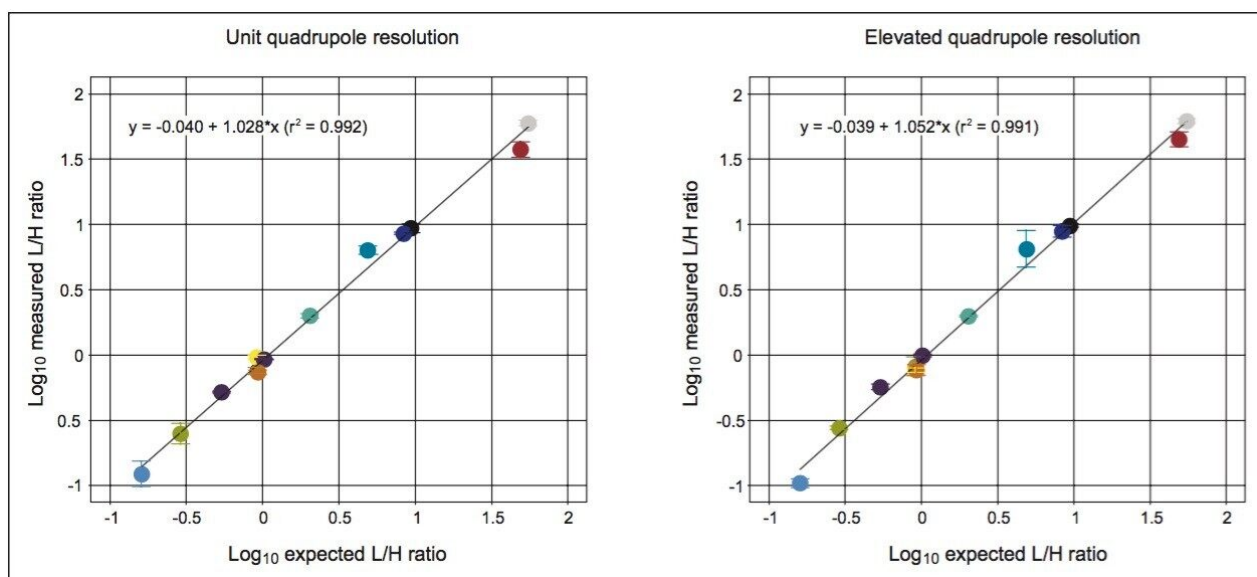


Figure 4. Measured L/H ratio vs. expected L/H ratio for unit and elevated quadrupole resolution. Color annotation by peptide sequence and error represented as the standard deviation of four injections ranging from 0.1 to 1.0 μ L.

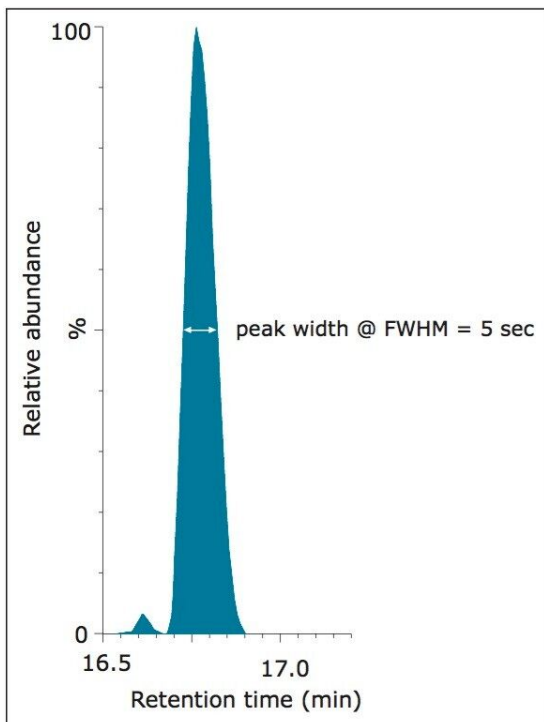


Figure 5. Typical chromatogram representing 3.2 amol on-column of the 'heavy' peptide variant of NLSVEDAA[R] from catalase.

Conclusion

This application note has demonstrated the utility of the novel ionKey/MS System for rapid and robust discovery validation experiments. Quantification measurements for light to heavy stable isotope labeled peptides have shown excellent consistency and are in agreement with expected values. The limit of detection has been demonstrated down to at least 3.2 amol on-column.

References

1. Addona et al. Multi-site assessment of the precision and reproducibility of multiple reaction monitoring-

based measurements of proteins in plasma. *Nat Biotechnol.* 2009 Jul;27(7):633–41.

2. MacLean et al. Skyline: an open source document editor for creating and analyzing targeted proteomics experiments. *Bioinformatics.* 2010 Apr 1;26(7):966–8.

Featured Products

[ionKey/MS <https://www.waters.com/134782630>](https://www.waters.com/134782630)

[Xevo TQ-S <https://www.waters.com/10160596>](https://www.waters.com/10160596)

[ACQUITY UPLC M-Class System <https://www.waters.com/134776759>](https://www.waters.com/134776759)

[MassLynx MS Software <https://www.waters.com/513662>](https://www.waters.com/513662)

Available for Purchase Online

[iKey BEH C18 Separation Device, 130Å, 1.7 µm, 150 µm X 100 mm, 1/pkg <https://www.waters.com/waters/partDetail.htm?partNumber=186007258>](https://www.waters.com/waters/partDetail.htm?partNumber=186007258)

[MassPREP E. Coli Digest Standard <https://www.waters.com/waters/partDetail.htm?partNumber=186003196>](https://www.waters.com/waters/partDetail.htm?partNumber=186003196)

720005010, January 2016