

Note d'application

Column Screening for the UPLC Separation of Plastic Additives as Part of Extractables and Leachables Workflows

Kenneth D. Berthelette, Thomas H. Walter, Baiba Cabovska

Waters Corporation



Abstract

This application note focuses on the selection of appropriate column chemistries to separate eighteen polymer additives routinely monitored in extractables and leachables (E&L) workflows. Often an analyst will select columns for new work based on past experience or a literature search.

Benefits

- Proper column selection for method development based on analytes of interest
- Understanding basic differences in column chemistries and their impact on separations

Introduction

For novice chromatographers, method development in high performance liquid chromatography (HPLC) can be a daunting task. With the large number of method development approaches and columns to choose from, knowing where to start and how to achieve the best results can be difficult. This difficulty is magnified when working with complex samples containing analytes with a wide range of chemical properties. Regardless of the inherent complexity, method development can be simplified to basic steps which may be adapted for different types of assays. For instance, the steps needed to develop a separation method for the analysis of pharmaceutical degradation products are similar to those for the analysis of extracted polymer samples. While these two examples may have different end goals, the steps of method development are similar, and require only minor changes to achieve the desired results.

This application note focuses on the selection of appropriate column chemistries to separate eighteen polymer additives routinely monitored in extractables and leachables (E&L) workflows. Often an analyst will select columns for new work based on past experience or a literature search. However, another approach is to screen a group of columns that covers a wide range of selectivities, then select the column that best meets the separation goals. Understanding the differences in the column chemistries available and selecting the most appropriate columns to screen for a given assay can not only speed up method development but can also lead to better separations.

Experimental

Sample preparation

Standards of each analyte were purchased, and a mixture was created as outlined below. These compounds are present in the Waters Extractables and Leachables Standard (p/n: 186008063).¹ However, the Extractables and Leachables Standard is intended for mass spectrometry (MS) detection and is not applicable for this work, which utilized ultra-violet (UV) detection. Therefore, a more concentrated sample was created to ensure good UV detection. The following analytes were dissolved in methanol at the indicated concentrations: Irganox 1010 (0.1 mg/mL), Irganox 245 (0.075 mg/mL), Irganox 1076 (0.5 mg/mL), Irganox 1098 (0.075 mg/mL), Cyasorb 2908 (0.15 mg/mL), Uvinul 3030 (0.05 mg/mL), propyl paraben (0.075 mg/mL), Ethanox 330 (0.05 mg/mL), Tinuvin 327 (0.025 mg/mL), diethyl phthalate (0.05 mg/mL), diphenyl phthalate (0.05 mg/mL), TCP (0.075 mg/mL), octabenzene (0.05 mg/mL), Tinuvin P (0.025 mg/mL), Uvitex OB (0.075 mg/mL), dibutyl sebacate (2.0 mg/mL), methyl paraben (0.075 mg/mL), and Tinuvin 360 (0.075 mg/mL). The chemical structures of these analytes are shown in Figure 1.

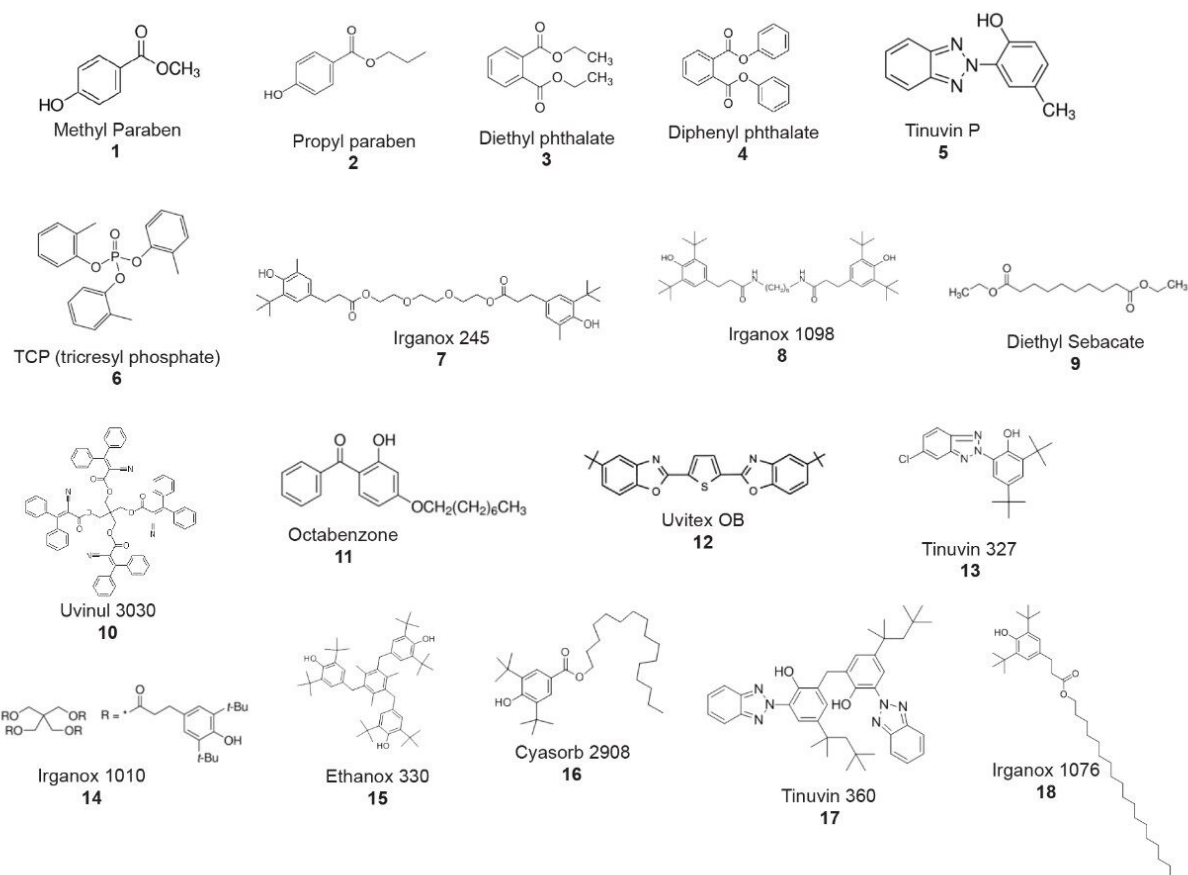


Figure 1. Chemical structures of eighteen polymer additives used to illustrate method development.

Method Conditions

Instruments:

ACQUITY UPLC H-Class with 6 column positions (Column Manager and 2 Column Manager Auxiliaries) and PDA Detector

Data management:

MassLynx Software

Columns:

All columns were 2.1 × 50 mm 1.x μm. See Figure 3 for column selection.

Mobile phase A:

Water with 0.1% formic acid

Mobile phase B:	Acetonitrile with 0.1% formic acid
Flow rate:	0.5 mL/min
Gradient:	Initial conditions of 10% B, linear ramp to 100% B in 6.85 minutes, hold for 4.92 minutes. Return to starting conditions and hold at 10% B for 2.66 minutes. Total run time: 14.45 minutes.
PDA detection:	220 nm

Results and Discussion

Many method development strategies recommend screening 3–5 columns with varying ligand and particle types in order to provide the best starting point for new methods.²⁻⁵ The United States Pharmacopeia (USP) has different designations for HPLC columns, called L#, which are assigned based on the chemical and physical properties of the stationary phase. For instance, an L1 designation is given to columns with C₁₈ ligands bonded to porous or non-porous silica or ceramic particles 1.5 to 10 µm in diameter. The L1 designation includes columns such as ACQUITY BEH C₁₈, ACQUITY HSS C₁₈, and Symmetry C₁₈. There are many different L designations, most with a variety of different brands to choose from, making the selection of the right columns to screen difficult. The column choice can be narrowed down by selecting those appropriate for the analytes being tested. For instance, L3 columns (porous silica with no bonded ligand) are typically used for normal phase separations of polar analytes, and may not be suitable for the analysis of plastic additives, which are moderately to highly hydrophobic. For these analytes, reversed-phase chromatography using an L1 column would be a better choice. Other suitable choices include L7 (C₈ ligand bonded to a silica particle) and L11 (phenyl ligand bonded to a silica particle) columns. The lower hydrophobic retention of the C₈ and Phenyl Columns may elute the more hydrophobic plastic additives faster, reducing the overall analysis time. The Phenyl Column also offers different selectivity, particularly for analytes containing multiple pi bonds, which interact in unique ways with the stationary phase when certain mobile phases are used.

In the example described here, a method was developed for separating eighteen plastic additives. Five

columns were selected and screened to cover a range of selectivities while still achieving a reasonable time for method development (Figure 2). Each column was chosen specifically for the mixture of analytes being tested as each has a distinct advantage compared to the other columns. When used together, this panel of columns offers a wide range of selectivities which provide a good starting point for method development. The first column chosen, an L1-designated BEH (ethylene-bridged hybrid) C₁₈ is a good general-purpose column which has been used in many analyses. This stationary phase contains a C₁₈ ligand attached to a fully porous hybrid silica particle, which is stable across a wide pH and temperature range, allowing considerable flexibility in method development. The next column, CSH (charged surface hybrid) C₁₈ is also designated as an L1 column. However, the CSH Column is based on a positively charged hybrid silica particle which provides better peak shapes for basic analytes at low pH.^{6,7} The next column selected was the L7-designated CORTECS C₈, which uses a solid-core or superficially porous silica particle. The solid-core particle allows CORTECS Columns to achieve higher efficiencies compared to fully porous particles.⁸ The fourth column selected was an L11-designated CORTECS Phenyl, which uses the same superficially porous particle as the CORTECS C₈ but has a phenyl-hexyl ligand attached. As mentioned previously, for moderately to highly hydrophobic analytes, the decreased retentivity of the C₈ and phenyl-hexyl columns may prove to be advantageous. Lastly, to maximize the overall selectivity of the panel we selected the L43- designated HSS (high strength silica) PFP column, containing a pentafluorophenyl ligand attached to a fully porous silica particle. The PFP ligand allows several secondary interactions to take place in addition to the hydrophobic interactions. By screening all the columns shown as part of a method development process different separations can be achieved.

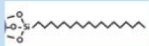
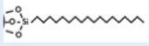
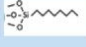

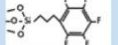
Column Name	Particle Type	Bonded Ligand	Performance Benefits	L#
ACQUITY UPLC BEH C ₁₈	Fully porous Ethylene-Bridged Hybrid (BEH)		General purpose column that is stable over a wide pH and temperature range	1
ACQUITY UPLC CSH C ₁₈	Fully porous Charged-Surface Hybrid (CSH)		General purpose column with excellent pH stability, and superior peak shape and loading capacity for basic analytes	1
CORTECS UPLC C ₈	Superficially porous silica		High efficiency column with reduced retention vs C ₁₈ columns	7
CORTECS UPLC Phenyl	Superficially porous silica		High efficiency column with unique selectivity for analytes containing pi bonds	11
ACQUITY UPLC HSS PFP	Fully porous silica		Designed for maximum selectivity through multiple secondary interactions including pi-pi and cation-exchange interactions	43

Figure 2. Column stationary phases selected for the analysis of plastic additives.

Figure 3 shows the chromatograms obtained using the five columns and an acetonitrile gradient. The use of five stationary phases has led to different chromatographic results. For instance, comparing the separations obtained using the two C₁₈ columns, components 6 and 7 (TCP and Irganox 245) were not well separated on the BEH C₁₈ column, but were baseline resolved on the CSH C₁₈ Column. This demonstrates the selectivity of the base particle separate from the bonded ligand. In looking at the separations achieved using the CORTECS C₈ and CORTECS Phenyl Columns, there are also significant differences. The cluster of analytes 14, 15, and 18 co-eluted when the CORTECS Phenyl Column was used but were separated on the CORTECS C₈ Column. However, the C₈ column did not separate components 10 and 12. These examples speak to the need for screening multiple types of bonded ligand, even if they are on the same base particle. For this mixture, the best separation was achieved using an ACQUITY CSH C₁₈ Column. Column screening is only the first step in method development. The screening of different mobile phase conditions including different strong solvents and different additives provide additional options for optimizing separations.²⁻⁴

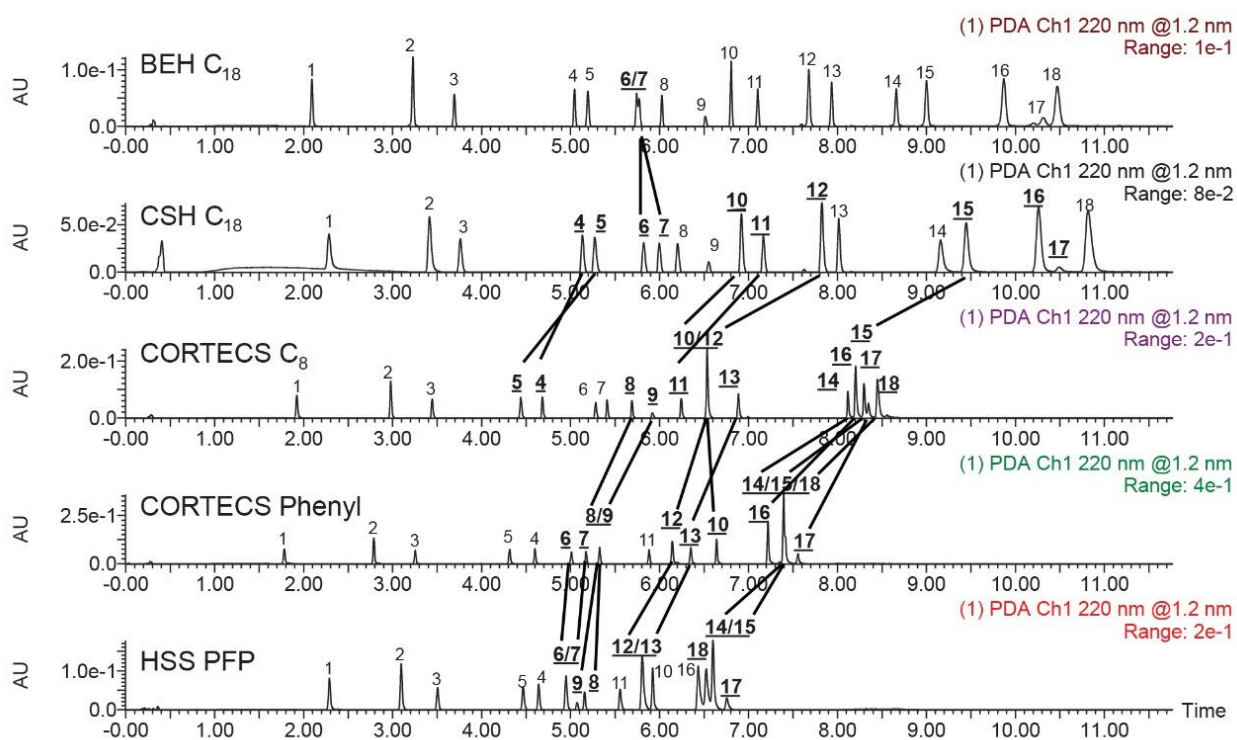


Figure 3. Separation of the standard mixture using five different columns and an acetonitrile gradient with 0.1% formic acid. For further details see experimental section. 1. methyl paraben, 2. propyl paraben, 3. diethyl phthalate, 4. diphenyl phthalate, 5. Tinuvin P, 6. TCP, 7. Irganox 245, 8. Irganox 1098, 9. dibutyl sebacate, 10. Uvinul 3030, 11. octabenzene, 12. Uvitex OB, 13. Tinuvin 327, 14. Irganox 1010, 15. Ethanox 330, 16. Cyasorb 2908, 17. Tinuvin 360, 18. Irganox 1076. Bolded numbers indicate selectivity differences between columns.

Conclusion

Screening multiple columns is highly recommended during HPLC method development. Appropriate column chemistries should be selected based on the analytes of interest. Using columns packed with stationary phases made from different base particles and bonded ligands can provide a range of selectivities for the separation, leading to a better method. This application note focused on the importance of column screening for developing a method to separate a mixture of plastic additives. Five column chemistries were evaluated to separate a mixture of eighteen analytes. In most cases, the mixture was well separated except for a few co-

eluting analytes. For this application, a CSH C₁₈ Column gave the best separation, with baseline resolution of all analytes within 11 minutes. Selecting appropriate column chemistries to screen allowed the identification of the best separation conditions with just five analytical runs. Knowing the types of analytes being tested, and choosing the columns based on that information provides a good starting point for all method development activities.

References

1. Waters Extractables and Leachables Standard. Accessed 26-Nov-2019. [http://asr.waters.com/products/product.cfm?pid=2138-Extractables%20 %26%20Leachables%20Screening%20Standard](http://asr.waters.com/products/product.cfm?pid=2138-Extractables%20%26%20Leachables%20Screening%20Standard).
2. Alkhateeb, F., Rainville, P.; "Analytical Qualityby- Design Based Method Development for the Analysis of Formoterol, Budesonide, and Related Compounds Using UHPLC-MS" Waters Application Note (720006696EN).
3. Jones, M., Henry, C.; "Efficient Method Development for the Analysis of Sunscreen Active Ingredients Using UPLC with Mass Detection and Chromatography Data Software" Waters Application Note (720006403EN).
4. Salman, S., Vinayak A. K.; "Quality-by-Design Approach to Stability Indicating Method Development for Linagliptin Drug Products" Agilent Application Note (5991-3834EN).
5. Biswas, K. M., Castle B. C., Olsen B. A., Risley D. S., Skibic M. J., and Wright P. B.; "A Simple and Efficient Approach to Reversed-Phase HPLC Method Screening" *J Pharm Biomed Anal* 2009 49 692–701.
6. Lauber, M., Koza, S. McCall, S., Alden, B., Iraneta, P. and Fountain, K.; "High-Resolution Peptide Mapping Separations with MS-Friendly Mobile Phases and Charge-Surface-Modified C₁₈". *Anal. Chem.* 2013 85 6936–6944.
7. Lucie, N., Hana, V., and Solich, P.; "Evaluation of New Mixed-Mode UHPLC Stationary Phases and the Importance of Stationary Phase Choice when using Low Ionic-Strength Mobile Phase Additives." *Talanta* 2012 93 99–105.
8. Walter, T. H.; Shiner, S.; Izzo, G.; Savaria, M.; Iraneta, P. C.; Berthelette, K.; Danaceau, J. P.; Chambers, E. E.; Fountain, K. J.; "High Efficiency Narrow-Bore Columns Packed with 1.6 and 2.7 μ m Solid-Core Particles", *Chromatography Today* 2015 8, 22–25.

Featured Products

ACQUITY UPLC H-Class PLUS System <<https://www.waters.com/10138533>>

MassLynx MS Software <<https://www.waters.com/513662>>

ACQUITY UPLC PDA Detector <<https://www.waters.com/514225>>

720006777, March 2020

©2019 Waters Corporation. All Rights Reserved.