

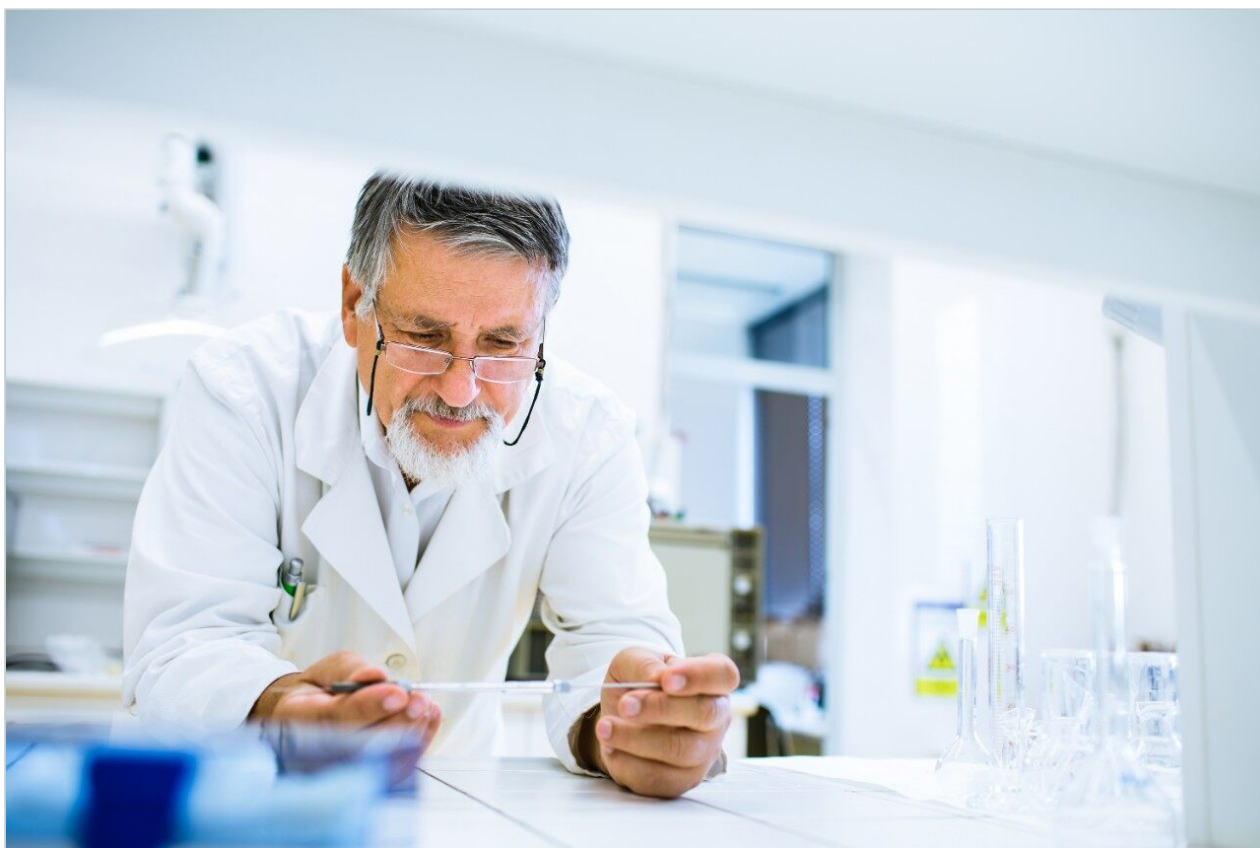
응용 자료

## Targeted UPLC-MS/MS Analysis of Oxylipins

---

Billy J. Molloy

Waters Corporation



*For research use only. Not for use in diagnostic procedures.*

---

## Abstract

Here we present a targeted UPLC-MS/MS methodology for the semi-quantitative profiling of bioactive oxylipins (oxidized fatty acids) in plasma/serum and cell culture media. The combination of mixed mode solid-phase extraction (Oasis MAX  $\mu$ Elution SPE) and UPLC-MS/MS provides a broad ranging analysis of oxylipins for use in targeted workflows. Retention times and MRM transitions for 92 oxylipins are detailed for routine, targeted analysis of samples in biomedical research studies.

### Benefits

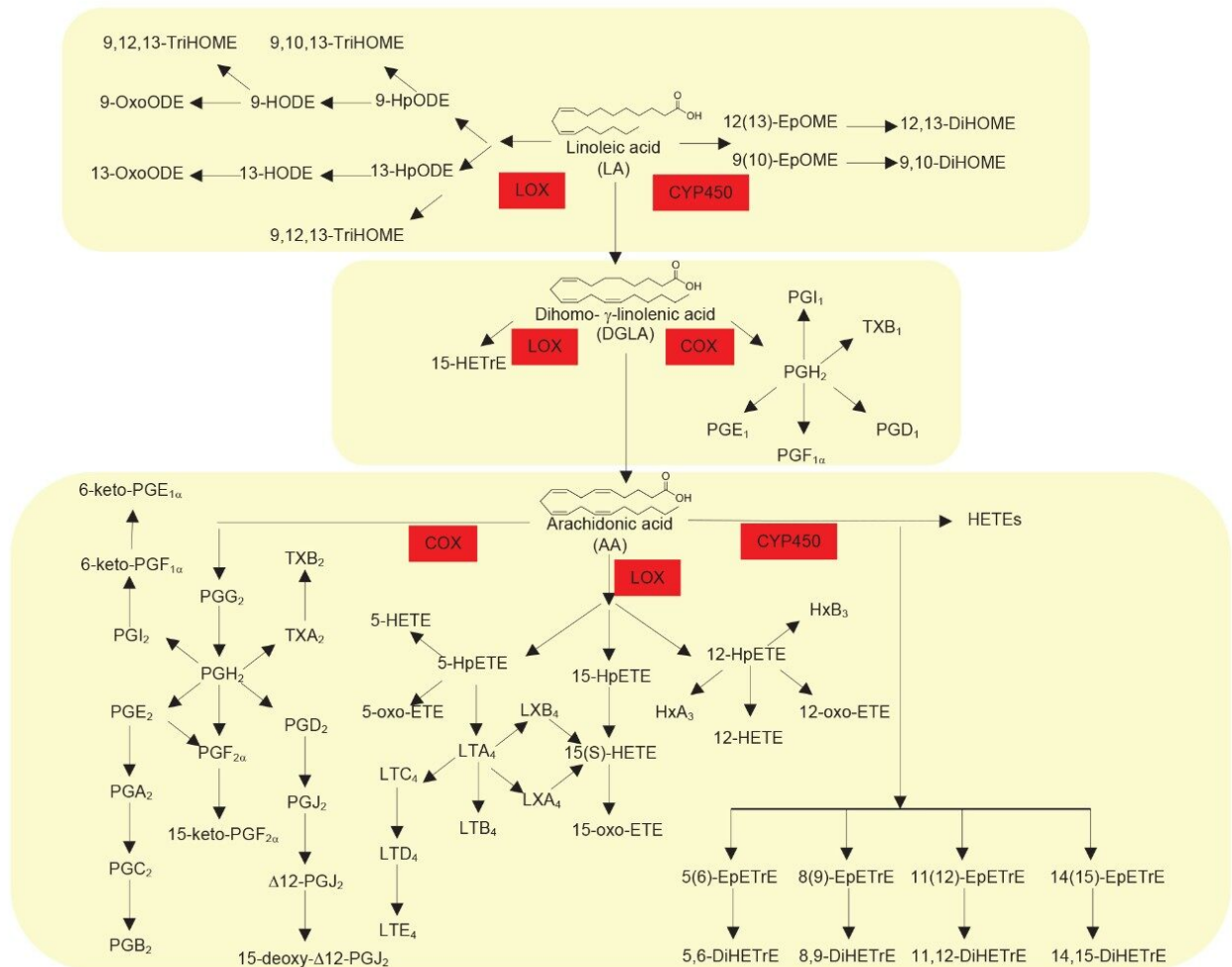
- Analytically sensitive and selective UPLC-MS/MS methodology for the analysis of 92 oxylipins in a single analytical run
- Separation of key isomeric compounds
- A simple analytical workflow without derivatization

---

## Introduction

Oxylipins are important bioactive lipids that play prominent roles in many key biological processes, most notably in instigation and resolution of inflammation. As such, the semi-quantitative profiling of a wide range of oxylipins in plasma/serum and cell culture samples would be advantageous for use in biomedical research studies. Oxylipins are produced by enzymatic and non-enzymatic oxygenation of omega-6 polyunsaturated fatty acids (linoleic acid, adrenic acid, and arachidonic acid) and omega-3 polyunsaturated fatty acids –  $\alpha$ -linolenic acid, eicosapentaenoic acid and docosahexaenoic acid – see Figures 1 and 2. The major metabolic pathways involved in the generation of this class of compounds are the cyclooxygenase (COX), lipoxygenase (LOX), and cytochrome P450 (CYP) pathways. These pathways are important drug targets for multiple diseases and therefore a semi-quantitative profiling methodology is highly relevant in drug discovery. The semi-quantitative analysis of oxylipins is however very challenging, due to their low endogenous concentration and their limited stability within samples. In addition, the same fatty acid precursor can react at different positions on the molecule, leading to multiple isomeric species. An analytically specific and sensitive methodology is therefore required. Analysis of oxylipins has previously been performed using radiometric and enzymatic immunoassays, but these methods often lack selectivity and target a limited number of compounds. Gas chromatography (GC-MS) methods have also been used, but these methods

require complex procedures involving derivatization. Here we demonstrate a targeted UPLC-MS/MS method for the profiling of 92 oxylipins in plasma/serum and cell culture samples.



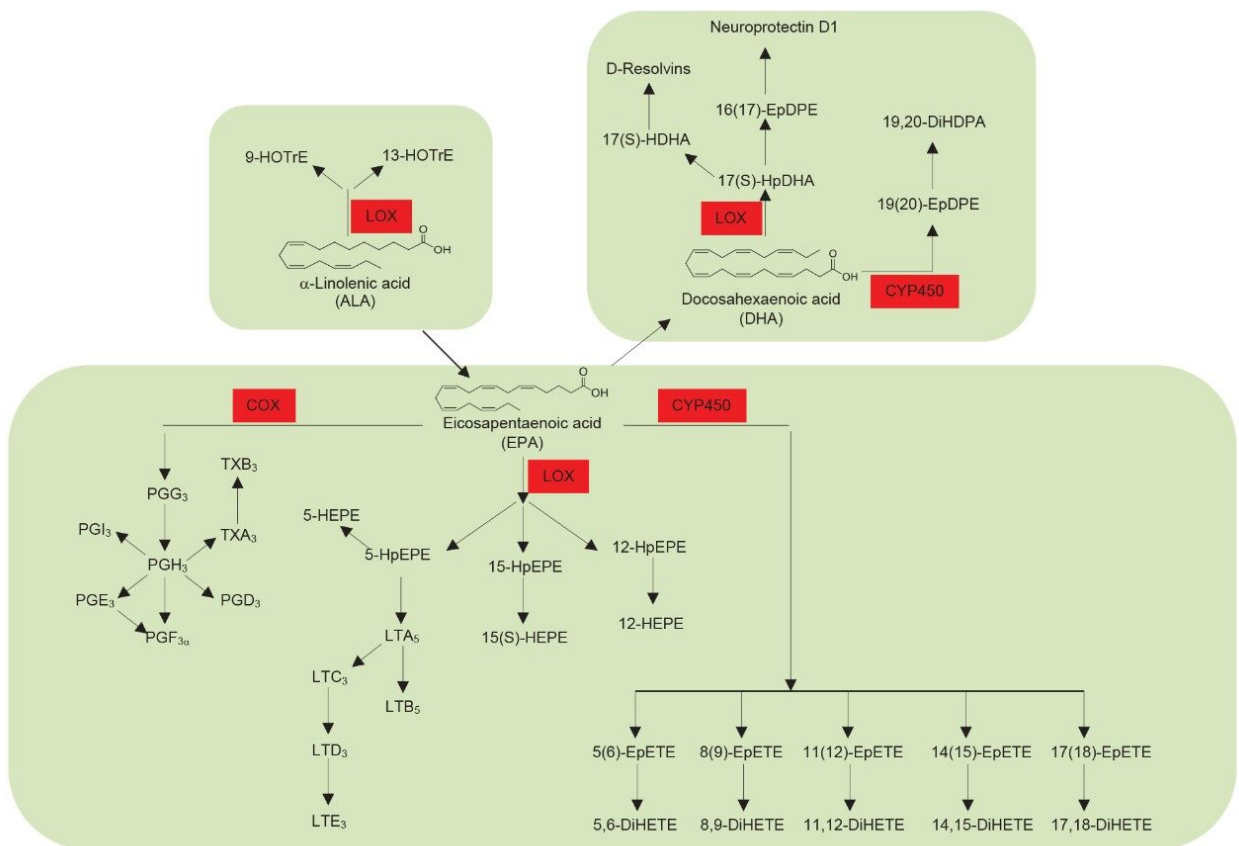


Figure 1 and 2. Schematic of the metabolic pathways that lead to the formation of oxylipins.

## Experimental

### Sample Preparation

Sample pre-treatment (centrifuge sample prior to dilution)

- For plasma/serum: sample dilution: 150  $\mu$ L plasma sample + 550  $\mu$ L water
- For cell culture: sample dilution: 300  $\mu$ L cell culture sample + 400  $\mu$ L [85:15 (200  $\mu$ M ammonium bicarbonate : methanol)]

Solid phase extraction using Waters Oasis MAX  $\mu$ Elution plate (for plasma)

- Condition with 200  $\mu$ L methanol
- Condition with 200  $\mu$ L of water

- Load sample (total volume)
- Wash with 600  $\mu\text{L}$  of water
- Wash with 600  $\mu\text{L}$  of methanol
- Prepare collection plate by adding 30  $\mu\text{L}$  of 10% glycerol<sub>(aq)</sub> to each well
- Elute as slowly as possible with 30  $\mu\text{L}$  50:50 ACN:IPA + 5% formic acid
- Seal plate with polypropylene mat cap
- Mix plate
- Inject 3  $\mu\text{L}$  onto the UPLC-MS/MS system

Solid phase extraction using Waters Oasis MAX  $\mu\text{Elution}$  plate (for cell culture)

- Condition with 200  $\mu\text{L}$  methanol
- Condition with 200  $\mu\text{L}$  of [85 : 15 (200  $\mu\text{M}$  ammonium bicarbonate : methanol)]
- Load sample (total volume)
- Wash with 600  $\mu\text{L}$  of [85 : 15 (200  $\mu\text{M}$  ammonium bicarbonate : methanol)]
- Wash with 600  $\mu\text{L}$  of methanol
- Prepare collection plate by adding 30  $\mu\text{L}$  of 10% glycerol<sub>(aq)</sub> to each well
- Elute as slowly as possible with 30  $\mu\text{L}$  50:50 ACN:IPA + 5% formic acid
- Seal plate with polypropylene mat cap
- Mix plate
- Inject 3  $\mu\text{L}$  onto the UPLC-MS/MS system

## UPLC Conditions

UPLC separation was performed with an ACQUITY UPLC I-Class System equipped with an ACQUITY Premier BEH C<sub>18</sub> (2.1 x 150 mm) analytical column maintained at 35 °C. A 3  $\mu\text{L}$  aliquot of the sample was injected onto the column and eluted under reversed-phase gradient conditions where mobile phase A comprised 0.01% formic acid<sub>(aq)</sub> and mobile phase B comprised 0.01% formic acid in acetonitrile. Oxylipins were eluted from the column and separated using a 3-stage linear gradient. An initial stage of 25–28% mobile phase B over 4 minutes was followed by a second phase of 28–32% mobile phase B over 8 minutes. Finally, a third stage of 14 minutes from 32–95% mobile phase B was followed by a 2-minute column flush and then re-equilibration back to starting conditions.

## MS Conditions

Oxylipins were detected using Multiple Reaction Monitoring (MRM) analyses on a Xevo TQ-XS Mass Spectrometer. All experiments were performed in negative electrospray ionization (ESI-) mode. The ion source temperature and capillary voltage were kept constant and set to 150 °C and 2.0 kV, respectively. The cone gas flow rate was 50 L/hr and desolvation temperature was 650 °C. The MRM transitions employed are detailed in Table 1.

## Informatics

Method information was imported onto the LC-MS system using the Quanpedia functionality within MassLynx. This extendable and searchable database produces LC and MS methods as well as processing methods for use in TargetLynx for compound quantification.

## LC Conditions

LC system:	ACQUITY UPLC I-Class
Detection:	Xevo TQ-XS
Column(s):	ACQUITY Premier BEH C <sub>18</sub> (2.1 x 150 mm)
Column temp.:	35 °C
Sample temp.:	6 °C
Injection volume:	3 uL
Flow rate:	0.4 mL/min
Mobile phase A:	0.01% formic acid <sub>(aq)</sub>
Mobile phase B:	0.01% formic acid in acetonitrile
Gradient:	0–4 minutes 25–28% B 4–12 minutes 28–32% B

12–26 minutes 32–95% B

## MS Conditions

MS system:	Xevo TQ-XS
Ionization mode:	ESI negative
Capillary voltage:	2.0 kV

---

## Results and Discussion

The focus of this work was to demonstrate a sensitive and specific UPLC-MS/MS method for profiling bioactive oxylipins in plasma, serum, and cell culture samples. Oxylipins are present at very low levels in biological samples and good sample preparation is very important for successful analysis. In order to remove as many non-relevant matrix components as possible—and to maximize sensitivity for the low abundance analytes – we used an anion exchange, mixed mode solid-phase extraction (Oasis MAX SPE) prior to UPLC-MS/MS analysis. This type of SPE specifically targets and extracts acids from the matrix resulting in much cleaner samples than a standard SPE method.

As a class of compounds, oxylipins have a particularly high number of structurally similar, and therefore isobaric, compounds. To achieve separation of these species, having the correct chromatographic conditions is critical. The reversed-phase UPLC conditions used here were extensively optimized, comparing various mobile phase/stationary phase combinations in order to obtain conditions that allowed separation of the multiple isobaric compounds. Figure 3 is a representative chromatogram from a pooled human plasma sample and shows the elution order of the most abundant oxylipins in the sample. Table 1 gives a comprehensive list of all the retention times and optimized MRM conditions for all 92 analytes. Figure 4 is an example of where the excellent specificity of the UPLC gradient is demonstrated. As is clear from the chromatograms shown, the ability to separate 2 structural isomers (i.e. PGE2 and PGD2) from a solvent standard is not sufficient as the matrix contains even more isobaric forms of these same compounds. The UPLC chromatograms shown for PGE2 and PGD2 in human plasma show just how many isobars there are for these analytes (the arrows indicate the analyte peaks).

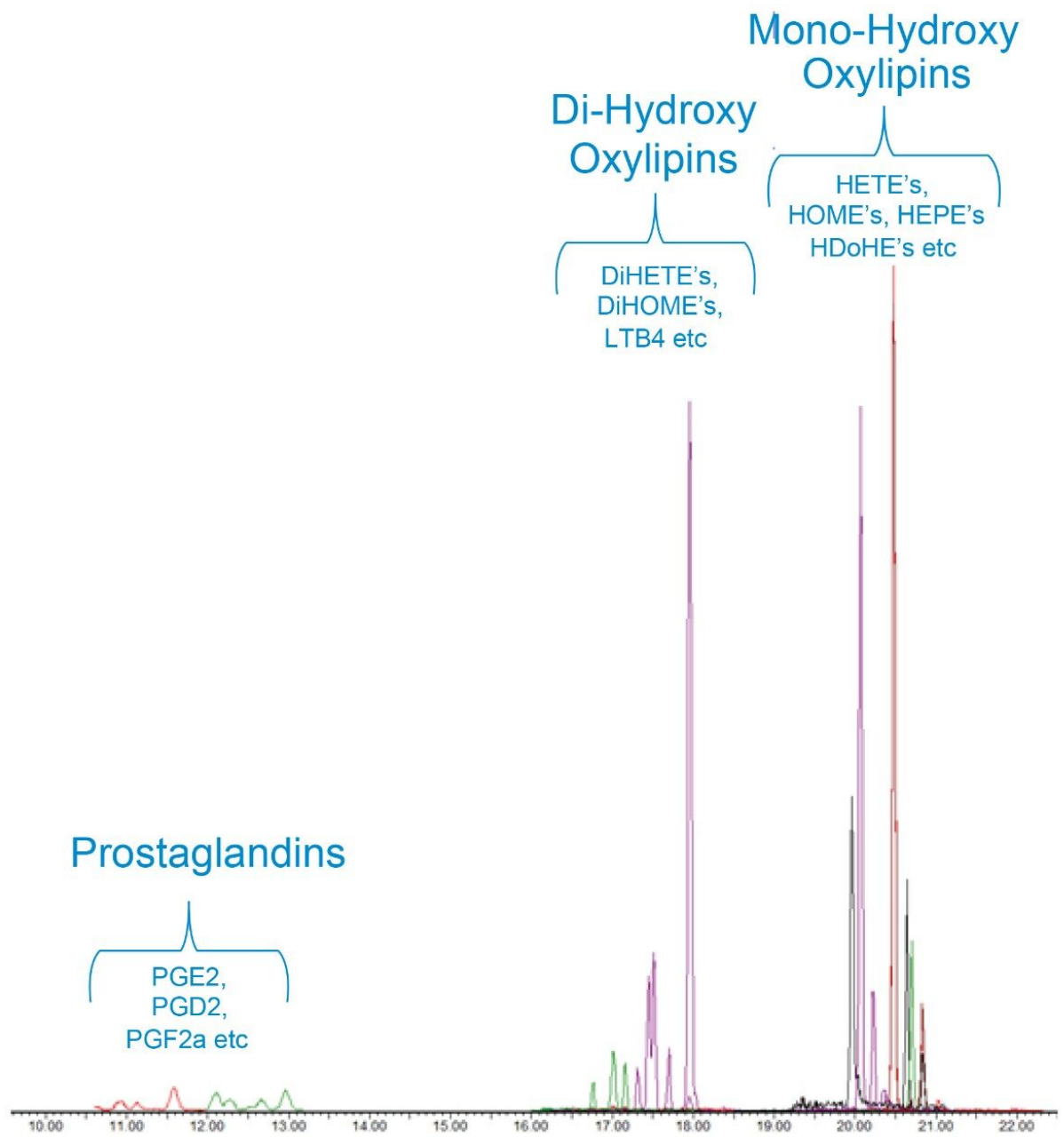


Figure 3. UPLC-MS/MS chromatogram showing the elution order for some of the most abundant oxylipins in human plasma. (For a comprehensive list of analytes and retention times, see Table 1.)



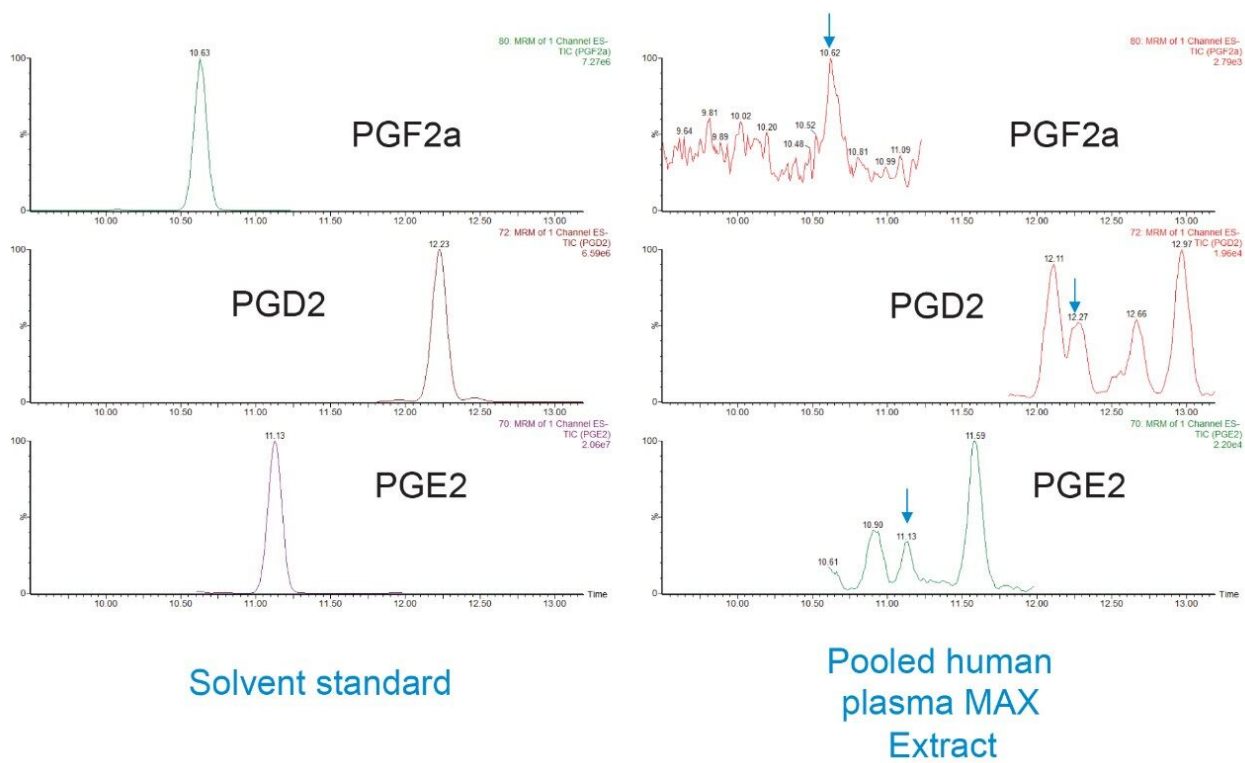


Figure 4. UPLC-MS/MS chromatograms for prostaglandins in human plasma and solvent standards. (Arrows indicate the correct peak in the human plasma sample.)

Using a Xevo TQ-XS in negative ESI-mode, retention times and optimal MRM transitions were determined for all individual oxylipins (Table 1). To enhance the sensitivity of detection, these MRM transitions were monitored in defined retention time windows, maximizing dwell times by reducing overlapping transitions. Using this UPLC-MS/MS method, we rapidly profiled 92 oxylipins in plasma, serum, and cell culture samples.

Compound	Precursor Mass	Product Mass	Cone Voltage (V)	Collision Energy (eV)	RT (mins)
6-keto PGF1 $\alpha$	369.1	207.0	60	19	4.70
8-iso 15(R) PGF2 $\alpha$	353.1	193.0	40	20	7.62
8-iso PGF2 $\alpha$	353.1	193.0	40	20	8.04
TXB2	369.1	169.0	25	16	8.20
11 $\beta$ -PGF2 $\alpha$	353.1	193.0	40	20	8.55
(+/-) 5-iPF2 $\alpha$ -V1	353.1	115.0	25	19	9.52
PGF2 $\alpha$	353.1	193.0	40	20	10.40
8-iso PGE2	351.1	271.1	30	16	10.94
Lipoxin A5	349.1	115.0	25	12	11.25
PGE2	351.1	271.1	30	16	11.30
11 $\beta$ -PGE2	351.1	271.1	30	16	11.70
Resolvin D3	375.1	147.0	25	18	12.43
Lipoxin B4	351.1	221.1	25	12	12.50
PGD2	351.1	271.1	30	16	12.56
15-Keto PGE2	349.1	287.1	40	12	12.60
Resolvin D2	375.1	141.0	25	15	13.34
13,14-dihydro-15-keto PGE2	351.1	113.0	20	28	14.20
Resolvin D1	375.1	141.0	25	13	14.68
Lipoxin A4	351.1	115.0	25	13	14.68
15(R)-Lipoxin A4	351.1	115.0	25	13	14.76
17(R)-Resolvin D1	375.1	141.0	25	13	14.83
6(S)-Lipoxin A4	351.1	115.0	25	13	15.10
13,14-dihydro-15-keto PGD2	351.1	113.0	20	28	15.34
LTD4	496.1	177.0	25	18	15.85
LTE4	438.1	333.1	25	16	16.48
8(S),15(S)-DiHETE	335.1	208.0	25	16	17.00
17,18-DiHETE	335.1	247.1	25	14	17.13
5(S),15(S)-DiHETE	335.1	115.0	25	13	17.25
Neuroprotectin D1	359.1	153.0	25	13	17.35
Resolvin D5	359.1	119.0	25	13	17.44
14,15-DiHETE	335.1	207.0	25	14	17.50
LTB4	335.1	195.0	35	14	17.60
15-deoxy- $\Delta$ 12,14-PGD2	333.1	271.1	10	14	17.60
12,13-DiHOME	313.1	183.0	35	15	17.70
9,10-DiHOME	313.1	201.0	35	15	18.00
14,15-DiHETrE	337.0	207.0	25	15	18.40
19,20-DiHDP A	361.1	273.1	25	14	18.47
12S-HHTrE	279.1	179.0	35	15	18.50
11,12-DiHETrE	337.1	167.0	25	16	18.80
9-HOTrE	293.1	171.0	30	12	19.10
8,9-DiHETrE	337.1	127.0	25	16	19.16
13-HOTrE	293.1	224.0	30	10	19.24
15-deoxy- $\Delta$ 12,14-PGJ2	315.1	271.1	10	12	19.50
5(S),6(R)-DiHETE	335.1	115.0	25	14	19.50
5,6-DiHETrE	337.1	145.0	25	16	19.65
5(S),6(S)-DiHETE	335.1	115.0	25	14	19.73
12(S)-HEPE	317.1	179.0	35	15	19.85
5(S)-HEPE	317.1	115.0	35	15	20.17
13-HODE	295.1	195.0	45	14	20.17
20-HDoHE	343.1	341.1	35	15	20.24
9-HODE	295.1	171.0	35	15	20.26
15-HETE	319.1	175.0	35	11	20.45
16-HDoHE	343.1	233.0	35	15	20.49
17-HDoHE	343.1	201.0	35	15	20.55
17(18)-EpETE	317.1	215.0	20	10	20.56
9-HpODE	293.1	185.0	30	16	20.60
13-HpODE	293.1	113.0	30	18	20.63
13-HDoHE	343.1	193.0	35	15	20.65
13-KODE	293.1	113.0	30	17	20.72
11-HETE	319.1	167.0	35	15	20.72
15-HpETE	317.1	113.0	30	16	20.75
14-HDoHE	343.1	205.0	35	15	20.75
10-HDoHE	343.1	153.0	35	15	20.81
15-KETE	317.1	113.0	30	17	20.83
14(15)-EpETE	317.1	207.0	20	10	20.90
9-KODE	293.1	185.0	30	17	20.90
11-HDoHE	343.1	149.0	35	15	20.93
12-HETE	319.1	179.0	30	12	20.97
11(12)-EpETE	317.1	167.0	20	10	21.00
8-HETE	319.1	155.0	35	14	21.00
7-HDoHE	343.1	141.0	35	15	21.06
16(S)-HETrE	321.1	221.1	35	15	21.08
8(9)-EpETE	317.1	155.0	20	10	21.10
12(S)-HpETE	317.1	153.0	30	14	21.13
8-HDoHE	343.1	189.0	35	15	21.15
9-HETE	319.1	167.0	35	15	21.15
12-KETE	317.1	153.0	30	17	21.24
5-HETE	319.1	115.0	35	10	21.33
4-HDoHE	343.1	101.0	35	15	21.56
19(20)-EpDPE	343.1	241.1	25	10	21.56
5-HpETE	317.1	203.0	30	16	21.64
12(13)-EpOME	295.1	195.0	25	13	21.66
14(15)-EET	319.1	219.0	50	8	21.72
9(10)-EpOME	295.1	171.0	25	14	21.84
16(17)-EpDPE	343.1	233.1	25	10	21.85
13(14)-EpDPE	343.1	193.1	25	10	21.92
10(11)-EpDPE	343.1	153.1	25	12	22.02
5-KETE	317.1	203.0	30	17	22.07
11(12)-EET	319.1	167.0	45	10	22.08
7(8)-EpDPE	343.1	109.0	25	12	22.18
8(9)-EET	319.1	155.0	42	8	22.25
AA	303.1	259.1	10	12	24.50

© 2021 Waters Corporation. All Rights Reserved.