

Nota de aplicación

## Automated High Throughput Sample Preparation and UPLC-MS/MS Analysis for the Quantification of EtG and EtS in Human Urine Using the Andrew+ Pipetting Robot

---

Sarah Dunne, Danielle Cullen

Waters Corporation

This is an Application Brief and does not contain a detailed Experimental section.

*For forensic toxicology use only.*

Want to learn more about the Andrew+ Pipetting Robot?

REQUEST A DEMO

---

### Abstract

---

This work demonstrates an automated simple dilute and shoot sample preparation method using the Andrew+ Pipetting Robot from Andrew Alliance. The Andrew+ developed method prepares the sample preparation of biomarkers ethylglucuronide (EtG) and ethylsulfate (EtS). At each protocol step during experiment execution, Andrew+ executes the OneLab instructions, setting the required parameters on the labware and Bluetooth pipettes to be used. OneLab is very accessible and straight forward to use for creating and transferring methods.

Sample identification and quantification is performed on an ACQUITY UPLC I-Class (FTN) System and Xevo TQD Mass Spectrometer using an ACQUITY UPLC CSH Phenyl-Hexyl Column (p/n: [186005408 < https://www.waters.com/nextgen/us/en/shop/columns/186005408-acquity-uplc-csh-phenyl-hexyl-column-130a-17--m-21-mm-x-150-mm-1.html>](https://www.waters.com/nextgen/us/en/shop/columns/186005408-acquity-uplc-csh-phenyl-hexyl-column-130a-17--m-21-mm-x-150-mm-1.html) ).

## Benefits

- Simple dilute and shoot sample preparation method
- Automated method transferability – comparable results to manual preparation
- Higher throughput with 96-well format
- Increase in efficiencies – automated pipetting enables better utilization of analyst's time
- Reduces the opportunity for human error
- OneLab Software is easily operated for creating/modifying methods

---

## Introduction

Ethyl glucuronide (EtG) and ethyl sulfate (EtS) are important biomarkers for monitoring alcohol use. Identification and quantification of EtG and EtS as a biomarker of ethanol use is performed for a wide range of testing purposes. Detecting these metabolites has proven beneficial as alcohol abuse is highly prevalent in many cultures and contribute considerably to the global burden of health and social issues. As a result, there is a growing need for the detection and identification of ethanol use.

EtG and EtS are superior markers of alcohol intake due to a long detection window. EtG and EtS are minor water soluble II metabolites of ethanol and are detectable in urine up to 80 hours following ethanol consumption.<sup>1</sup>

The sample preparation method detailed here is based upon the “dilute and shoot” format. This method involves

---

the dilution of samples with an internal standard before injection onto an LC-MS system.

The EtG/EtS “dilute and shoot” method on Andrew+ involves the development of accurate pipetting and mixing of samples on deck. This is a straightforward workflow to perform, however pipetting can still be a tedious and repetitive task especially when running larger sample numbers. The automation of this workflow frees up analyst expertise for other tasks and requires minimal training to run. The OneLab cloud native software guides the user when running a protocol with the required materials and deck setup. Andrew+ provides reproducible and consistent pipetting with every run, reducing the risk of user error that can be seen in manual sample preparation.

---

## Experimental

Two scripts were developed on the Andrew+ for an automated “dilute and shoot” sample preparation of EtG and EtS in human urine.

### **Automated preparation – Andrew+ Pipette mix**



- Following centrifugation (7200 rpm for three minutes) aliquots of 50  $\mu$ L of sample are added into a 2 mL 96-well collection plate (p/n: 186002482)
- Samples were diluted with 500  $\mu$ L of internal standard solution and pipette mixed
- Finally the user is prompted to seal and remove samples from Andrew+

## Automated preparation – Andrew+ Microplate Shaker+



- Following centrifugation (7200 rpm for three minutes) aliquots of 50  $\mu\text{L}$  of sample are added into a 2 mL 96-well collection plate (p/n: 186002482)
- Samples were diluted with 500  $\mu\text{L}$  of internal standard solution and mixed on shaker at 1700 rpm for two minutes
- Finally the user is prompted to seal and remove samples from Andrew+

---

## Results and Discussion

Two protocols were developed on the Andrew+ for a “dilute and shoot” automated method. Both protocol methods transferred a set of eight quality control low aliquots and eight quality control high aliquots to the first two rows of the 2 mL collection plate (p/n: 186002482 <<https://www.waters.com/nextgen/us/en/shop/vials-containers--collection-plates/186002482-96-well-sample-collection-plate-2-ml-square-well-50-pk.html>> ) which were diluted with water (in place of internal standard). The difference in both automated methods was the mixing of the liquid in the wells. One automated method used pipette mixing and the other automated method used Microplate Shaker+ to perform mixing. The pipette liquid handling parameters were adjusted to ensure smooth transfer of samples. During development of protocol that performs pipette mixing of samples, adjustments were made to the pipette mixing parameters. An example of this was increasing the pipette mixing speed to ensure thorough mixing. Adjustments were straightforward to change in OneLab. This optimization helped increase reproducibility and precision.

The full Andrew+ deck layout for both scripts can be seen in Figures 1 and 2.

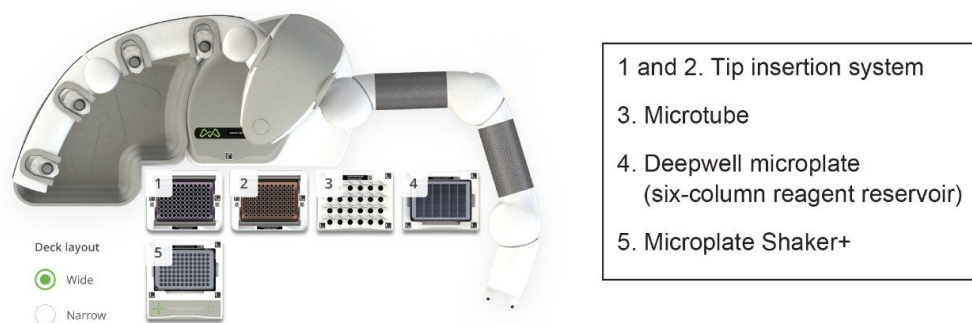


Figure 1. Andrew+ Deck layout for sample preparation of EtG and EtS in human urine using Andrew+ Microplate Shaker+.



Figure 2. Andrew+ Deck layout for sample preparation of EtG and EtS in human urine using Andrew+ pipettes for pipette mixing.

A manual preparation was also performed to compare the recovery and the precision of the automated workflow versus manual workflow.

Following sample preparation, multiple reaction monitoring (MRM) was performed using the previously specified transitions documented in Waters Application Note [720006273](https://www.waters.com/content/dam/waters/en/app-notes/2018/720006273/720006273-en.pdf) <  
<https://www.waters.com/content/dam/waters/en/app-notes/2018/720006273/720006273-en.pdf>> . Two transitions were used for EtG and one transition for EtS. For EtG, a target quantifier/qualifier ratio was adopted using quality control concentration EtG/EtS:500/250 ng/mL.

Figure 3 is a representation of an automated injection. Results are equivalent to what was achieved in Waters

Application Note 720006273 <<https://www.waters.com/content/dam/waters/en/app-notes/2018/720006273/720006273-en.pdf>> . Acceptability criteria included +/- 20% of target ion ratio.

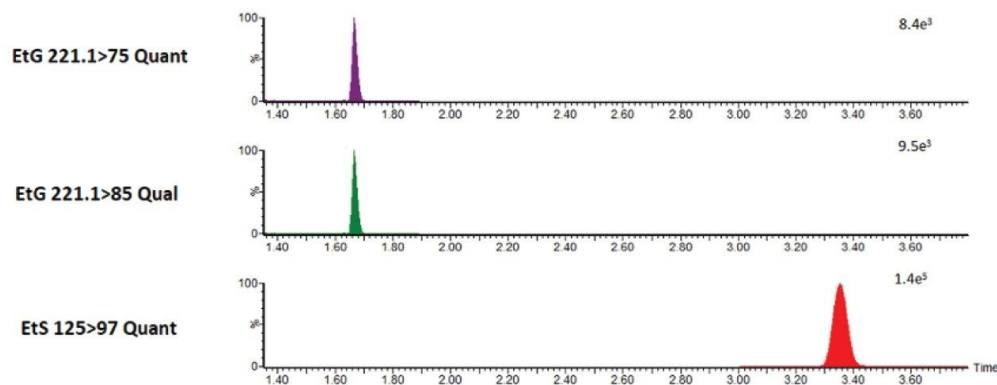


Figure 3. EtG: 500 ng/mL (0.5 mg/mL), EtS: 200 ng/mL (0.20 mg/mL).

The precision of all methods was assessed at two concentrations for EtG (200, 500 ng/mL) and EtS (800, 2000 ng/mL). The “dilute and shoot” automated assays for precision is comparable to manual preparation workflow. For EtS, the precision slightly improved. See Table 1 for precision results.

Table 1. Precision data

Compound	Precision (%CV) (n = 8)		
	Manual preparation	Andrew+ Microplate Shaker+	Andrew+ pipette mix
EtG 500 ng/mL	3.4	3.4	3.3
EtG 2000 ng/mL	1.5	1.7	2.0
EtS 200 ng/mL	3.6	1.4	1.9
EtS 800 ng/mL	2.7	1.2	1.7

The comparison of recoveries for the automated workflows performed by the Andrew+ versus the manual workflow can be seen in Figure 4. The overall recovery of results (n = 8) achieved is +/- 2% compared to a manual workflow for both EtG and EtS, QC low and QC high samples.

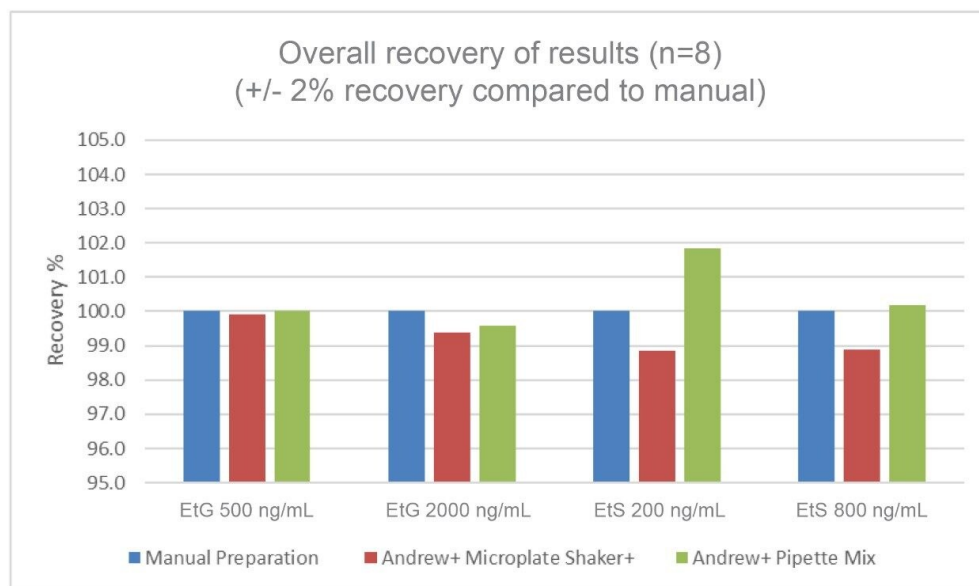


Figure 4. Recovery of Andrew+ sample preparation methods.

Both automated methods developed on the Andrew+ have demonstrated very comparable and equivalent performance to a manual preparation workflow. This offers customers the option to use either automated methods for the quantification of EtG and EtS in human urine. In a high throughput setting workflow, efficiencies would be gained using the Shaker+ Microplate as the option for pipette mixing.

For further information on materials and LC-MS/MS methods used, reference protocol [720006273 < https://www.waters.com/content/dam/waters/en/app-notes/2018/720006273/720006273-en.pdf > .](https://www.waters.com/content/dam/waters/en/app-notes/2018/720006273/720006273-en.pdf)

## Conclusion

Automated methods for dilute and shoot sample preparation of EtG and EtS are demonstrated using the Andrew+ Pipetting Robot in a high throughput setting. The Andrew+ has demonstrated that mixing of samples can be performed by Pipette mixing on Andrew+ or the Microplate Shaker+.

The developed methods are accurate, precise, and comparable to manual preparation for the identification and quantification of biomarkers EtG and EtS.

---

## References

1. Ohouo, P. Y.; Dixon, N.; Lieu, A.; Zavery, Z.; Rosano, T. G. UPLC-MS/MS Method for Quantitation of EtG and EtS in Human Urine. Waters Application Note, [720006273](#) <<https://www.waters.com/content/dam/waters/en/app-notes/2018/720006273/720006273-en.pdf>> , May 2018.

---

## Featured Products

[Xevo TQD Triple Quadrupole Mass Spectrometry <https://www.waters.com/134608730>](https://www.waters.com/134608730)

[MassLynx MS Software <https://www.waters.com/513662>](https://www.waters.com/513662)

[TargetLynx <https://www.waters.com/513791>](https://www.waters.com/513791)

[ACQUITY UPLC I-Class PLUS System <https://www.waters.com/134613317>](https://www.waters.com/134613317)

[ACQUITY UPLC and ACQUITY PREMIER Columns <https://www.waters.com/513206>](https://www.waters.com/513206)

720007186, March 2021



© 2023 Waters Corporation. All Rights Reserved.

[Terms of Use](#) [Privacy](#) [Trademarks](#) [Sitemap](#) [Careers](#) [Cookies](#) [Preferencias de cookies](#)