

Note d'application

## Column Selection for RPLC-UV Impurity Analysis of Fatty Acid Modified GLP-1 Receptor Agonists

---

Caitlin M. Hanna, Stephan M. Koza, Steve Shiner

Waters Corporation

---

### Abstract

Here, we screen four column chemistries for the RPLC-UV impurity analyses of liraglutide and semaglutide. The columns and chromatographic conditions presented here provide direction and analyte-specific tailoring for the development of RPLC-UV methods for fatty acid modified GLP-1 receptor agonists (GLP-1 RAs).

### Benefits

- Comparison of five columns for RPLC-UV impurity analysis of fatty acid modified GLP-1 RAs
  - Recommended columns and chromatographic conditions for lipopeptide impurity analysis method development
  - MS identification of impurities with abundances as low as 0.1% despite ion suppression from TFA
- 

### Introduction

---

Glucagon-like peptide 1 receptor agonists (GLP-1 RAs) are a class of biotherapeutic peptide-like drugs developed to treat Type 2 diabetes. The recent FDA approval of multiple GLP-1 RAs for weight loss has led to rapid increase in their demand and use.<sup>1</sup> The prevalence of these drugs prompts a need for robust chromatographic methods to screen for impurities that may impact their safety and efficacy.

GLP-1 RAs consist of a wide range of chemical structures including unmodified synthetic peptides (*e.g.* exenatide), peptide-modified Fc fragments of human IgG4 (*e.g.* dulaglutide), and fatty-acid modified peptides (*e.g.* liraglutide, semaglutide, tirzepatide). Waters recently published a single RPLC-UV/MS method for the analysis of a series of GLP-1 RAs using a systematic protocol for method development.<sup>2</sup> This method is a valuable starting point, but tailoring the column chemistry and chromatographic conditions may be necessary to effectively separate GLP-1 RA drug products from their impurities due to the variety and complexity of GLP-1 RA chemical structures.

Here, we screen four column chemistries for the RPLC-UV analysis of two fatty acid modified GLP-1 RAs, liraglutide and semaglutide. We demonstrate that minor differences in the chemical structure of liraglutide and semaglutide strongly impact their reversed phase impurity separation and suggest that column selection for RPLC-UV impurity analysis of fatty acid modified GLP-1 RAs should be specifically tailored to the analyte of interest. The presented methodology aims to provide additional direction and analyte-specific tailoring for the development of RPLC-TUV methods for fatty acid modified GLP-1 RAs. Additionally, we show that the reported method enables MS identification of impurities with abundances as low as 0.1% despite ion suppression from TFA.

---

## Experimental

### Sample Description

Liraglutide (research grade, AA Blocks lot no. 2885387) was reconstituted at 6 mg/mL in a 3 mM disodium phosphate buffer containing 20 mM phenol and diluted to 0.5 mg/mL with water prior to injection. Semaglutide (Ozempic®) was analyzed past expiry and diluted to 0.5 mg/mL with water prior to injection.

### Method Conditions

---

LC system:	ACQUITY™ UPLC™ I-Class PLUS
Columns:	CORTECS™ Premier C <sub>18</sub> +, 1.6 μm, 2.1 x 150 mm (p/n: 186010429)
	CORTECS Premier C <sub>18</sub> +, 2.7 μm, 2.1 x 150 mm (p/n: 186010457)
	ACQUITY Premier Peptide CSH™ C <sub>18</sub> , 130 Å, 1.7 μm, 2.1 x 150 mm (p/n: 186009489)
	ACQUITY Premier CSH Phenyl-Hexyl, 1.7 μm, 2.1 x 150 mm (p/n: 186009476)
	ACQUITY Premier BEH™ C <sub>8</sub> , 1.7 μm, 2.1 x 150 mm (p/n: 186010358)
Column temperature:	60 °C
Sample temperature:	6 °C
Injection volume:	6 μL
Mobile phase A:	0.1% TFA in H <sub>2</sub> O
Mobile phase B:	0.1% TFA in ACN

## Gradient Table

Time (min)	Flow (mL/min)	%A	%B	Curve
Initial	0.2	95	5	Initial
1	0.2	65	35	6
46	0.2	35	65	6
56	0.2	5	95	6
60	0.2	95	5	6
61	0.2	95	5	6

## RDa Detector Settings

Mass range:	50–2000 <i>m/z</i>
Mode:	ESI+ Full Scan
Sample rate:	1 Hz
Capillary voltage:	1.2 kV
Cone voltage:	20 V
Desolvation temperature:	350 °C
Data management:	waters_connect™

---

## Results and Discussion

### Method Considerations and Column Selection

Liraglutide and semaglutide are highly retentive analytes under reversed phase conditions; columns with low

---

retentivity were therefore evaluated for this work. The selected columns are listed in Table 1. Each column is packed in High Performance Surface Technology hardware (*i.e.* MaxPeak™ Premier) to reduce unwanted analyte/surface interactions. A single method was used to assess each column to simplify column-to-column comparison. TFA, a strong acid and ion-pairing reagent, was selected as the mobile phase additive due to its baseline noise and peak capacity advantages. Finally, a shallow gradient (1.1%/CV for fully porous columns and 1.7%/CV for solid core columns, CV=column volume) was used to achieve high resolution of structurally similar impurities.

Column	Pore size (Å)	Particle size (µm)	Particle type	Ligand
CORTECS Premier C <sub>18+</sub>	90	1.6	Charged surface silica, solid core	C <sub>18</sub>
CORTECS Premier C <sub>18+</sub>	90	2.7	Charged surface silica, solid core	C <sub>18</sub>
ACQUITY Premier Peptide CSH C <sub>18</sub>	130	1.7	Charged surface hybrid	C <sub>18</sub>
ACQUITY Premier CSH Phenyl-Hexyl	130	1.7	Charged surface hybrid	Phenyl-hexyl
ACQUITY Premier BEH C <sub>8</sub>	130	1.7	Hybrid	C <sub>8</sub>

## Liraglutide and Semaglutide Separation

Figures 1 and 2 show the chromatographic results for liraglutide and semaglutide on the four selected columns. Peaks are labelled to highlight selectivity and resolution differences across the four columns and their mass shifts relative to the parent peak ( $\Delta$  Mass) are shown in the tables on the right. Co-eluting species are marked with an asterisk. In Figure 1, peaks labelled “B” are isomers of liraglutide and in Figure 2, peaks labelled “D” are isomers of semaglutide.

Under these method conditions, the CORTECS Premier C<sub>18+</sub> and the ACQUITY Premier Peptide CSH C<sub>18</sub> columns isolate the most unique variants of liraglutide whereas the CORTECS Premier C<sub>18+</sub> and the ACQUITY Premier CSH Phenyl-Hexyl columns isolate the most unique variants of semaglutide. The ACQUITY Premier Peptide CSH C<sub>18</sub> Column yields better separation for liraglutide than semaglutide whereas the ACQUITY Premier CSH Phenyl-Hexyl Column yields better separation for semaglutide than liraglutide. While the ACQUITY Premier BEH C<sub>8</sub> Column is not a top performer for either analyte, it effectively separates more variants of semaglutide than those of liraglutide.

These data demonstrate that minor differences in the chemical structure of fatty acid modified GLP-1 RAs impact column selection. Both liraglutide and semaglutide consist of modified human GLP-1 appended with a fatty acid chain. However, liraglutide contains a C-16 fatty acid linked through a glutamic acid spacer while semaglutide contains a C-18 fatty acid linked through a hydrophilic bis-aminodiethoxyacetyl spacer.<sup>3</sup> These differences in

fatty acid chain length and spacer chemistry significantly impact the impurity separation on each of the studied columns. Column selection for RPLC-UV impurity analysis of fatty acid GLP-1 RAs therefore needs to be tailored to the specific analyte of interest. Regardless, the reported method and selected columns can be used as a starting point for analysts seeking a RPLC-UV method for impurity analysis of fatty acid modified GLP-1 RAs.

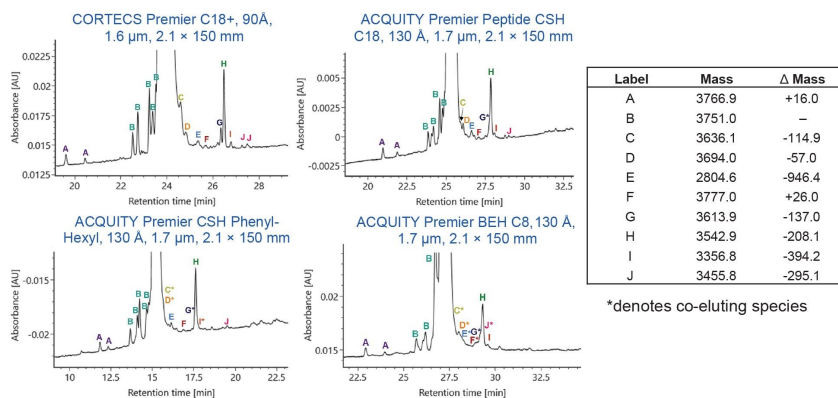


Figure 1. Comparison of RPLC-UV results for liraglutide on four column chemistries. Peak masses and mass shifts relative to liraglutide ( $\Delta$  Mass) are shown on the right.

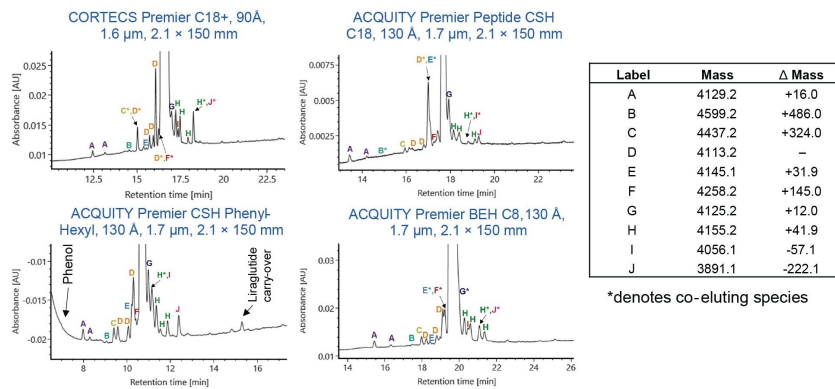


Figure 2. Comparison of RPLC-UV results for semaglutide on four column chemistries. Peak masses and mass shifts relative to semaglutide ( $\Delta$  Mass) are shown on the right. On the ACQUITY Premier CSH Phenyl-Hexyl column, early eluting semaglutide variants coelute with phenol, a formulation component of Ozempic.

The CORTECS Premier C<sub>18</sub>+, 2.7  $\mu$ m, 2.1 x 150 mm Column was also tested to evaluate the effect of particle size on liraglutide and semaglutide impurity separation. Figure 3 shows the chromatographic results for liraglutide and semaglutide on the CORTECS Premier C<sub>18</sub>+ 1.6  $\mu$ m and 2.7  $\mu$ m columns. Using the same gradient conditions and column size, a predicted loss of resolution and impurity detail is observed. However, a reasonable separation is still achieved using the 2.7  $\mu$ m particle, demonstrating potential scalability of the method from UPLC to UHPLC/HPLC. A longer 4.6 x 300 mm CORTECS Premier C<sub>18</sub>+ 2.7  $\mu$ m Column could be employed if additional resolution is required.

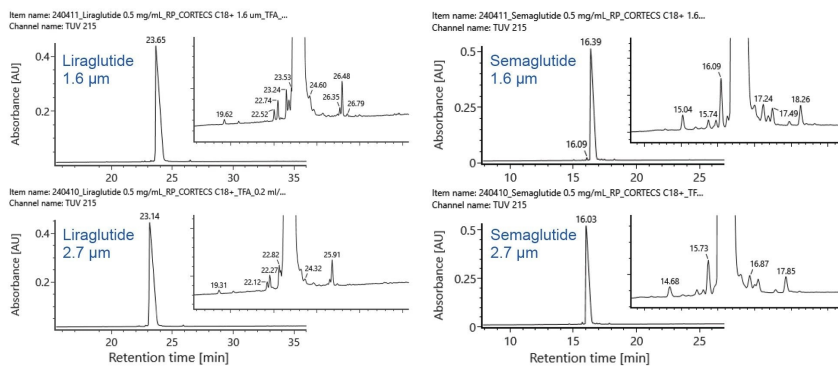


Figure 3. Comparison of RPLC-UV results for liraglutide and semaglutide on the CORTECS Premier C<sub>18</sub>+ 1.6 μm and 2.7 μm columns.

## Gradient Optimization for Semaglutide Separation

The column comparison data shown above used a single gradient for all columns and analytes to simplify column-to-column comparison. The gradient for semaglutide separation on the ACQUITY Premier CSH Phenyl-Hexyl Column was optimized to improve separation of impurities and eliminate interference with phenol. The RPLC-UV chromatograms for semaglutide on the ACQUITY Premier CSH Phenyl-Hexyl Column using the GLP-1 RA screening gradient and an optimized gradient are shown in Figure 4. The optimized gradient improves the separation of semaglutide variants and reveals additional species that were not observed with the screening gradient. As highlighted in Figure 4, a new species at 24.6 minutes is seen with the optimized gradient.



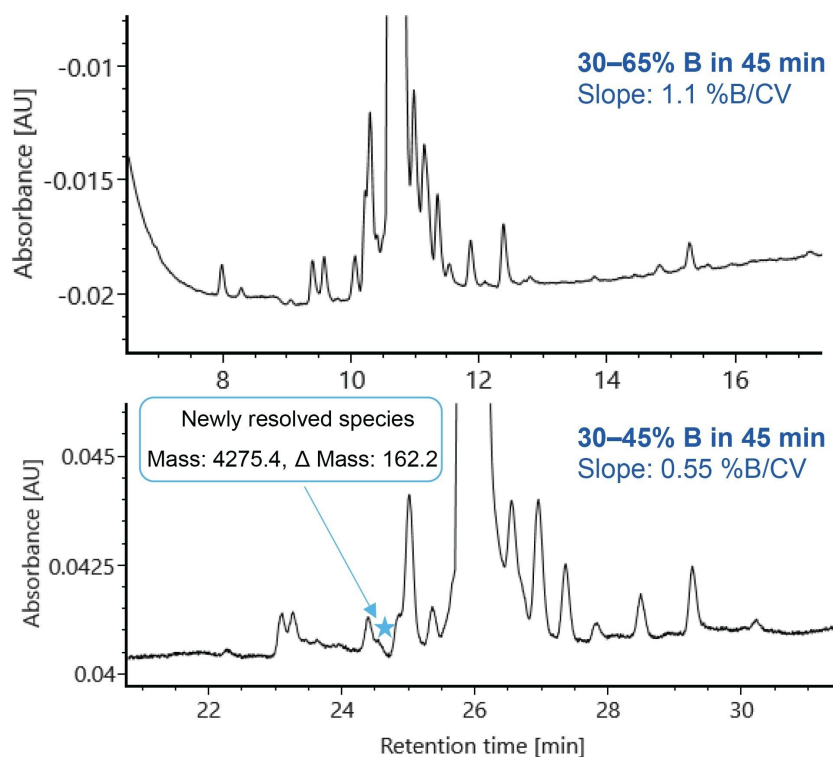


Figure 4. RPLC-UV chromatograms for semaglutide on the ACQUITY Premier CSH Phenyl-Hexyl Column using the GLP-1 RA screening gradient (top) and an optimized gradient (bottom). The optimized gradient improves the separation of semaglutide variants and reveals additional species that were not observed with the screening gradient.

## MS Compatibility

TFA was used as the mobile phase additive in these studies for its optical baseline noise and peak capacity advantages. TFA is typically avoided for MS detection because of its propensity to suppress ionization and contaminate MS systems.<sup>4</sup> Figure 5 shows the TIC and UV chromatograms of liraglutide on the ACQUITY Premier Peptide CSH C<sub>18</sub> Column (left) and the mass spectrum of the TIC peak at 21.02 min (right). The mass spectrum shown in Figure 5 correlates to a species with a mass of 3766.9 Da (mass shift relative to liraglutide: 16.0 Da, oxidized liraglutide). This data demonstrates that despite ion suppression from TFA, high-quality MS data can be obtained and peaks as low as 0.1% abundance relative to the main peak can be identified.



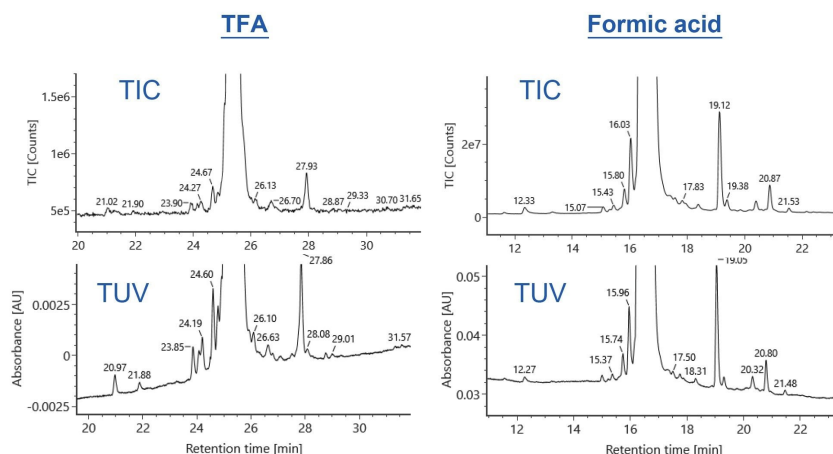


Figure 6. TIC and UV chromatogram of liraglutide on the ACQUITY Premier Peptide C<sub>18</sub> Column using 0.1% TFA or 0.1% formic acid mobile phase additives.

## Conclusion

The increased demand and use of GLP-1 RAs prompts a need for robust chromatographic methods to screen for impurities that may impact their safety and efficacy. Here, four column chemistries were screened for the RPLC-UV analysis of two fatty acid modified GLP-1 RAs, liraglutide and semaglutide. These studies show that no single column will provide optimal separation for all fatty acid modified GLP-1 RA constructs. Therefore, column screening should be considered when developing a RPLC-UV impurity analysis method for fatty acid modified GLP-1 RAs. The columns and chromatographic conditions presented here serve as additional direction for the development of RPLC-UV methods for fatty acid modified GLP-1 RAs. Moreover, we anticipate this methodology to be effective for the impurity analysis of non-GLP-1 RA lipopeptides.

## References

1. Watanabe, J.H., Kown, J., Nan, B., Reikes, A. Trends in Glucagon-like Peptide 1 Receptor Agonist use, 2014 to

2022. *Journal of the American Pharmacists Association*. 2024, 64, 133–138.

2. Clements, B.R., Rainville, P. Development of Separation Methods for GLP-1 Synthetic Peptides Utilizing a Systematic Protocol and MaxPeak™ High Performance Surface Technology. Application note. [720008267](#). Waters Corporation. 2024.
3. Knudsen, L. B., Lau, K. The Discovery and Development of Liraglutide and Semaglutide. *Frontiers in Endocrinology*. 2019, 10, 155.
4. Koza, S. M. Chambers, E. E. Selecting a Reversed-Phase Column for the Peptide Mapping Analysis of a Biotherapeutic Protein. Application note. [720005924](#). Waters Corporation. 2017.

---

## Featured Products

[ACQUITY UPLC I-Class PLUS System <](#)

<https://www.waters.com/nextgen/global/products/chromatography/chromatography-systems/acquity-uplc-i-class-plus-system.html>>

[waters\\_connect Software Solutions <https://www.waters.com/nextgen/global/products/informatics-and-software/waters\\_connect.html](#)>

720008509, September 2024



© 2024 Waters Corporation. All Rights Reserved.

[Conditions d'utilisation](#) [Politique de confidentialité](#) [Marques](#) [Carrières](#) [Mentions légales](#) et [déclaration de confidentialité](#) [Cookies](#) [Préférences de cookies](#)